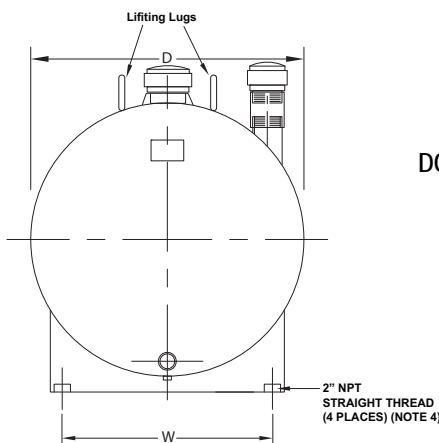


Fuel System - Double Wall Tank

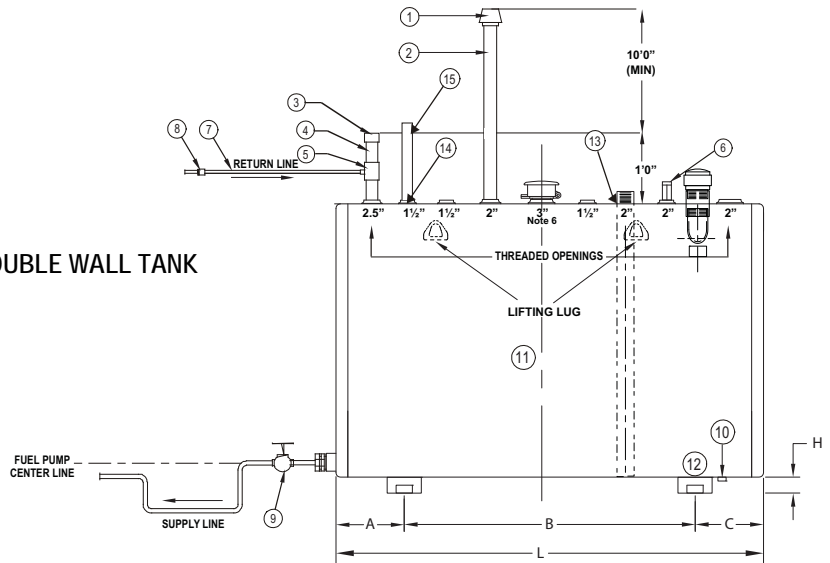
SUBMITTAL DRAWING

| | |
|--|---|
| JOB: _____ _____ _____ ENGINEER: _____ CONTRACTOR: _____ | REPRESENTATIVE: _____ _____ _____ ORDER NO: _____ DATE: _____ SUBMITTED BY: _____ DATE: _____ APPROVED BY: _____ DATE: _____ |
|--|---|

NOTE: As per NFPA20 2010 Section 11.4
 Labeled ULC-S601



DOUBLE WALL TANK



| Typical Tank Dimensions and Weights | | | | | | | | |
|-------------------------------------|-----------|-------------|-----------|-------------|-----------|-------------|------------|-----------|
| Volume USgal (L) | A | B | C | D | H | L | W | Weight |
| 150 (565) | 8.03(204) | 33.00(838) | 7.99(203) | 30.11(765) | 2.00(51) | 49.01(1245) | 22.00(562) | 435 (198) |
| 186 (705) | 8.03(204) | 45.00(1143) | 7.99(203) | 30.11(765) | 2.00(51) | 61.02(1550) | 22.00(562) | 497 (225) |
| 232 (878) | 9.25(235) | 30.47(774) | 9.25(235) | 37.99(965) | 4.01(102) | 49.01(1245) | 29.13(740) | 329 (149) |
| 286 (1085) | 9.25(235) | 42.52(1080) | 9.25(235) | 37.99(965) | 4.01(102) | 61.02(1550) | 29.13(740) | 641 (291) |
| 340 (1283) | 9.25(235) | 54.72(1390) | 9.25(235) | 37.99(965) | 4.01(102) | 73.23(1860) | 29.13(740) | 728 (330) |
| 550 (2083) | 9.25(235) | 54.72(1390) | 9.25(235) | 47.83(1215) | 4.01(102) | 73.23(1860) | 36.14(918) | 937 (425) |

| LIST OF MATERIALS | |
|-------------------|----------------------------------|
| Item | Description |
| 1 (M) | FLAME ARRESTER |
| 2 | VENT PIPE - 2" (51 mm) |
| 3 (M) | FILL CAP |
| 4 | FILL PIPE - 2.5" (64 mm) |
| 5 | REDUCER TEE - 2.5" x 2.5" x 1/2" |
| 6 (M) | LEVEL GAUGE |
| 7 | FUEL LINE |
| 8 (M) | CHECK VALVE |
| 9 (M) | MANUAL VALVE (NOTE 1) |
| 10 (M) | DRAIN PLUG - 1" NPT (NOTE 2) |
| 11 (M) | FUEL TANK |
| 12 (M) | TANK SUPPORT |
| 13 (M) | SECONDARY TANK INSPECTION |
| 14 (M) | TANK WHISTLE |
| 15 | 1/4" VENT PIPE |

All dimensions are in inches (mm) and weights in lbs. (kg).

(M) SUPPLIED BY PUMP MANUFACTURER

NOTES:

1. Manual valve must be locked open or central station supervised.
2. A 1" drain valve must be used instead of drain plug when not subject to freezing.
3. Tank size as per NFPA20 2010 Section 11.4.2.1.
4. 2" pipe leg supplied by others.
5. Diesel fuel supplied by others.
6. On the 340 USGAL and 550 USGAL tanks this becomes a 4" energy vent.

NOTE: DIMENSIONS ARE NOT USED FOR CONSTRUCTION PURPOSES UNLESS CERTIFIED. DATA SUBJECT TO CHANGE WITHOUT NOTICE.

S. A. Armstrong Limited
 23 Bertrand Avenue
 Toronto, Ontario
 Canada, M1L 2P3
 T: (416) 755-2291
 F (Main): (416) 759-9101

Armstrong Pumps Inc.
 93 East Avenue
 North Tonawanda, New York
 U.S.A. 14120-6594
 T: (716) 693-8813
 F: (716) 693-8970

Armstrong Integrated Limited
 Wenlock Way
 Manchester
 United Kingdom, M12 5JL
 T: +44 (0) 8444 145 145
 F: +44 (0) 8444 145 146

