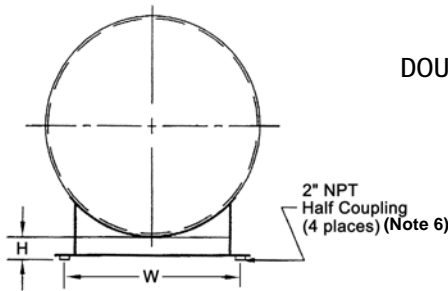


Fuel System - Double Wall Tank

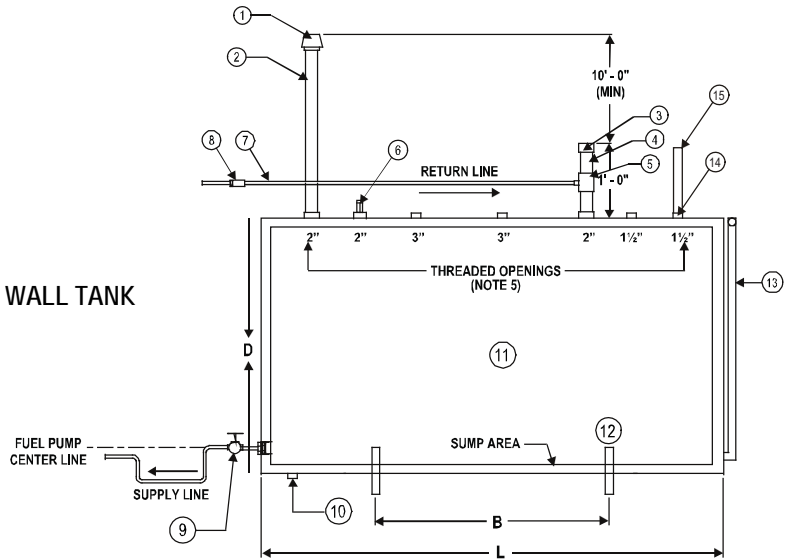
SUBMITTAL DRAWING

JOB: _____ _____ _____ ENGINEER: _____ CONTRACTOR: _____	REPRESENTATIVE: _____ _____ ORDER NO: _____ DATE: _____ SUBMITTED BY: _____ DATE: _____ APPROVED BY: _____ DATE: _____
--	--

NOTE: As per NFPA20 2007 Section 11.4



DOUBLE WALL TANK



TANK DIMENSIONS and WEIGHTS						
Volume	L	D	B	W	H	Weight
US Gal. (L)						
120 (455)	44.0 (1117)	28.00 (711)	24.00 (610)	26.75 (679)	4.75 (121)	430 (195.0)
180 (682)	60.00 (1524)	30.00 (762)	40.00 (1016)	27.25 (705)	4.75 (121)	540 (244.9)
240 (910)	49.00 (1244)	38.00 (965)	29.00 (737)	30.25 (768)	4.75 (121)	595 (269.9)
300 (1140)	61.00 (1549)	38.00 (965)	41.00 (1041)	30.25 (768)	4.75 (121)	690 (313.0)
350 (1330)	72.00 (1829)	38.00 (965)	52.00 (1321)	30.25 (768)	4.75 (121)	775 (351.5)
500 (1900)	72.00 (1829)	46.00 (1168)	52.00 (1321)	37.75 (959)	4.75 (121)	950 (430.9)

All dimensions are in inches (mm) and weights in lbs. (kg).

SUPPLIED BY PUMP MANUFACTURER

NOTES:

1. Manual valve must be locked open or central station supervised.
2. A 1" drain valve must be used instead of drain plug when not subject to freezing.
3. Tank size as per NFPA20 2007 Section 11.4.3.1.
4. Tank is designed, fabricated, tested and labeled per UL-142.
5. 500 gallon tank, 4" in place of 3".
6. 2" pipe leg and diesel fuel supplied by others.
7. Fuel supply located as per NFPA 20 11.4.5.3.

NOTE: DIMENSIONS ARE NOT USED FOR CONSTRUCTION PURPOSES UNLESS CERTIFIED.
 DATA SUBJECT TO CHANGE WITHOUT NOTICE.

LIST of MATERIALS	
Item	Description
1	FLAME ARRESTER
2	VENT PIPE - 2" (51 mm)
3	FILL CAP
4	FILL PIPE - 2" (51 mm)
5	REDUCER TEE - 2" x 2" x 1/2"
6	LEVEL GAUGE
7	FUEL LINE
8	CHECK VALVE
9	MANUAL VALVE (NOTE 1)
10	DRAIN PLUG - 1" NPT (NOTE 2)
11	FUEL TANK (NOTE 4)
12	TANK SUPPORT
13	MONITORING PIPE - 2" (51 mm)
14	TANK WHISTLE
15	1/4" VENT PIPE

S. A. Armstrong Limited
 23 Bertrand Avenue
 Toronto, Ontario
 Canada, M1L 2P3
 T: (416) 755-2291
 F (Main): (416) 759-9101

Armstrong Pumps Inc.
 93 East Avenue
 North Tonawanda, New York
 U.S.A. 14120-6594
 T: (716) 693-8813
 F: (716) 693-8970

Armstrong Holden Brooke Pullen
 Wenlock Way
 Manchester
 United Kingdom, M12 5JL
 T: +44 (0) 161 223 2223
 F: +44 (0) 161 220 9660

