

ANNULAR TYPE FLOW METER

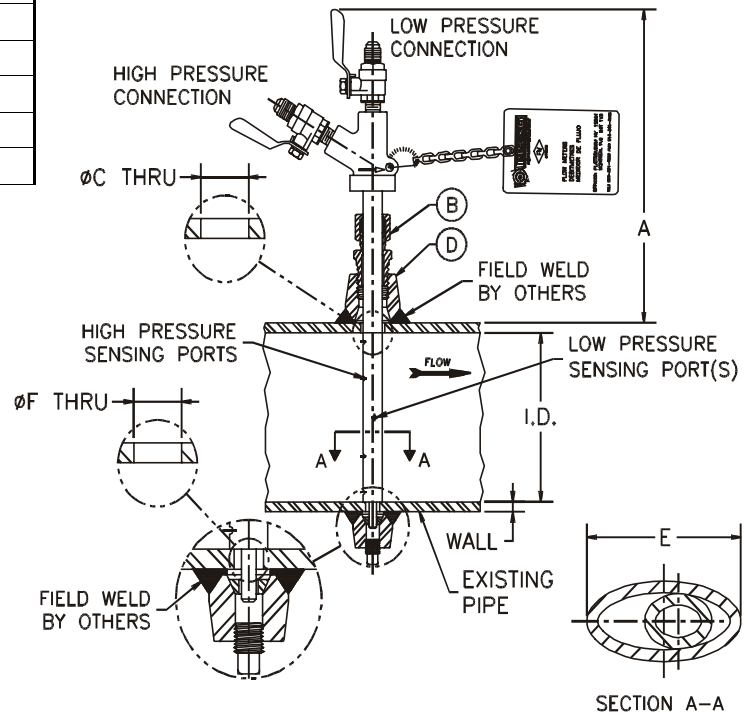
SUBMITTAL

JOB: _____ _____ _____ ENGINEER: _____ CONTRACTOR: _____	REPRESENTATIVE: _____ _____ _____ ORDER NO: _____ DATE: _____ SUBMITTED BY: _____ DATE: _____ APPROVED BY: _____ DATE: _____
--	---

DIMENSIONS IN INCHES (MM)										
QTY	FLOW USGPM	PIPE SIZE	A DIM. APPROX.	ITEM B	ØC DIM.	ITEM D	E DIM.	ØF DIM.	APPROX. WT.	
									lbs.	kgs.
		3"	7.5 (191)	½" (13)	5/8" (16)	½" (13)	½" (13)	3/8" (10)	3	1.4
		4"	7.5 (191)						3.5	1.6
		5"	7.5 (191)						4	1.8
		6"	9.63 (245)	1" (25)	1 1/8" (29)	1" (25)	7/8" (22)	½" (13)	4.5	2
		8"	9.63 (245)						4.5	2
		10"	9.63 (245)						5	2.3
		12"	9.63 (245)						5.5	2.5

FLOW METER CONSTRUCTION AND SPECIFICATIONS	
PROBE CONSTRUCTION	316 - SS ELLIPSE
HEAD CONNECTION	BRASS Y-TYPE 1/8" FNPT
VALVES	1/4" MSAE FLARE BRASS BALL
WELD FITTING	CS-3000#
COMPRESSION FITTING	BRASS
IDENTIFICATION TAG	POLYCARBONATE
TEMPERATURE RATING	250°F 120°C
PRESSURE RATING	250 PSIG 1725 KPA

ANNULAR FLOW METER DESIGN DATA		
FIRE PUMP RATING	USGPM	L/S



S.A. Armstrong Limited
 23 Bertrand Avenue
 Toronto, Ontario
 Canada, M1L 2P3
 Tel: (416) 755-2291
 Fax: (416) 759-9101
 Visit us at www.armstrongpumps.com

Armstrong Pumps Limited
 Peartree Road, Stanway
 Colchester, Essex
 United Kingdom, C03 5JX
 Tel: 01206-579491
 Fax: 01206-760532



Armstrong Pumps Inc.
 93 East Avenue
 Buffalo, New York
 U.S.A. 14120-6594
 Tel: (716) 693-8813
 Fax: (716) 693-8970

Armstrong Darling Inc.
 2200 Place Transcanadienne
 Montreal, Quebec
 Canada, H9P 2X5
 Tel: (514) 421-2424
 Fax: (514) 421-2436

