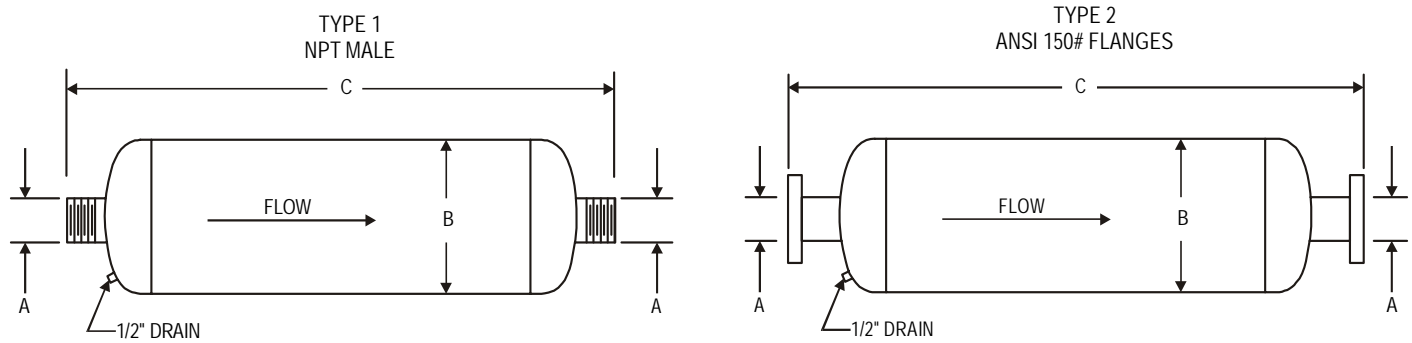


## Exhaust System

## SUBMITTAL DRAWING

JOB: _____ _____ _____ ENGINEER: _____ CONTRACTOR: _____	REPRESENTATIVE: _____ _____ _____ ORDER NO: _____ DATE: _____ SUBMITTED BY: _____ DATE: _____ APPROVED BY: _____ DATE: _____
--	---



**NOTE:**  
 If pipe length between engine exhaust and silencer is more than 15 feet, silencer may need to be larger than indicated sizes. Refer to factory.

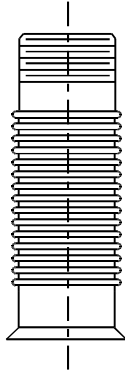
## SILENCERS

MANUFACTURER	ENGINE MODEL	CONNECTION SIZE	TYPE	A	B	C
<b>CLARKE</b>	JU4H-UF10, 12, 14, 20, 22, 24	3" NPT	1	3.0 (76)	10.1 (257)	44.0 (1118)
	JU4H-UF30, 32, 34, H0, H2, H8, 40, 42, 50, 52, 58	4" Flanged (150#)	2	4.0 (102)	10.1 (257)	55.0 (1397)
	JU4H-UF54	5" Flanged (150#)	2	5.0 (127)	14.1 (358)	51.4 (1306)
	JU6H-UF8, M8, 58	4" Flanged (150#)	2	4.0 (102)	10.1 (257)	55.0 (1397)
	JU6H-UF0, D2, 30, 32, 34, M0, M2, 50, 52, 54, 60, 62, 68	5" Flanged (150#)	2	5.0 (127)	10.1 (257)	51.4 (1306)
	JU6H-UF84	6" Flanged (150#)	2	6.0 (152)	14.1 (358)	65.4 (1661)
	JW6H-UF38	5" Flanged (150#)	2	5.0 (127)	14.1 (358)	51.4 (1306)
	JW6H-UF30, 40, 50, 60	6" Flanged (150#)	2	6.0 (152)	10.1 (257)	65.4 (1661)
	JX6H-UF30, 40	6" Flanged (150#)	2	6.0 (152)	10.1 (257)	65.4 (1661)
	JX6H-UF50, 60, 70	8" Flanged (150#)	2	8.0 (203)	10.1 (257)	64.0 (1626)
<b>CUMMINS</b>	CFP33-F10, 20, 30	3" Flanged (150#)	1	3.0 (76)	10.1 (257)	44.0 (1118)
	CFP59-F10	3" Flanged (150#)	1	3.0 (76)	10.1 (257)	44.0 (1118)
	CFP39-F15	4" Flanged (150#)	2	4.0 (102)	10.1 (257)	55.0 (1397)
	CFP59-F15, 20, 25, 40, 45, 50	4" Flanged (150#)	2	4.0 (102)	10.1 (257)	55.0 (1397)
	CFP83-F10	4" Flanged (150#)	2	4.0 (102)	10.1 (257)	55.0 (1397)
	CFP83-F20, 30, 40	5" Flanged (150#)	2	5.0 (127)	14.1 (358)	51.4 (1306)
	CFP6E-F15, 25, 35	5" Flanged (150#)	2	5.0 (127)	14.1 (358)	51.4 (1306)
	CFP11E-F10, 20	6" Flanged (150#)	2	6.0 (152)	10.1 (257)	65.4 (1661)

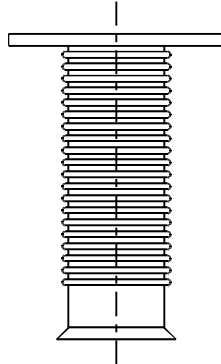
**NOTE:** All dimensions are in inches (mm).  
 Dimensions are not used for construction purposes unless certified.  
 Data subject to change without notice.

# SUBMITTAL DRAWING

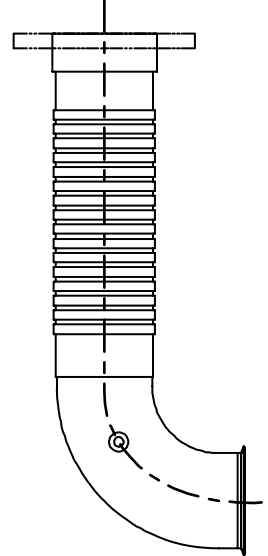
**TYPE NE**  
MALE NPT x 42°  
FLARED LIP



**TYPE FE**  
ANSI 150#  
FLANGE 42° or 20°  
FLARED LIP



**TYPE FC**  
ANSI 150#  
FLANGE



## FLEXIBLE EXHAUST CONNECTORS (As required per NFPA-20 2003 Section 11.5.3.1.)

MANUFACTURER	ENGINE MODEL	CONNECTION SIZE	TYPE
CLARKE*	JU4H-UF10, 12, 14, 20, 22, 24	3" NPT	NE
	JU4H-UF30, 32, 34, H0, H2, H8, 40, 42, 50, 52, 58	4" Flanged (150#)	FE
	JU4H-UF54	5" Flanged (150#)	FE
	JU6H-UFG8, M8, 58	4" Flanged (150#)	FE
	JU6H-UFD0, D2, 30, 32, 34, M0, M2, 50, 52, 54, 60, 62, 68	5" Flanged (150#)	FE
	JU6H-UF84	6" Flanged (150#)	FE
	JW6H-UF38	5" Flanged (150#)	FE
	JW6H-UF30, 40, 50, 60	6" Flanged (150#)	FE
	JX6H-UF30, 40	6" Flanged (150#)	FE
	JX6H-UF50, 60, 70	8" Flanged (150#)	FE
CUMMINS	CFP33-F10, 20, 30	3" Flanged (150#)	FC
	CFP39-F15	3" Flanged (150#)	FC
	CFP59-F10, 15, 20, 25, 40, 45, 50	3" Flanged (150#)	FC
	CFP83-F10, 20, 30, 40	4" Flanged (150#)	FC
	CFP6E-F15, 25, 35	3" Flanged (150#)	FC
	CFP11E-F10, 20	5" Flanged (150#)	FC

NOTE: \*All Flexible Connectors are 18" (457 mm) in length.

S. A. Armstrong Limited  
23 Bertrand Avenue  
Toronto, Ontario  
Canada, M1L 2P3  
T: (416) 755-2291  
F (Main): (416) 759-9101

Armstrong Pumps Inc.  
93 East Avenue  
North Tonawanda, New York  
U.S.A. 14120-6594  
T: (716) 693-8813  
F: (716) 693-8970

Armstrong Holden Brooke Pullen  
Wenlock Way  
Manchester  
United Kingdom, M12 5JL  
T: +44 (0) 161 223 2223  
F: +44 (0) 161 220 9660



© S.A. Armstrong Limited 2006

For Armstrong locations worldwide, please visit [www.armstrongpumps.com](http://www.armstrongpumps.com)