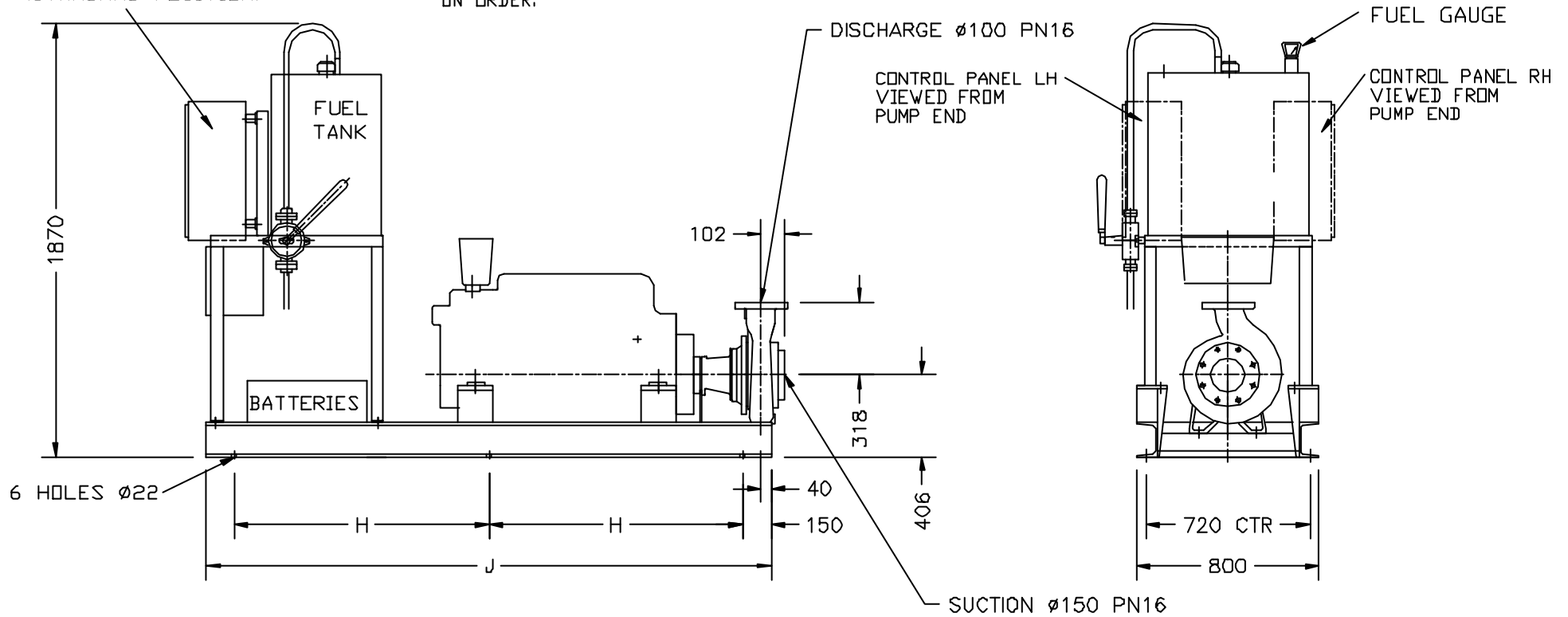


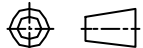
NOTE
CONTROL PANEL CAN BE MOUNTED ON
EITHER SIDE AS ALTERNATIVE TO
STANDARD POSITION IF SPECIFIED
ON ORDER.



MODEL No.	DRIVER	GRP.No.	H	J	WT(kg)
6x4x10DLCAC61	4B3.9P	-501	1018	2336	950
6x4x10DLCAC79	4BT3.9P	-511	1018	2336	962
6x4x10DLCAC94	4BTA3.9P	-521	1018	2336	971
6x4x10DLCAC119	6BT5.9P	-531	1153	2606	1036

CUMMINGS

Third Angle Projection



All dimensions in millimetres
unless otherwise stated

Tolerances
(general)

Linear ± 0.5
Angular $\pm 0.5^\circ$

SCALE
NTS

DATE
31JUL95

DETAIL NAME
02938-2

© ARMSTRONG PUMPS LIMITED
This drawing is not to be used for general
production unless with an original (red)

CONTROLLED
COPY

except when production order
specifies drawing no. & revision letter.

Material

Structural sections to BS4 part 1
Hollow sections to BS4B48 part 2

F			
E			
D			
C			
B			
A	2579	24AUG95	
REV	ECD No	DATE	SIGN

ARMSTRONG PUMPS LTD

COLCHESTER ESSEX UK

TITLE
DIESEL FIRE PUMP
6x4x10 EXTRA HIGH HAZARD

DRAWING NUMBER
UKD02938 Sht 2 of 3

A3

DRAWN
DCA