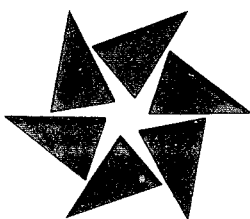
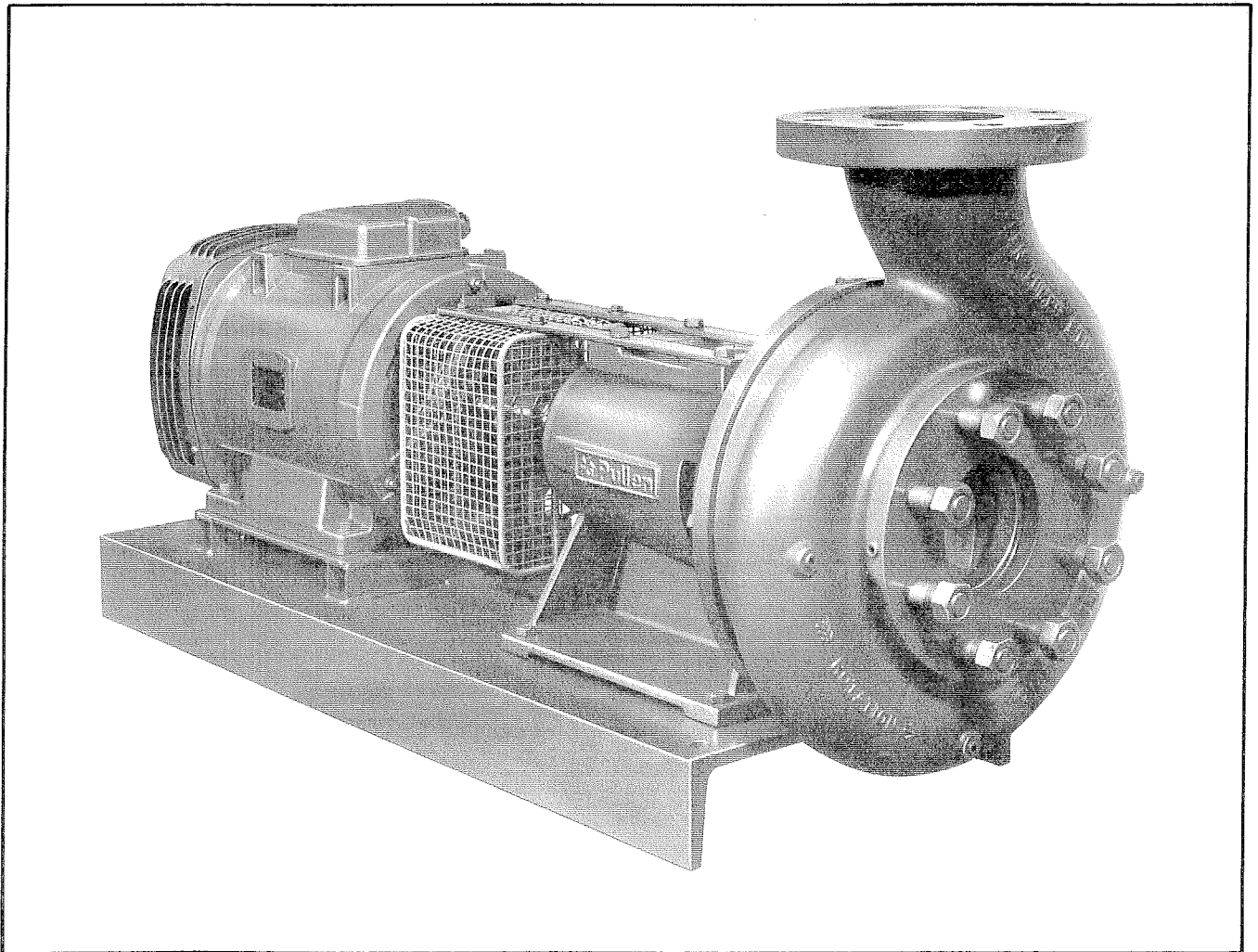


C Range Pumps Direct Drive



For Hot and Cold Water Applications

C Range – The Quality Direct-Driven Pump

Wide range of applications

Suitable for boosting and circulating applications, using cold or hot water. Standard pumps will handle water at temperatures up to 125°C and system pressures of 8, 10 or 16 bar depending on the size of pump.

High-rise buildings and high temperature systems are catered for by high-pressure and high-temperature versions, suitable for system pressures up to 21 bar and working temperatures up to 160°C, without the need for water cooling.

Exceptional Reliability

C Range pumps have been designed to reduce the impeller overhang. This results in improved bearing and seal life as the shaft deflection and bearing loads are reduced to a minimum, thereby taking full advantage of the heavy-duty ball bearings and robust shaft fitted as standard. Operating within the normal capacity range of each pump, the calculated B10 bearing life exceeds 30,000 hours.

Mechanical seal performance has been further improved by a special design of seal housing, unique to the Pullen C range, which improves seal interface lubrication.

Standardised Shaft Systems

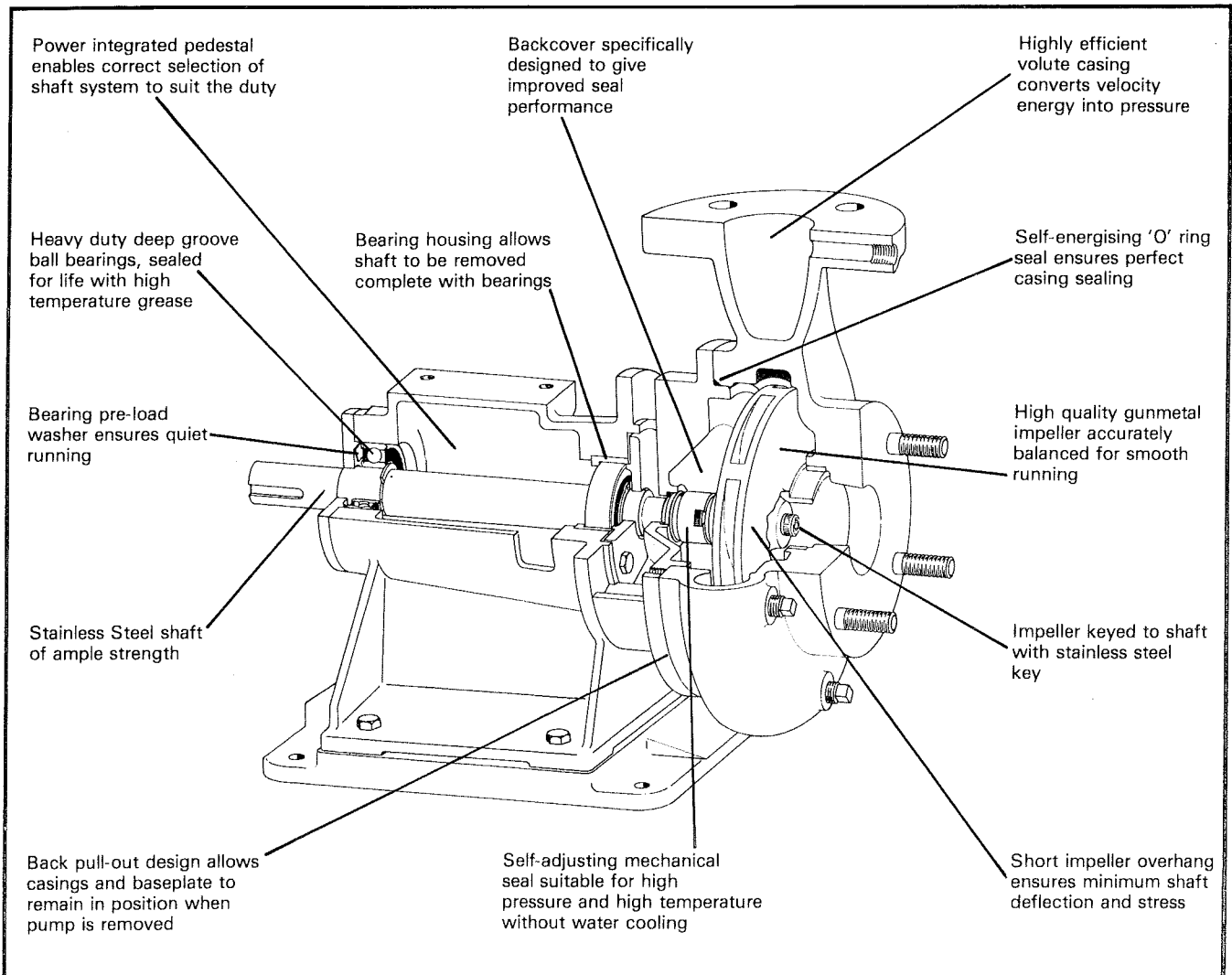
The entire range has been built around six standardised power integrated pedestals, thereby enabling customers to maintain stocks of spares at an absolute minimum.

The concept of 'Power integrated pedestals', unique to the Pullen C Range, enables the pump to be fitted to the most suitable pedestal for the power requirement, thereby ensuring that no pump is ever stretched to its performance limit, or conversely oversized.

Simplified Maintenance

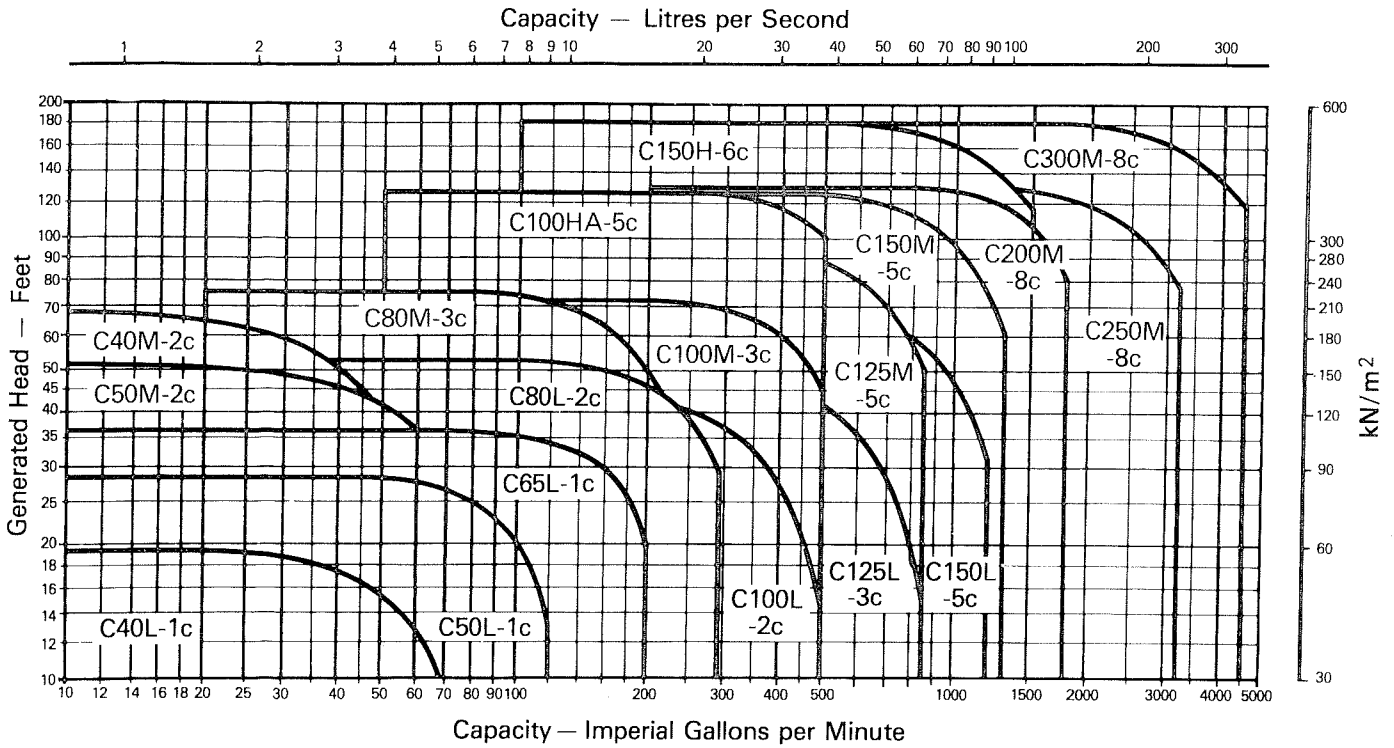
All C pumps require the minimum of routine maintenance featuring the ease with which they can be stripped and reassembled when necessary.

Pumps are of the well tried back pull-out design which leaves the casing connected to the pipework and the subframe grouted to the base. Mechanical seals can be changed without stripping down the bearing system, simply by removing the impeller. A novel bearing housing around the non-drive-end bearing, allows the shaft, complete with bearings, to pass through the pedestal, so that a new standardised shaft system can be inserted into the pedestal with the minimum of downtime. The old shaft system can be easily reconditioned by replacing the bearings and used subsequently as a spare.

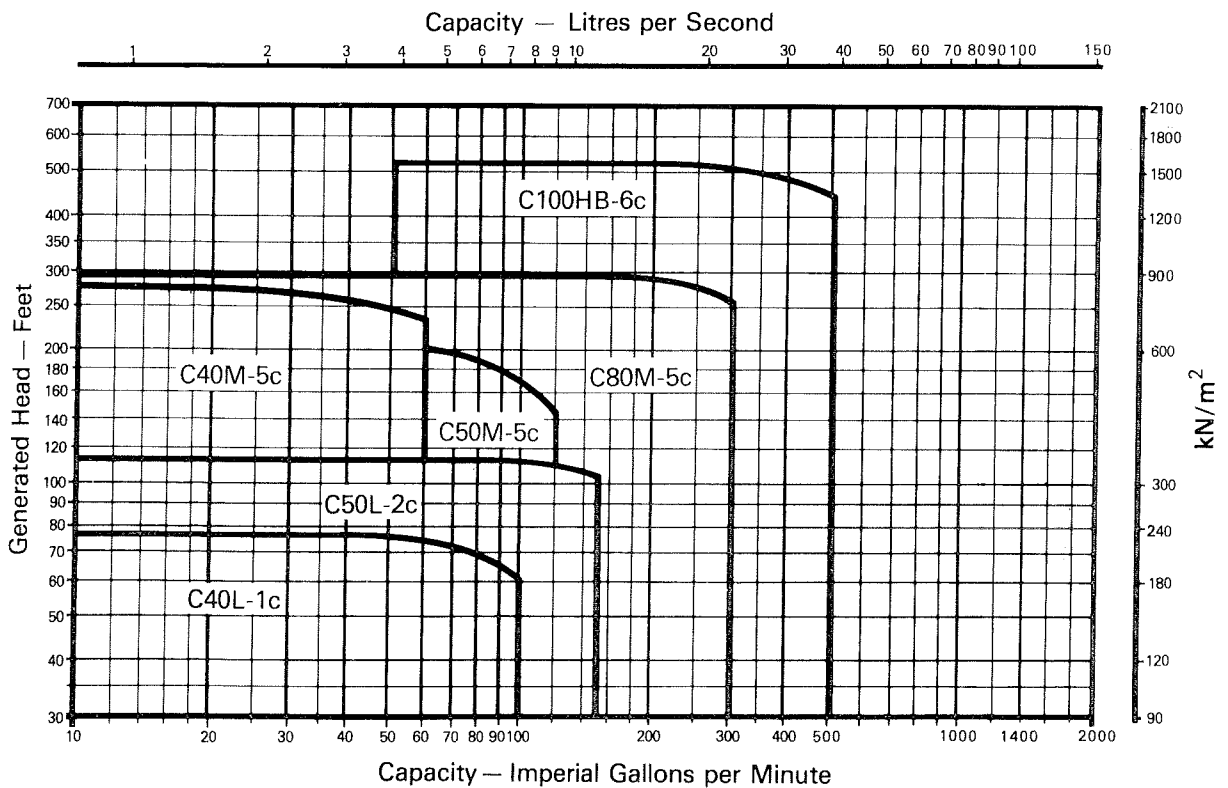


Performance Characteristics at 50 Hz

1450 rpm



2900 rpm



Material Specifications

Casing and Backcover

Manufactured from close-grained cast iron to BS1452 Grade 220, machined to fine limits.

Impeller

High-grade gunmetal (bronze) to BS1400 Grade LG2-C dynamically balanced and runs in renewable phosphor-bronze sealing rings.

Also available in close-grained cast iron to BS1452 Grade 220.

Impeller Key and Screw

Stainless steel, for resistance to corrosion.

Mechanical Seal

All C Range pumps are fitted with seals of the flexible bellows type, having carbon running against a stationary ceramic seat.

Motor Support and Baseplate

Heavy-duty mild steel channel.

Motors

TEFC (IP54) or drip-proof (IP22) squirrel-cage type to metric BS requirements, with windings insulated to class F.

Pump Shaft

High-grade stainless steel to BS970 Grade 431S29, ground to fine limits.

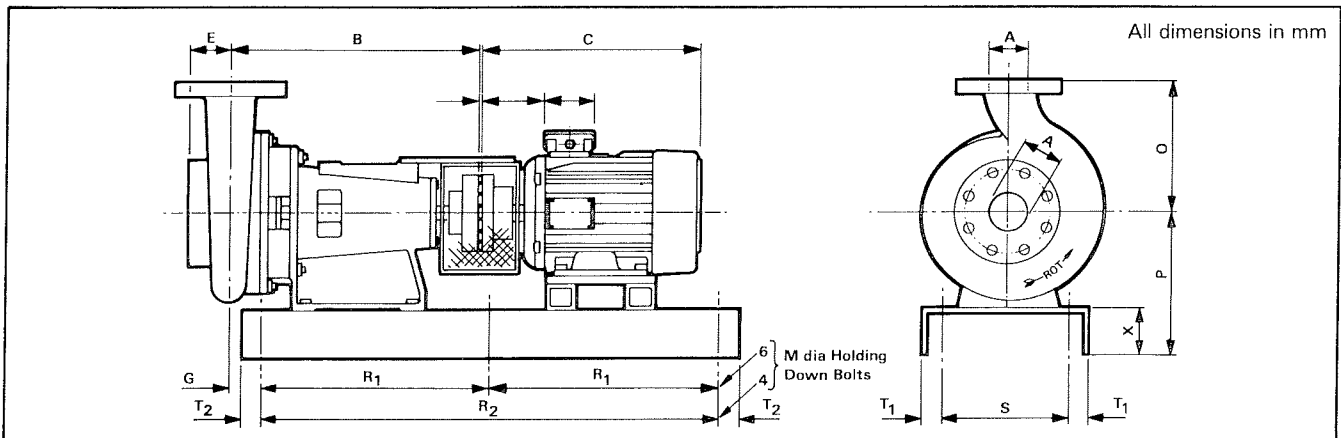
Bearings

Heavy-duty ball bearings, sealed-for-life, sized to transmit the highest loads, and pre-packed with high-temperature grease.

Tests

All pumps are fully tested before they leave our works to ensure perfect running. Performance characteristics are guaranteed in accordance with BS5316 Part 1.

Dimensions



| Pump | Pedestal | A | B | C* | E | G | M | O | P | R ₁ * | R ₂ * | S | T ₁ | T ₂ | X | Max. Working Pressure (bar) |
|--------|----------|-----|-----|------|-----|-----|----|-----|-----|------------------|------------------|-----|----------------|----------------|-----|-----------------------------|
| C40L | 1c | 40 | 353 | 339 | 60 | 106 | 16 | 160 | 186 | — | 560 | 184 | 20 | 35 | 76 | 8 |
| C50L | 1c | 50 | 353 | 339 | 60 | 106 | 16 | 190 | 198 | — | 560 | 184 | 20 | 35 | 76 | 8 |
| C50L | 2c | 50 | 393 | 458 | 60 | 93 | 16 | 190 | 249 | — | 650 | 184 | 20 | 35 | 89 | 8 |
| C65L | 1c | 65 | 352 | 371 | 65 | 105 | 16 | 220 | 198 | — | 560 | 184 | 20 | 35 | 76 | 8 |
| C80L | 2c | 80 | 385 | 377 | 75 | 85 | 16 | 250 | 249 | — | 650 | 184 | 20 | 35 | 89 | 8 |
| C80L§ | 3c | 80 | 472 | 458 | 75 | 97 | 16 | 250 | 287 | — | 780 | 235 | 20 | 35 | 102 | 8 |
| C100L | 2c | 100 | 390 | 377 | 80 | 90 | 16 | 270 | 249 | — | 650 | 184 | 20 | 35 | 89 | 8 |
| C100L§ | 3c | 100 | 477 | 458 | 80 | 102 | 16 | 270 | 287 | — | 780 | 235 | 20 | 35 | 102 | 8 |
| C125L | 3c | 125 | 482 | 458 | 95 | 107 | 16 | 310 | 287 | — | 780 | 235 | 20 | 35 | 102 | 8 |
| C150L | 5c | 150 | 537 | 605 | 100 | 115 | 16 | 360 | 307 | — | 1050 | 362 | 20 | 35 | 102 | 8 |
| C40M | 2c | 40 | 397 | 371 | 55 | 65 | 16 | 230 | 274 | — | 650 | 184 | 20 | 35 | 89 | 10 |
| C40M | 5c | 40 | 548 | 458 | 55 | 126 | 16 | 230 | 307 | — | 830 | 362 | 20 | 35 | 102 | 10 |
| C50M | 2c | 50 | 399 | 371 | 55 | 99 | 16 | 215 | 249 | — | 650 | 184 | 20 | 35 | 89 | 10 |
| C50M | 5c | 50 | 545 | 458 | 55 | 123 | 16 | 215 | 307 | — | 830 | 362 | 20 | 35 | 102 | 10 |
| C80M | 3c | 80 | 494 | 458 | 70 | 119 | 16 | 275 | 287 | — | 780 | 235 | 20 | 35 | 102 | 10 |
| C80M | 5c | 80 | 558 | 761 | 70 | 136 | 16 | 275 | 307 | — | 1050 | 362 | 20 | 35 | 102 | 10 |
| C100M | 3c | 100 | 469 | 458 | 80 | 94 | 16 | 300 | 287 | — | 780 | 235 | 20 | 35 | 102 | 8 |
| C125M | 5c | 125 | 535 | 671 | 80 | 113 | 16 | 360 | 307 | — | 1050 | 362 | 20 | 35 | 102 | 8 |
| C150M | 5c | 150 | 535 | 761 | 85 | 113 | 16 | 420 | 327 | — | 1050 | 362 | 20 | 35 | 102 | 8 |
| C150M§ | 6c | 150 | 710 | 1070 | 85 | 154 | 16 | 420 | 377 | 655 | — | 362 | 20 | 35 | 102 | 8 |
| C200M | 8c | 200 | 913 | 1230 | 140 | 178 | 20 | 457 | 482 | 730 | — | 690 | 31 | 100 | 12 | 10 |
| C250M | 8c | 250 | 925 | 1295 | 220 | 190 | 20 | 580 | 482 | 730 | — | 690 | 31 | 100 | 12 | 10 |
| C300M | 8c | 300 | 952 | 1390 | 250 | 217 | 20 | 600 | 482 | 830 | — | 690 | 31 | 100 | 12 | 10 |
| C100H | 5c | 100 | 550 | 671 | 80 | 128 | 16 | 380 | 327 | — | 1050 | 362 | 20 | 35 | 102 | 10 |
| C100H§ | 6c | 100 | 730 | 1170 | 80 | 174 | 16 | 380 | 377 | 655 | — | 362 | 20 | 35 | 102 | 16 |
| C150H | 6c | 150 | 715 | 1170 | 105 | 159 | 16 | 450 | 377 | 655 | — | 362 | 20 | 35 | 102 | 10 |

*These dimensions will vary depending on the size of motor fitted.

§Use this combination of pump and pedestal for 60Hz supply.

As we are constantly endeavouring to improve standards, we reserve the right to alter details given without prior notice.

Northern Regional Sales Office:
11 Eagle Brow
LYMM, Cheshire
Tel: 092 575 5201/2/3
Fax: 092 575 6653
Telex: 627956

58 Beddington Lane, Croydon, Surrey CR9 4PT, England
Telephone: 01-684 9521 Fax: 01-689 8892 Telex: 946597

MAY 88 SUPERSEDES