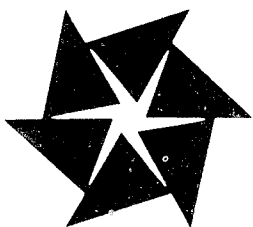
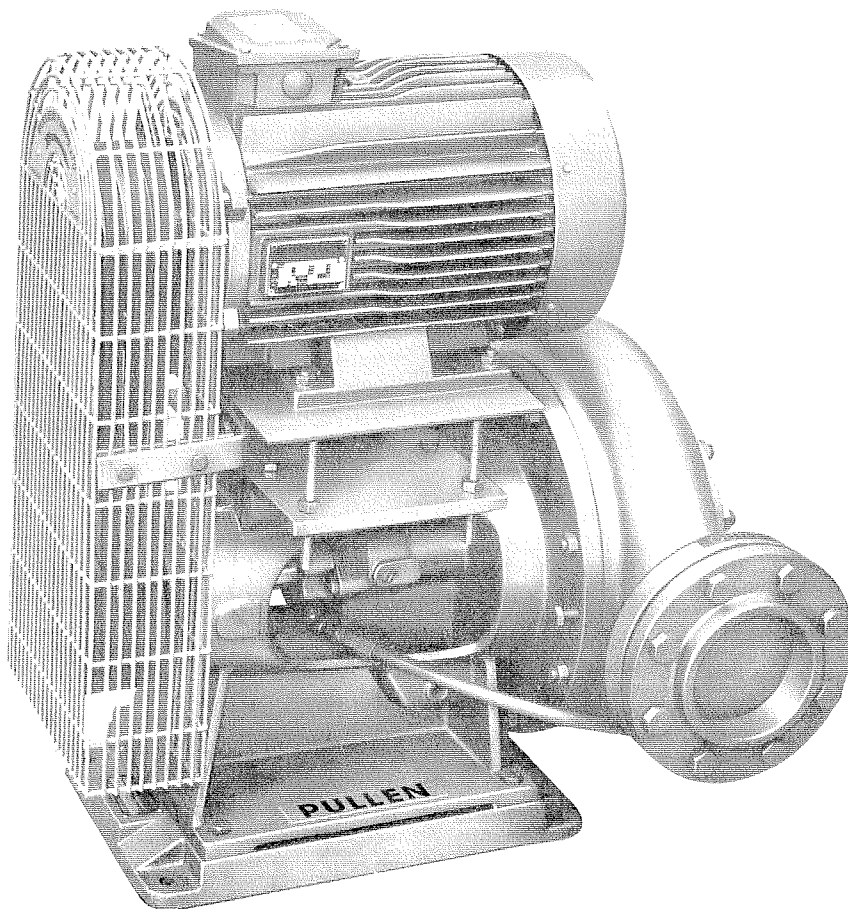


TB Centripul 'A' Range Pumps



**For Hot and Cold Water
Applications**

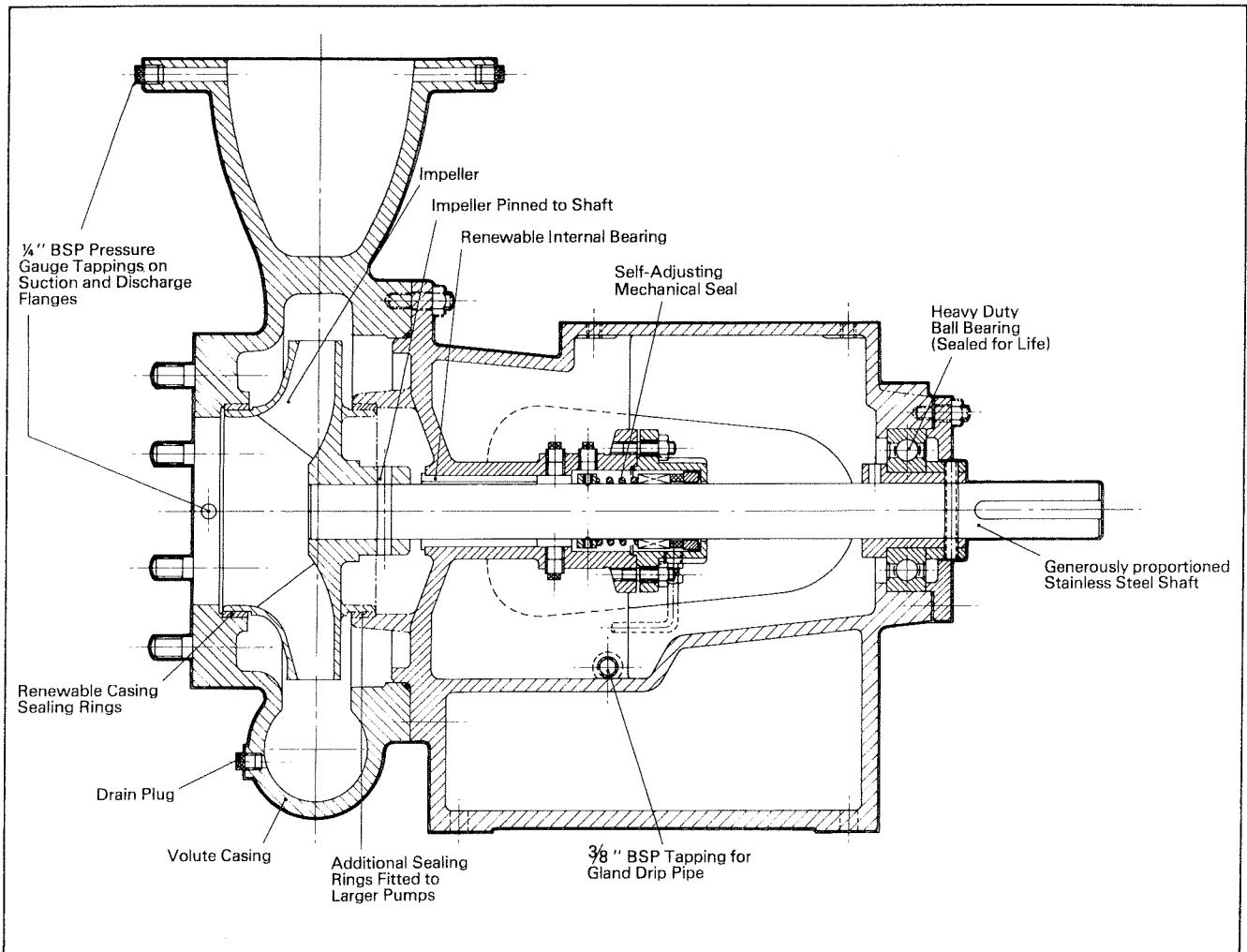
Centripul 'A' Range Centrifugal Pumps

The Pullen 'A' Range of Centrifugal Pumps are made to the highest possible standards of design, material and workmanship, all being hand fitted to ensure perfect running. Their aim is to give years of service yet maintain quietness of operation and desired performance.

These pumps are well suited for pumping cold or hot

water up to a temperature of 240°F (115°C) and are supplied as standard with mechanical seals. Packed gland versions are available on request. For temperatures of 240°F (115°C) to 340°F (170°C) see Leaflet No. B201M.

Packed glands must not be used in systems with varying pressures.



Material Specifications

Casing Pedestal and Baseplate

are manufactured from close-grained cast iron machined to fine limits.

Impeller

is cast in high grade gunmetal, accurately balanced and runs in renewable phosphor-bronze sealing rings.

Shaft

is of best quality stainless steel, of large diameter for extra strength, ground to fine limits.

Bearings

are heavy-duty ball-bearing externally, sealed-for-life, with additional phosphor-bronze sleeve bearing internally.

Pulleys

are of cast iron machined all over and keyed to the end of the shafts for easy removal.

Vee-Belts

have been carefully chosen to ensure maximum running life and are capable of transmitting a considerable margin over absorbed horsepower.

Rubber Anti-Vibration Mountings

can be fitted between the pump and motor where silent running is required.

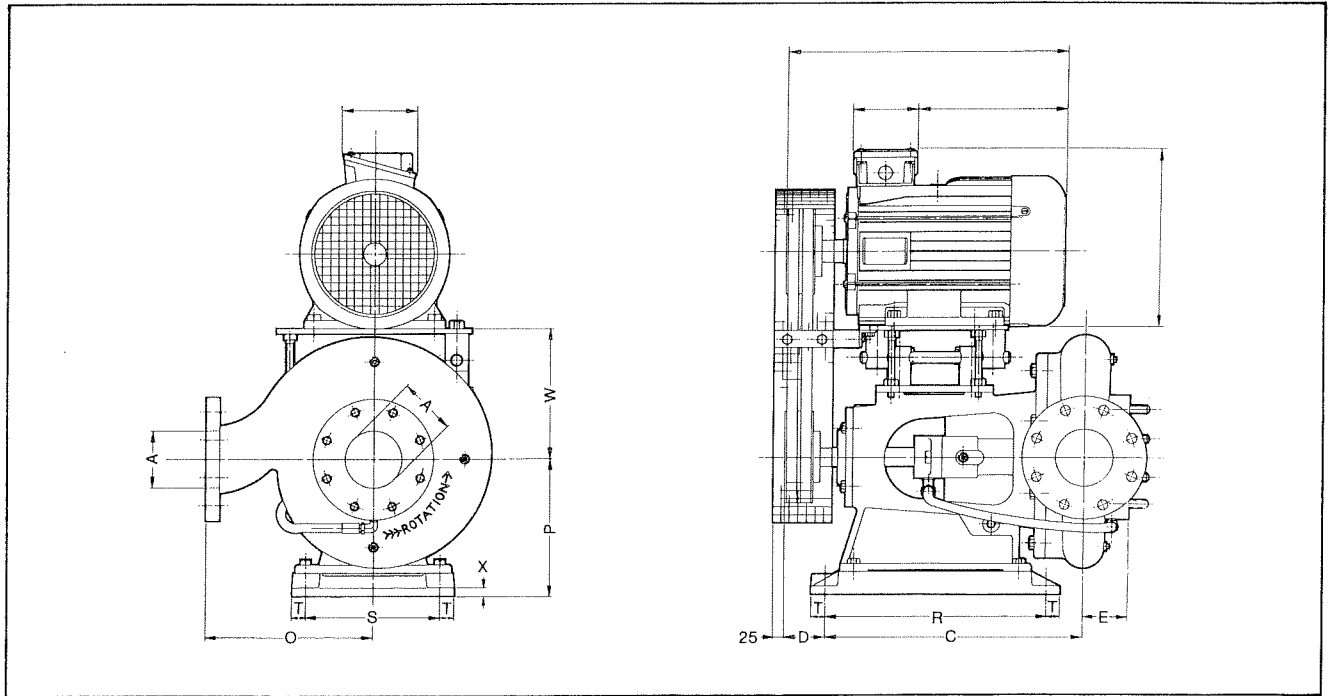
Mechanical Seals

are fitted to all pumps as standard. Packed glands versions are available on request.

Tests

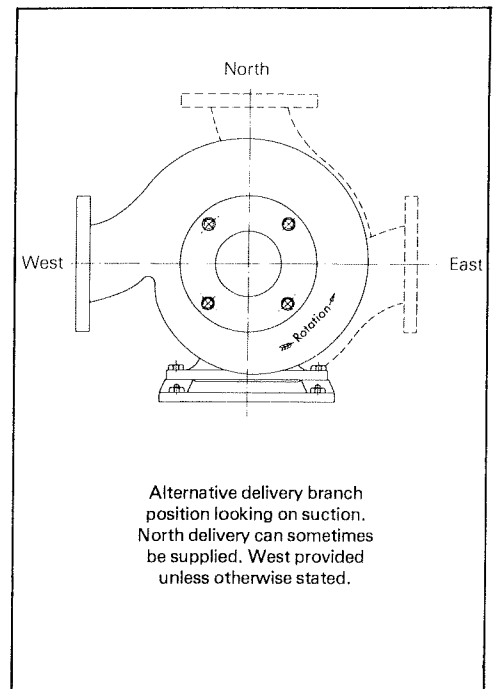
All pumps are fully tested before they leave our Works to ensure perfect running.

Dimensions



Pump	A	C	D	E	M	O	P	R	S	T	W	X
AL40	40	250	42	60	10	160	135	230	110	25	115	10
AL50	50	305	27	60	10	190	190	310	150	25	167	12
AL65	65	304	27	65	10	220	190	310	150	25	167	12
AL80	80	345	68	75	10	250	215	310	150	25	192	12
AL100	100	350	68	80	10	270	215	310	150	25	192	12
AL125	125	452	52	95	12	310	245	390	240	25	240	15
AL150	150	527	101	100	16	360	305	510	330	25	270	20
AM40	40	434	52	55	12	230	245	390	240	25	210	15
AM50	50	421	52	55	12	215	245	390	240	25	210	15
AM80	80	444	52	70	12	275	245	390	240	25	240	15
AM100	100	454	52	80	12	300	245	390	240	25	240	15
AM125	125	527	101	80	16	360	305	510	330	25	270	20
AH100	100	548	101	80	16	380	305	510	330	25	270	20

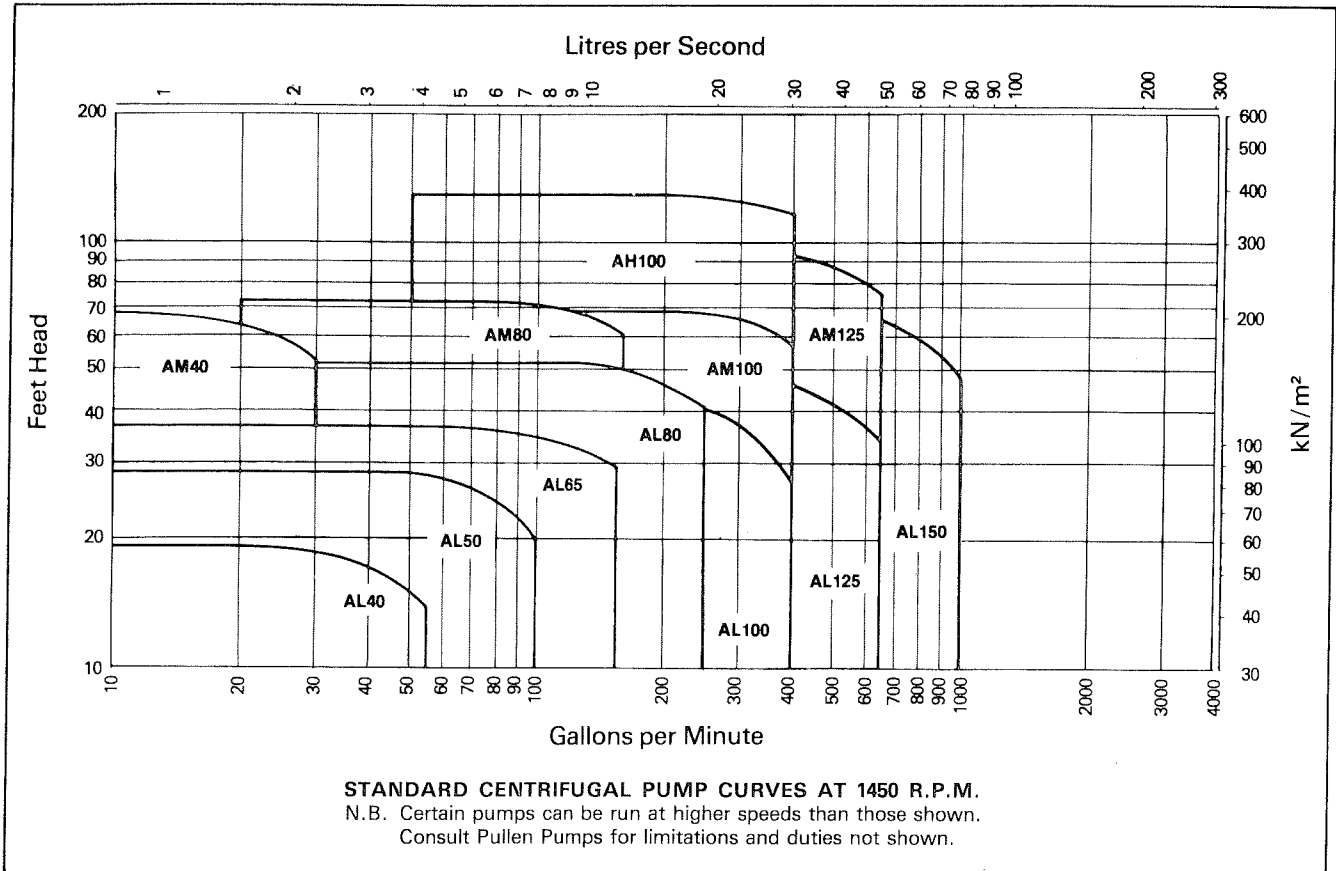
Dimensions in millimetres



Notes:

- 1 Inlet and outlet flanges to BS 4504/NP16 as standard. Other flanges can be supplied if required.
- 2 Use 'M' dia. holding down bolts.
- 3 $\frac{3}{8}$ " BSP tapping provided for drip pipe from pump gland.
- 4 Counterflanges are supplied as standard. Screwed flanges on pump sizes up to and including 80mm. Welding flanges on pump sizes 100mm and above.

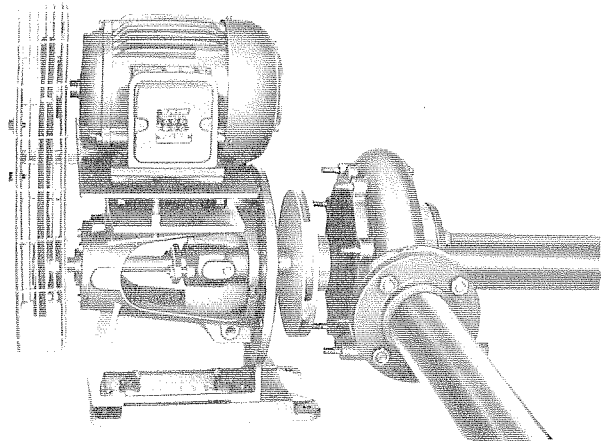
Performance Characteristics



Advantages

The great advantage of the Pullen TB Drive Pump which makes it so popular with heating engineers, is its capacity to handle additional loads not envisaged in the original design. By fitting a new Vee Rope drive the speed of the pump can be increased to give greater output. An increase in pump speed affects the horse-power absorbed. Should it be necessary to change the motor to obtain a very large increase in duty, this can be done quite economically.

Correct belt tensioning is achieved simply by means of an adjusting screw(s) with locking nut(s) to ensure that the setting is maintained.



The 'TB' Drive Pump can be inspected and maintained without disturbing its pipework connections. The ease of dismantling allows a new bearing, or a different type of impeller for a considerable alteration of duty to be fitted and the pump put back in service with the minimum of delay.

As we are constantly endeavouring to improve standards, we reserve the right to alter details given without prior notice.

58 Beddington Lane, Croydon, Surrey CR9 4PT, England

Telephone: 01-684 9521

Telegrams: PULPUMP CROYDON Telex: 946597

Northern Regional Sales Office:
 11 Eagle Brow
 LYMM, Cheshire
 Tel: Lymm 5201/2/3
 Telex: 627956

AUG 83 SUPERSEDES OCT 81