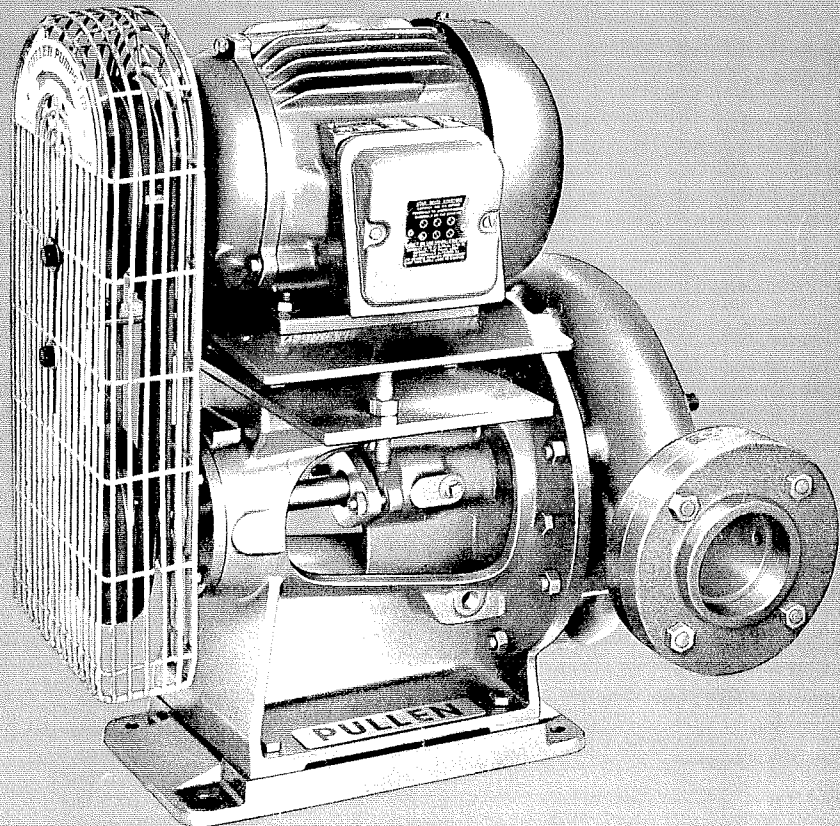
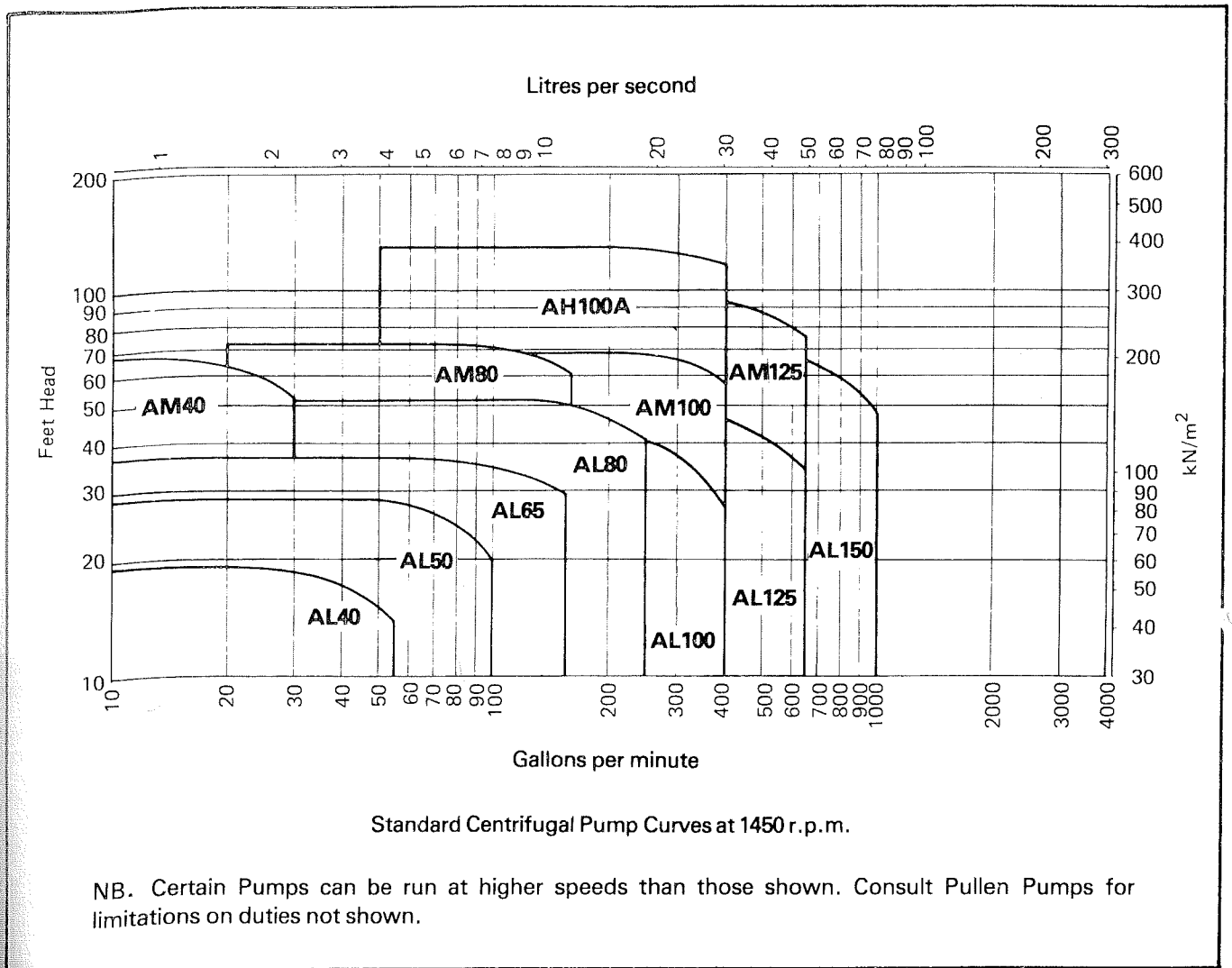


# **PULLEN<sup>®</sup>** **TB CENTRIPUL** **'A' RANGE** **PUMPS**

**for hot and cold water  
and heating installations**



# Performance Characteristics



## Centripul 'A' Range Centrifugal Pumps

The Pullen 'A' Range of Centrifugal Pumps are made to the highest possible standards of design, material and workmanship, all being hand fitted to ensure perfect running. Their aim is to give years of service yet maintain quietness of operation and desired performance.

These pumps are well suited for pumping cold or hot water up to a temperature of 240°F (115°C) and can be supplied with standard packed glands or mechanical seals.

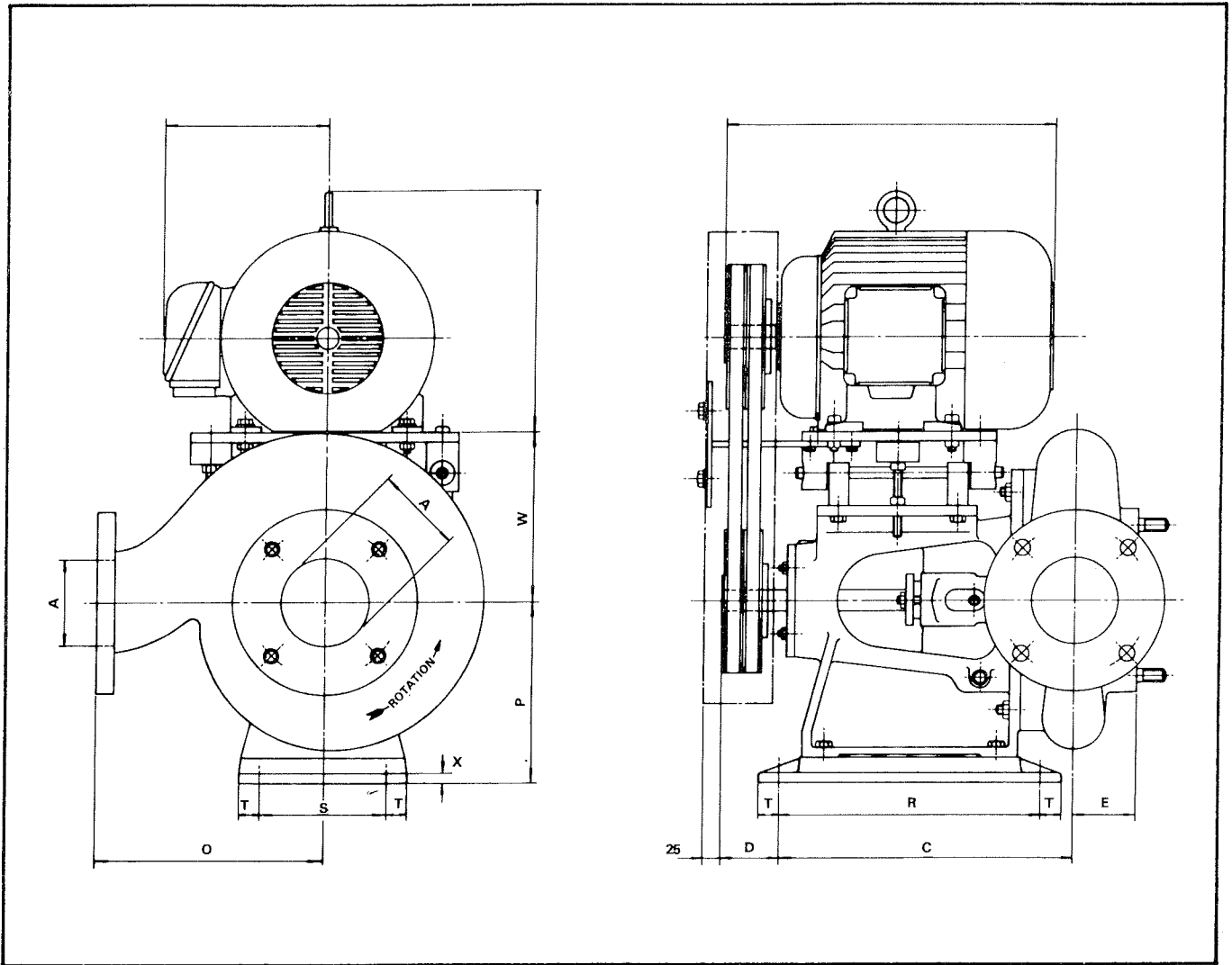
For temperatures of 240°F (115°C) to 340°F (170°C) see Leaflet No. B201M. The great advantage of the Pullen 'TB' DRIVE Pump, which makes it so popular with heating engineers, is its capacity to handle additional loads not envisaged in the original design. By fitting a new Vee Rope Drive the speed of the pump can be increased to give greater output.

An increase in pump speed affects the horsepower absorbed. Should it be necessary to change the motor to obtain a very large increase in duty, this can be done quite economically.

Correct belt tensioning is achieved simply by means of an adjusting screw(s) with locking nut(s) to ensure that the setting is maintained.

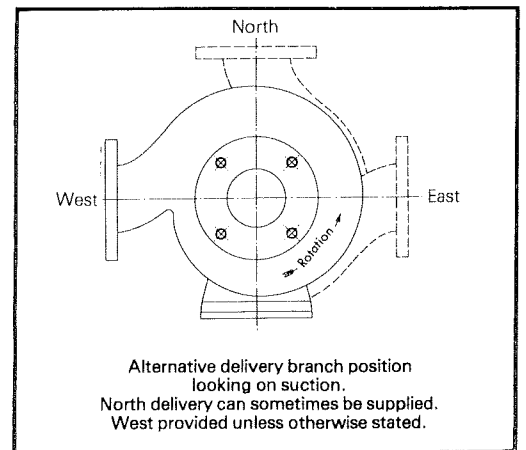
*Packed Glands must not be used in systems with varying pressures.*

# Dimensions



Dimensions in millimetres

PUMP	A	C	D	E	M	O	P	R	S	T	W	X
AL 40	40	250	42	60	10	160	135	230	110	25	115	10
AL 50	50	305	27	60	10	190	190	310	150	25	167	12
AL 65	65	304	27	65	10	220	190	310	150	25	167	12
AL 80	80	345	68	75	10	250	215	310	150	25	192	12
AL 100	100	350	68	80	10	270	215	310	150	25	192	12
AL 125	125	452	52	95	12	310	245	390	240	25	240	15
AL 150	150	527	101	100	16	360	305	510	330	25	280	20
AM 40	40	434	52	55	12	230	245	390	240	25	210	15
AM 50	50	421	52	55	12	215	245	390	240	25	210	15
AM 80	80	444	52	70	12	275	245	390	240	25	240	15
AM 100	100	454	52	80	12	300	245	390	240	25	240	15
AM 125	125	527	101	80	16	360	305	510	330	25	280	20
AH 100	100	548	101	80	16	380	305	510	330	25	280	20



**Notes:**

- 1 Inlet and outlet flanges B.S.T.'D' unless unless otherwise ordered. B.S.4504/N.P.16 flanges can be supplied if required.
- 2 Use 'M' dia. holding down bolts.
- 3 3/8" B.S.P. tapping provided for drip pipe from pump gland.
- 4 Counter flanges are supplied as standard. Screwed flanges on pump sizes up to and including 80mm. Welding flanges on pump sizes 100mm and above.

## Material Specifications

### Casing Pedestal and Baseplate

are constructed from close grained cast iron machined to fine limits.

### Impeller

is cast in high grade gunmetal, accurately balanced and runs in renewable phosphor bronze sealing rings.

### Shaft

is of best quality stainless steel, of large diameter for extra strength, ground to fine limits.

### Bearings

are heavy duty ball bearing externally, sealed for life, with an additional phosphor bronze sleeve bearing internally.

### Pulleys

are of cast iron machined all over and keyed to the end of the shafts for easy removal.

### Vee-Belts

have been carefully chosen to ensure maximum running life and are capable of transmitting a considerable margin over absorbed horsepower.

### Rubber Anti-Vibration Mountings

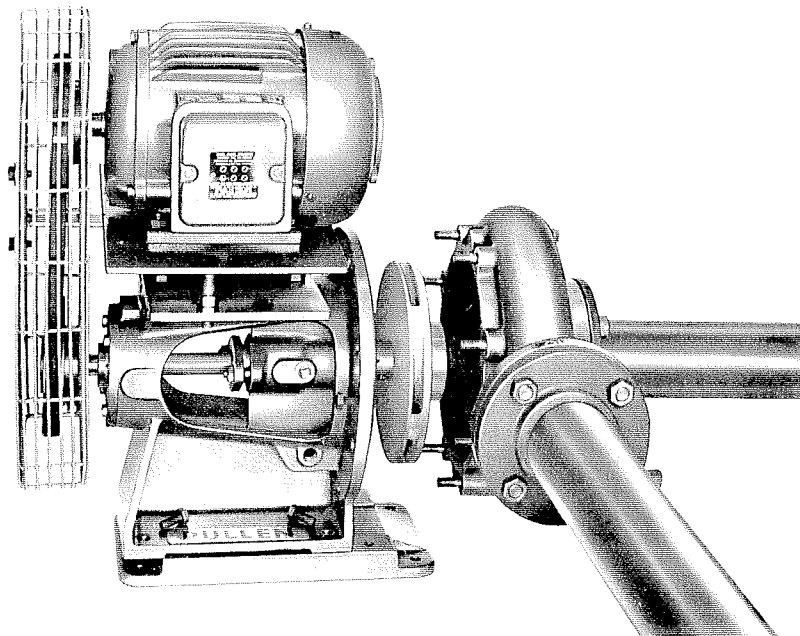
can be fitted between the pump and motor where silent running is required.

### Mechanical Seals

can be fitted to all pumps if required.

### Tests

All pumps are fully tested before they leave our Works to ensure perfect running.



The 'TB' drive pump can be inspected and maintained without disturbing its pipework connections. The ease of dismantling allows a new

bearing, or a different type of impeller for a considerable alteration of duty to be fitted and the pump put back in service with the minimum of delay.

*As we are constantly endeavouring to improve our design and manufacture, we reserve the right to alter details given without prior notice.*



# **PULLEN PUMPS LTD**

58 Beddington Lane, Croydon, Surrey CR9 4PT England

Telephone 01-684 9521    Telegrams PULPUMP CROYDON    Telex 946597

## **PULLEX LTD**

*Export Division of Pullen Pumps Ltd. Address as above.*