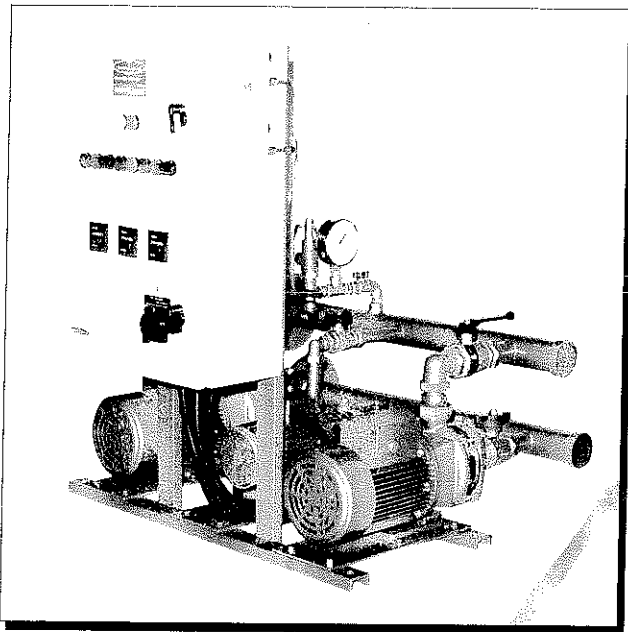




*A wealth of experience*



## Starpak CH Booster Set

The Starpak CH range of booster sets offer a compact and reliable solution to your water supply needs requiring low/medium pressures and flow rates. A Starpak CH booster is the economical answer with a quality product.

### Specification

The fully packaged pumping set shall comprise:

- Pumps:** Cast Iron casing. Stainless steel impellers and shaft. Self adjusting mechanical seal. IP44 motor.
- Baseplate:** Robust heavy gauge steel.
- Pipework:** Copper BS2871 Table X. WRC approved. Sized for 3.0m/s maximum velocity.
- Valves:** Ball type isolating (inlet) and isolating/non return type (discharge). WRC approved.
- Accumulator:** 18 litre fixed diaphragm type. WRC approved.
- Control Panel:** Steel IP54 enclosure. Lockable door with interlocked isolator. Contactors, overloads, fuses, minimum run timers fitted inside. Test/auto switch, duty select switch. Power on and common pump tripped lights on the door.

**Supply:** Three or single phase versions available.

**Duty Options:** Duty/standby, Duty /Assist, Duty/assist/standby, Jockey/duty/standby.

**Optional Extras Available:**

- Volt free contacts for common pump tripped.
- Integral break tank low level alarm with volt free contacts and warning light.
- Larger accumulators, up to 500 litre size. They are supplied loose. Provide longer rest times between operating cycles.
- Customer specification control panel.

### Control Method Options

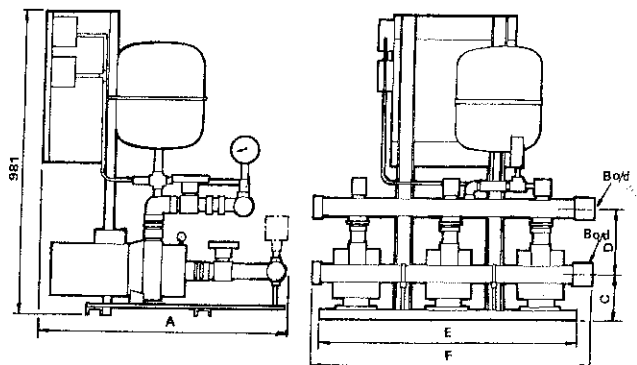
- Pressure switch Type HPB  
 Microstar Type HPBM  
 Float switch Type DT  
 Constant run Type CR  
 Variable speed Type HI

### Typical Designations

Duty/standby set with CH2-50 and pressure switch control: **2-50HPB2**.

Jockey/duty/standby set with CH2-50 jockey, CH12-40 duty and pressure switch control: **2-50/12-40HPB2J**.

### Dimensions



Note: When set is 2 pumps + 1 jockey pump the jockey pump will be the centre pump.

| Pump Range | A   | 2 Pump Set      |     |     | 2 Pump + 1 Jockey Pump Set |     |     | C   | D   |
|------------|-----|-----------------|-----|-----|----------------------------|-----|-----|-----|-----|
|            |     | B o/d Tube Conn | E   | F   | B o/d Tube Conn            | E   | F   |     |     |
| H2         | 795 | 35              | 550 | 625 | 42                         | 850 | 925 | 121 | 130 |
| H4         | 800 | 42              | 550 | 625 | 54                         | 850 | 925 | 121 | 130 |
| H8         | 805 | 54              | 550 | 625 | 67                         | 850 | 925 | 141 | 208 |
| H12        | 805 | 54              | 550 | 625 | 67                         | 850 | 925 | 141 | 208 |



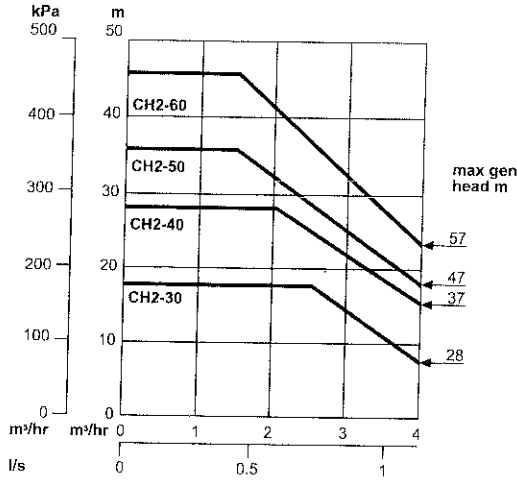
Certificate No. 930846



A wealth of experience

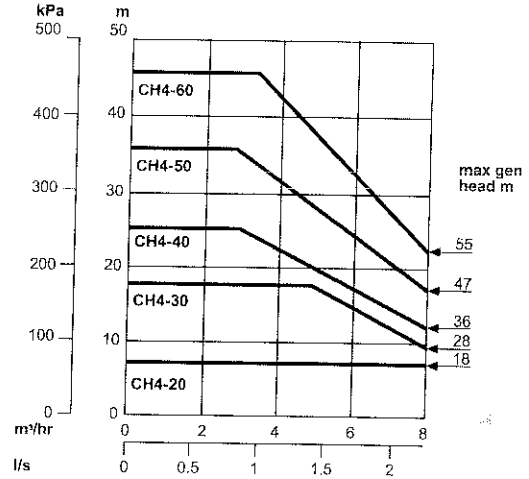
Selection Charts

CH2



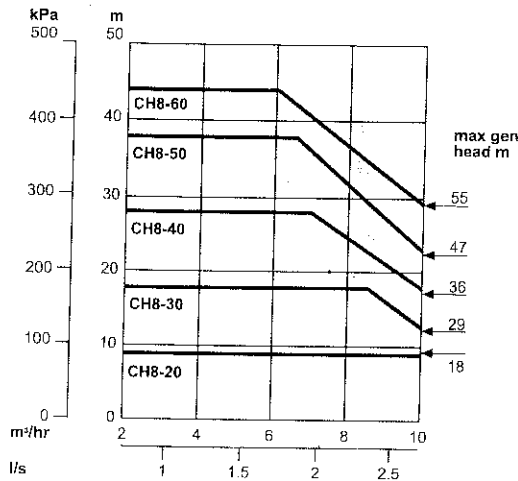
| MODEL  | INPUT POWER KILOWATTS |              | FLC |     |
|--------|-----------------------|--------------|-----|-----|
|        | 220-240V 1PH          | 380-415V 3PH | 1PH | 3PH |
| CH2-30 | 0.530                 | 0.460        | 2.6 | 1.1 |
| CH2-40 | 0.600                 | 0.620        | 2.9 | 1.2 |
| CH2-50 | 0.710                 | 0.690        | 3.3 | 1.4 |
| CH2-60 | 0.840                 | 0.880        | 3.8 | 1.5 |

CH4



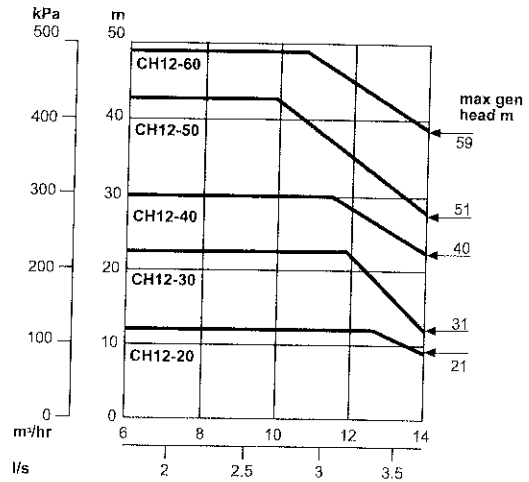
| MODEL  | INPUT POWER KILOWATTS |              | FLC |     |
|--------|-----------------------|--------------|-----|-----|
|        | 220-240V 1PH          | 380-415V 3PH | 1PH | 3PH |
| CH4-20 | 0.570                 | 0.530        | 2.7 | 1.2 |
| CH4-30 | 0.770                 | 0.720        | 3.6 | 1.4 |
| CH4-40 | 1.010                 | 0.920        | 4.7 | 1.7 |
| CH4-50 | 1.250                 | 1.160        | 5.8 | 2.1 |
| CH4-60 | 1.410                 | 1.360        | 6.5 | 2.4 |

CH8



| MODEL  | INPUT POWER KILOWATTS |              | FLC |     |
|--------|-----------------------|--------------|-----|-----|
|        | 220-240V 1PH          | 380-415V 3PH | 1PH | 3PH |
| CH8-20 | 0.730                 | 0.720        | 3.2 | 1.4 |
| CH8-30 | 1.080                 | 1.120        | 5.1 | 2.0 |
| CH8-40 | 1.350                 | 1.370        | 6.2 | 3.1 |
| CH8-50 | 1.830                 | 1.710        | 8.4 | 3.4 |
| CH8-60 | 2.000                 | 2.080        | 9.5 | 3.7 |

CH12



| MODEL   | INPUT POWER KILOWATTS |              | FLC  |     |
|---------|-----------------------|--------------|------|-----|
|         | 220-240V 1PH          | 380-415V 3PH | 1PH  | 3PH |
| CH12-20 | 1.170                 | 1.170        | 5.5  | 2.1 |
| CH12-30 | 1.510                 | 1.550        | 7.1  | 2.8 |
| CH12-40 | 2.310                 | 2.300        | 10.9 | 4.1 |
| CH12-50 | 2.810                 | 2.810        | 12.6 | 5.1 |
| CH12-60 | -                     | 3.400        | -    | 6.0 |

Certified drawings supplied on request

Note: Improvements in general design and modifications in detail will be embodied for the benefit of clients as and when introduced, consequently this specification is subject to alteration, as may be necessary, without notice.

Manufacturers of : • Centrifugal Pumps • Pressurisation Units • Packaged Pump Sets • High Pressure Pumps  
For Pump Spares, Service and Maintenance Contracts

Telephone: 0161-223-2223

Manchester  
Wenlock Way  
West Gorton  
MANCHESTER M12 5JL  
Tel: ++44(0) 161-223-2223  
Fax: ++44(0) 161-220-9660

London  
Unit 2, Princess Mews  
Horace Road  
KINGSTON-U-THAMES KT1 2SZ  
Tel: 0181-547-0411  
Fax: 0181-547-0838

Glasgow  
Tel: 0141-943-1252

Northern Ireland  
Northern Boiler Services Ltd (Agent)  
Unit 29, Bloomfield Commercial Centre  
East Braid Street, BELFAST BT5 5AW  
Tel: 01232-453339  
Fax: 01232-738591