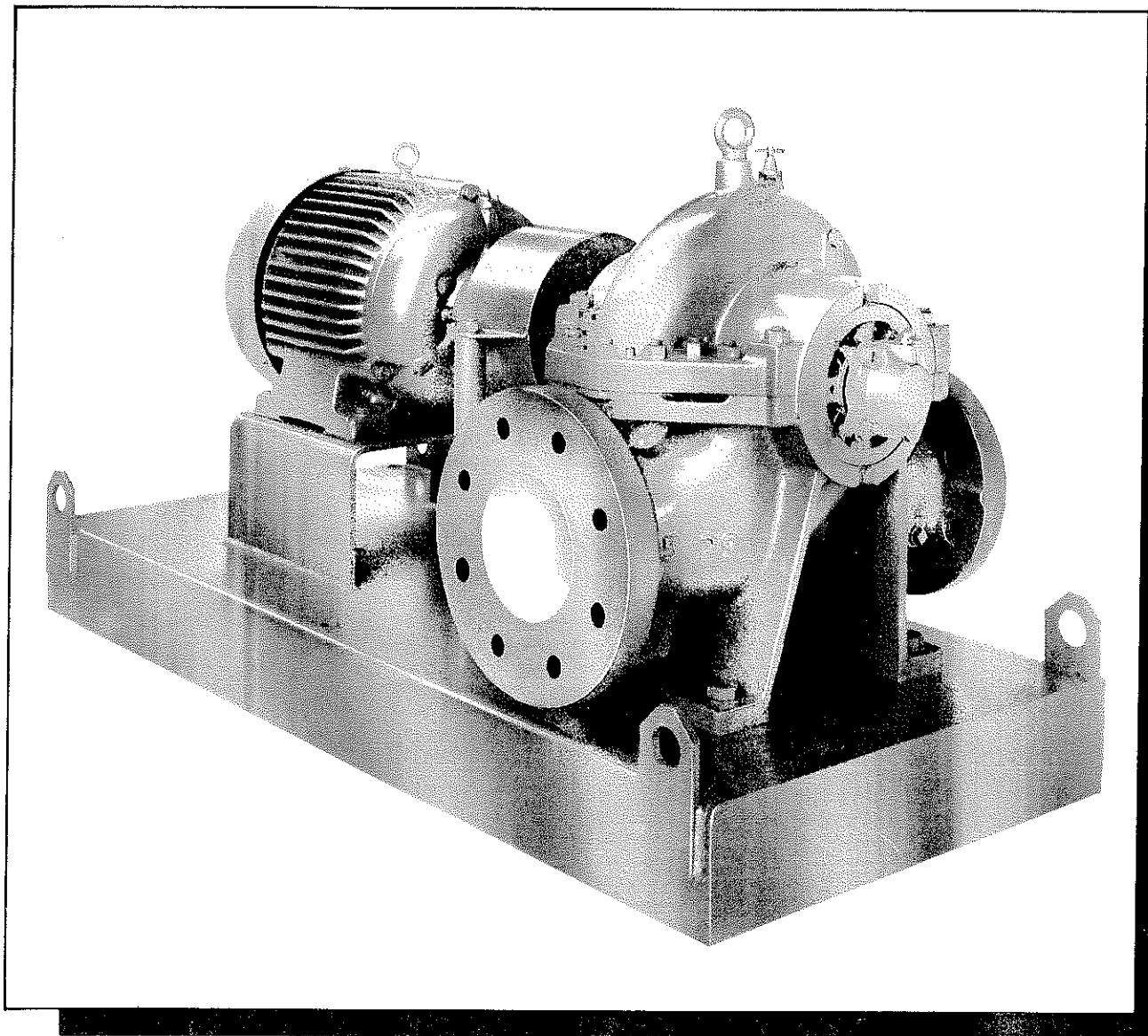




Starflo

Horizontal Split Casing Pumps



OBSOLETE

Holden and Brooke Limited

Wenlock Way, Manchester M12 5JL, England.

Tel: 061-223 2223 Fax: 061-220 9660

The **STARFLO** pump marks a breakthrough in pump design. Using a construction programme based around basic modules it is possible to build a complete range of 22 pumps which cover a wide range of flow and head conditions. This results in a considerable degree of interchangeability amongst components allowing for a large variety of construction options whilst keeping stocks of spares down to a minimum.

The construction of the pump unit is such that it affords easy access for service and maintenance. By removing the top half of the casing it becomes an easy operation to remove the rotating element without the need to disturb any pipework. The rotating element has a positive location feature which allows quick and accurate replacement.

To maintain consistent pump performances the impellers are cast from shell moulded cores. The impellers have been designed to ensure minimum NPSH and maximum efficiency whilst maintaining a stable operating curve. The use of mechanical seals not only makes it possible to have a more compact arrangement but as the shaft length is also reduced it minimises deflection and increases bearing life.

By using a double suction design it has been possible to practically eliminate end thrust and considerably reduce bearing load. The bearings themselves are grease lubricated heavy duty ball type.

Vibration of the set is kept to a minimum due to the heavy construction of the pump casing. The pump feet have been integrally cast with the bottom half of the pump casing and by reason of extending them it also provides support to the inserts which are used to carry the pump bearings.

Pumps can be supplied as bare pump versions or mounted on a mild steel bedplate complete with motor and coupling,

MATERIALS OF CONSTRUCTION

High specification split casing pump

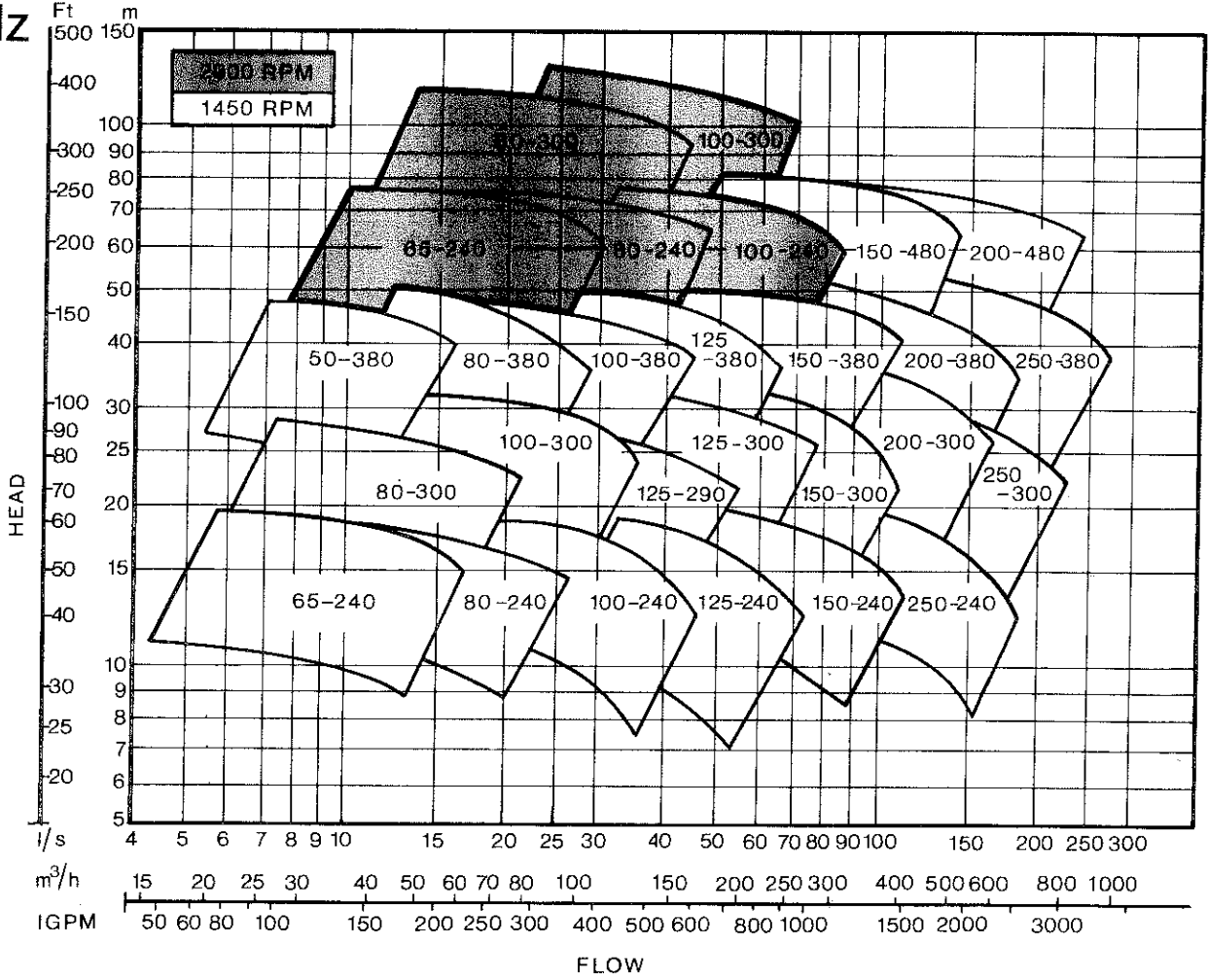
BODY:	Cast Iron
IMPELLER:	Bronze
WEAR RINGS:	Bronze
SHAFT:	Stainless Steel
MECHANICAL SEAL:	Din 24960

OPERATING CONDITIONS

TEMPERATURE:	-8°C up to 80°C
WORKING PRESSURE:	16 Bar
FLANGES:	Drilled PN16

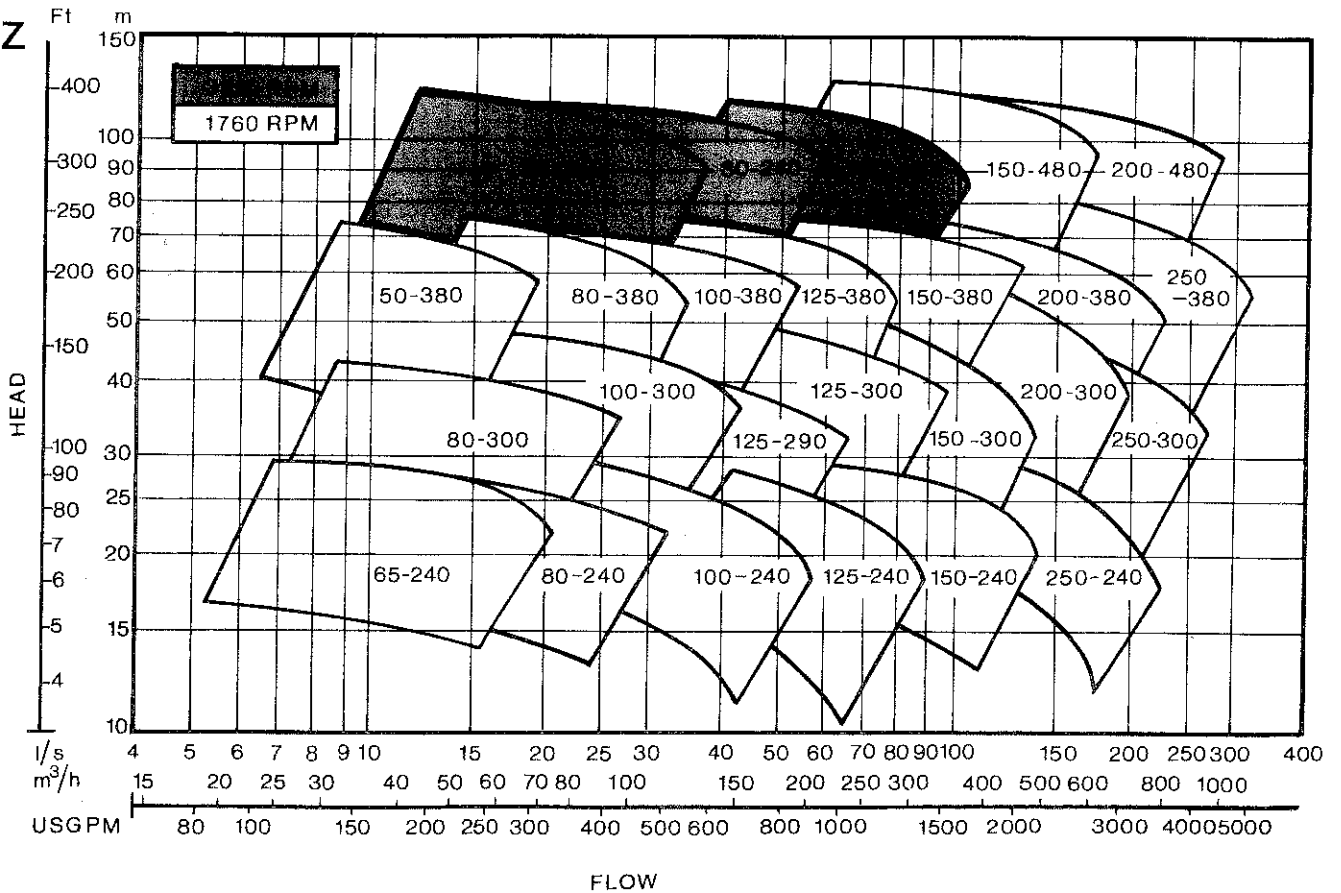
50
Hz

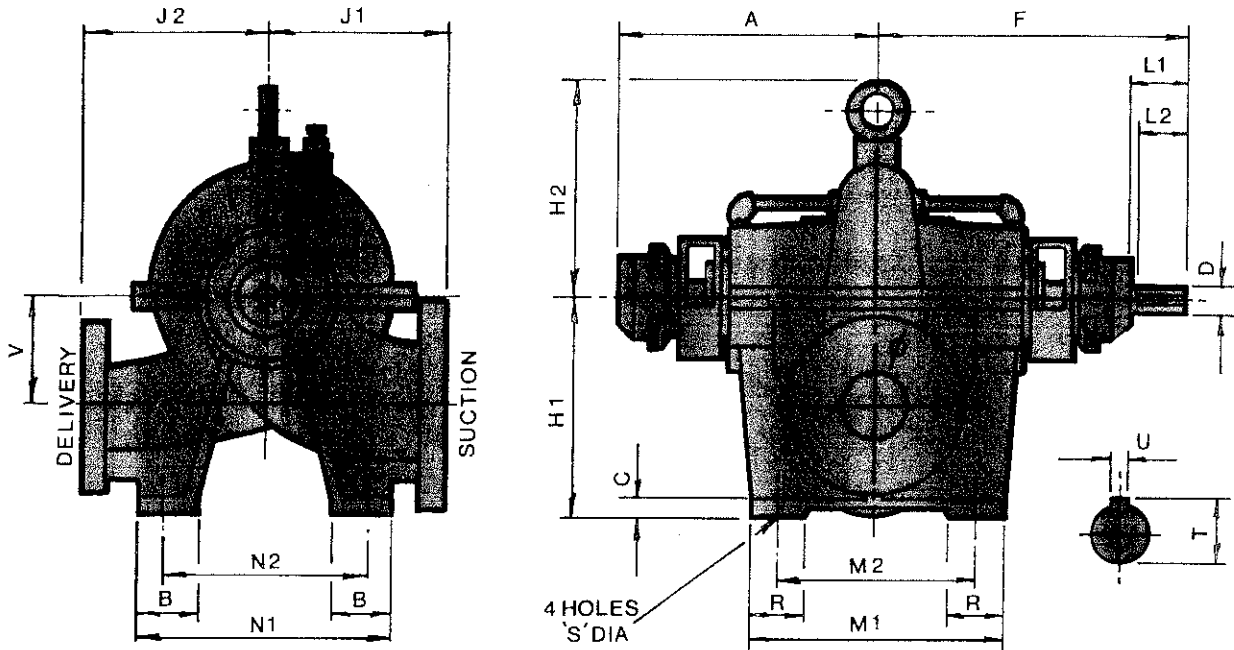
SELECTION CHART 1450/2900 RPM
PERFORMANCE ON WATER SG=1.0



60
Hz

SELECTION CHART 1760/3520 RPM
PERFORMANCE ON WATER SG=1.0





DIMENSIONS

Model	Delivery Dia	Suction Dia	1	A	F	H1	H2	T	M1	M2	R	C	D	E	F	G	H	I	J	K	L	M	N	O
65-240	80	65	1	246	314	250	254	280	225	130	300	240	350	290	65	65	28	8	25-j6	70	63	118	126	203
80-240	100	80		280	249	270	230	250	170															
100-240	150	100	2	301	401	340	308	310	250	180	330	270	400	340	75	75	28	8	25-j6	70	63	255	390	185
125-240	150	125		277	345	390	303	365																
150-240	200	150	1	246	314	340	293	310	290	160	300	240	350	290	65	65	28	8	25-j6	70	63	135	175	238
250-240	250	250				2	346	446	440	375														
125-290	150	125	1	246	314	340	293	310	290	160	300	240	350	290	65	65	28	8	25-j6	70	63	135	175	238
80-300	100	80				2	301	401	320	299														
100-300	125	100	2	277	345	340	309	335	290	175	330	270	400	340	75	75	28	8	25-j6	70	63	175	238	315
125-300	150	125				301	401	440	359	365														
150-300	200	150	2	346	446	540	381	450	385	285	500	440	510	450	75	75	45	12	42-k6	100	90	515	460	315
200-300	250	200				346	446	540	389	430														
250-300	250	250	1	246	314	300	321	355	280	170	330	270	400	340	65	65	28	8	25-j6	70	63	175	194	227
50-380	80	50				2	301	401	320	325														
80-380	100	80	301	401	390	380	400	450	190	330	270	450	390	75	75	45	12	42-k6	100	90	310	355	500	
100-380	125	100	2	301	401	390	380		400															450
125-380	150	125	440	376	410	420	360	400	340	420	350	510	440	90	28	90	28	56	16	55-m6	127	100	570	
150-380	200	150	460	409	480		225	420	350															510
200-380	250	200	3	371	496	540	471	590	420	265	500	430	560	490	90	28	90	28	56	16	55-m6	127	100	647
250-380	300	250					452	510		450														
150-480	200	150	3	371	496	540	452	510	450	270	500	430	560	490	90	28	90	28	56	16	55-m6	127	100	647
200-480	250	200					445	550		450														

Pumps Can Be Fitted With Anti Vibration Isolators As An Optional Extra

Note: Improvements in general design and modifications in detail will be embodied for the benefit of clients as and when introduced; consequently this specification is subject to alteration, as may be necessary, without notice.

HEAD OFFICE
 Holden and Brooke Limited,
 Wenlock Way, Manchester
 M12 5JL, England
 061-223 2223 Fax: 061-220 9660

REGIONAL OFFICES
 Southern
 Unit 2, Princess Mews, Horace
 Road, Kingston-u-Thames, KT1 2SZ
 081-547 0411 Fax: 081-547 0838

Northern
 Wenlock Way, Manchester,
 M12 5JL, 061-223 2223
 Fax: 061-220 9660

Scotland
 110A Maxwell Avenue, Westerton
 Bearsden, Glasgow, G61 1HU
 041-943 1252 Fax: 041-942 7353

Northern Ireland
 John Hind & Sons Ltd, Prince
 Regent Rd, Belfast, BT5 6RS
 0232-792121 Fax: 0232-401177