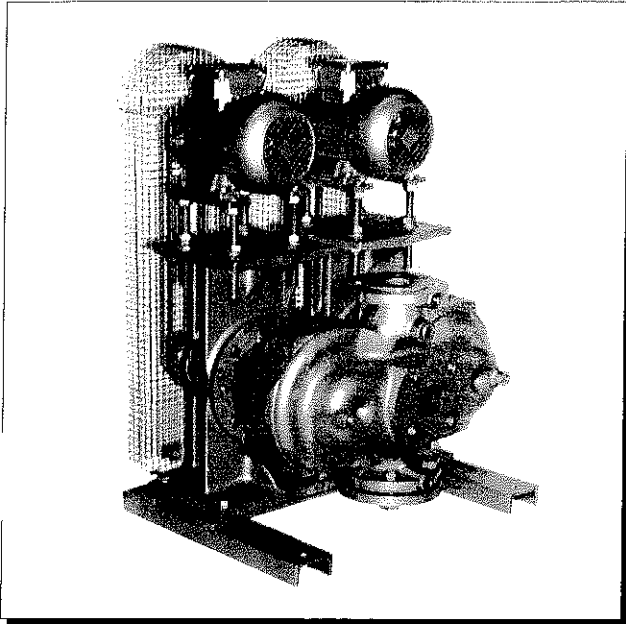




A wealth of experience



Starfix Twin

Starfix Twin has been designed to combine the benefits of the twin head pump with those of the belt drive type. Minimum floor space, easy duty flexibility and low installation cost combine to make Starfix Twin the engineer's choice.

Applications

Extensively specified for LTHW, MTHW, condenser water and chilled water circulation.

Operating Capabilities

Maximum Pressure :	10 bar
Maximum Generated Head :	250 kPa
Maximum Flow Rate :	30 l/s
Maximum Temperature :	145°C
(at suitable pressure and water quality)	

Selection Charts

The selection chart shows the performance of the pumps when driven by a 1450 rpm motor. Pump impeller speeds vary between 1150 rpm and 2000 rpm according to size. Performance at 1450 rpm is shown in chain dot

Specification

- Duty/standby belt drive pump with non return flap valve to allow the use of automatic standby operation.
- Casings and bearing pedestals constructed from BS1452 grade 260 cast iron for ruggedness and long life.
- Impellers, one piece precision cast in gunmetal BS1400 LG2C or cast iron BS1452 grade 220 statically balanced.
- Shaft manufactured in one piece of stainless steel BS970 grade 431 S29, sealed with a self adjusting silicon carbide/carbon mechanical seal for durability.
- Belt drive through amply rated belts and pulleys for long maintenance free intervals.
- Driven by a TEFC cage motor complying with BS4999 and BS5000.

Noise Reduction

Inertia bases, flexible connectors and anti vibration mounts can be supplied where noise transmission has to be minimised.

Flexible Performance

Flexible belt drive allows the pump to be selected for the application needs. If duty conditions change, the pump speed and performance can be adjusted by selection of the appropriate pulley ratio. The adjustable performance option is also helpful for systems where the duty requirement may be subject to change due to unforeseen or unpredictable circumstances.



Certificate No. 9306

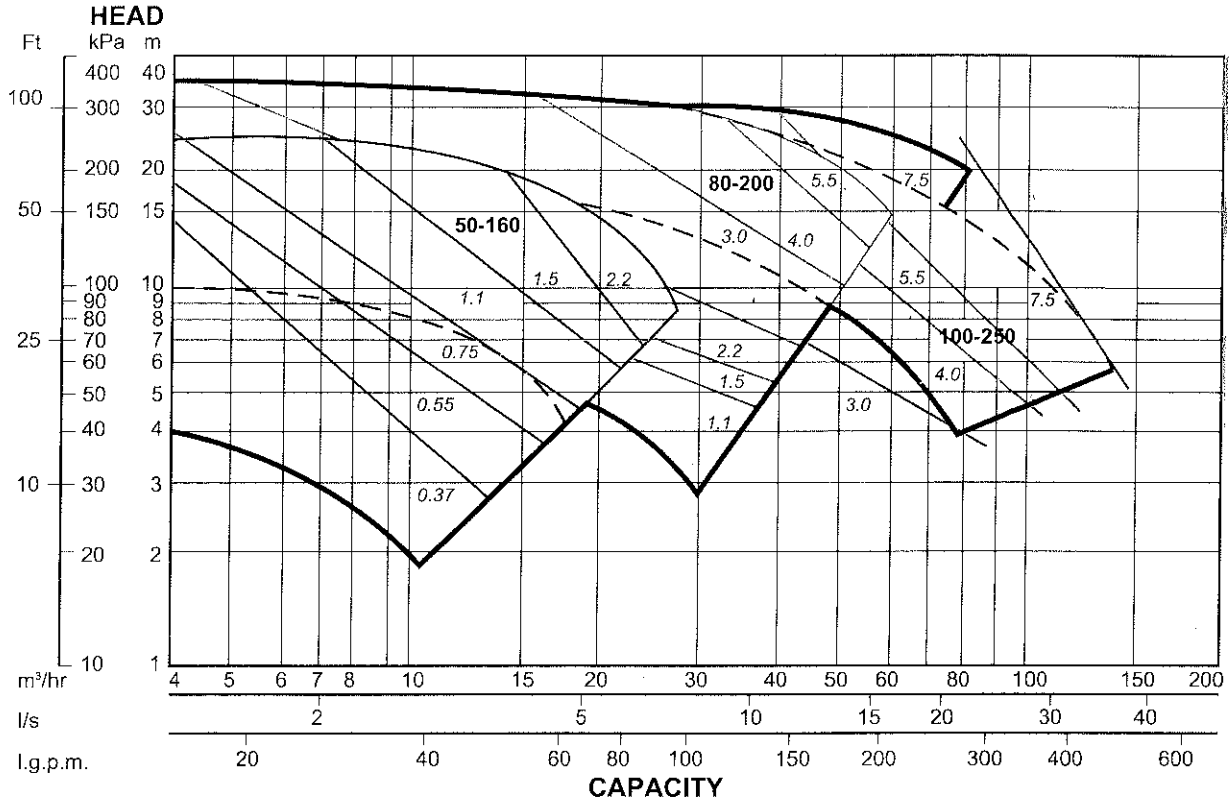


A wealth of experience

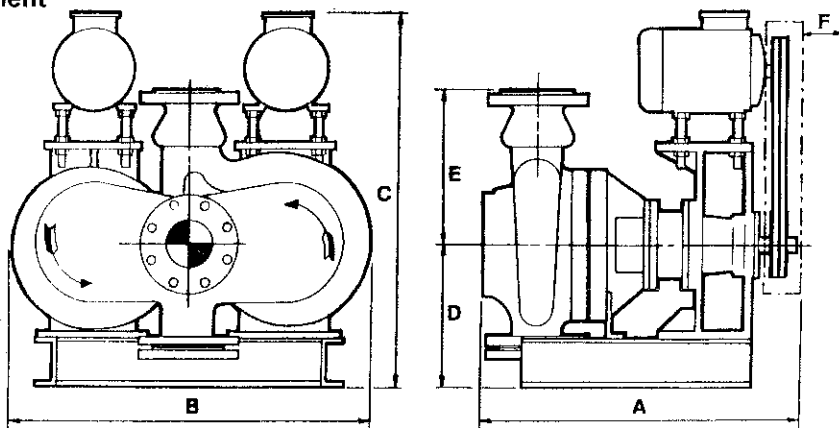
Selection Chart

Starfix Twin Pump
Water SG = 1.0

1450 RPM Impeller Speed Shown Chain Dotted
Motor kW Rating in Italics



General Arrangement



Pump Size	Inlet/Outlet	A	B	C	D	E	F	Wt Kg	kW max
50-160	50 N/B	511	566	763 max	238	175	110	205 max	2.2
80-200	80N/B	562	706	830 max	203	255	130	295 max	7.5
100-250	100N/B	696	789	1000 max	302	330	165	462 max	7.5

Certified drawings supplied on request
Note: Improvements in general design and modifications in detail will be embodied for the benefit of clients as and when introduced, consequently this specification is subject to alteration, as may be necessary, without notice.

Manufacturers of : ● Centrifugal Pumps ● Pressurisation Units ● Packaged Pump Sets ● High Pressure Pumps
For Pump Spares, Service and Maintenance Contracts
Telephone: 0161-223-2223

Manchester
Wenlock Way
West Gorton
MANCHESTER M12 5JL
Tel: +44(0) 161-223-2223
Fax: +44(0) 161-220-9660

London
Unit 2, Princess Mews
Horace Road
KINGSTON-U-THAMES KT1 2SZ
Tel: 0181-547-0411
Fax: 0181-547-0838

Glasgow
Tel: 0141-943-1252

Northern Ireland
Northern Boiler Services Ltd (Agent)
Unit 29, Bloomfield Commercial Centre
East Braid Street, BELFAST BT5 5AW
Tel: 01232-453339
Fax: 01232-738591