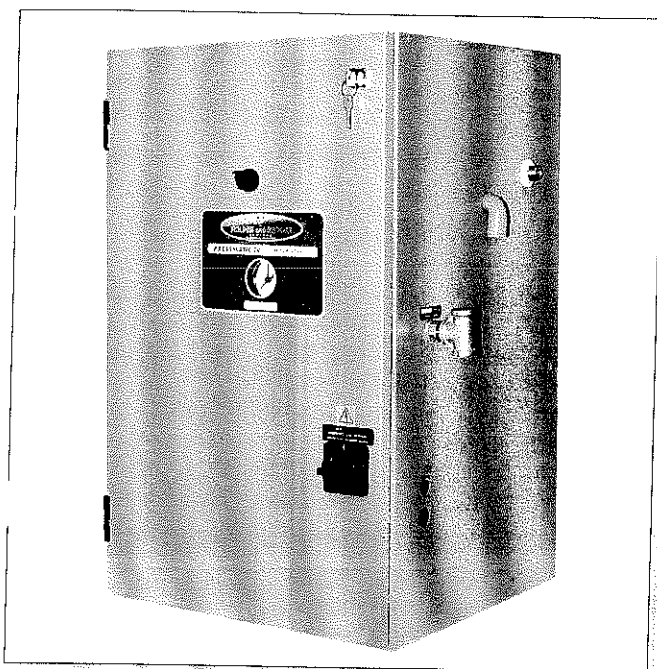




A wealth of experience



Pressmatic IV

Sealed System Pressurisation Sets

Pressmatic IV

Reliability, simplicity, ease of installation and commissioning underpin the design philosophy of the latest pressurisation set from Holden and Brooke Limited. It is suitable for LTHW and chilled water systems up to a static head of 60 m.

The Pressmatic IV complies with:

Water Supply By-Laws 1989 Edition, BS 7074 1989 Health and Safety Executive Guidance Note PM-5C M and E 3

BMS Compatibility

The Pressmatic IV is fitted with volt-free contacts as standard to indicate high and low pressure alarm. These can be indicated to a boiler relay or a BMS.

Volt free contacts for pump running and tripped are available as an option.

Options

Single pump unit
Run/standby pump unit

Optional Extras

- Quick fill connection.
- Hours Run meter(s).
- High head fill pump (3-6 bar).
- Safety Valve.
- Pump run and tripped volt free contacts.
- Fully packaged unit with baseplate.
- Break tank low level cut-out with volt free contacts.

Standard Specification

This is for a single pump set. Standby pump version in brackets.

The system pressure will be maintained between safe limits by a Pressmatic IV comprising :-

1. Powder coated steel enclosure with hinged lockable door.
2. 18 litre WRC approved plastic break tank with close fitting lid, Type 'A' air gap, overflow and inlet strainer.
3. One (two) number fill pump(s) with cage motor having internal overload, bronze body and impeller, fitted with suction and discharge isolating valves. (Pumps arranged for auto changeover on fall in pressure).
4. System isolating valve to enable commissioning of the set prior to opening up to the system.
5. A (two) pump control pressure switch(es).
6. Two pressure switches for high and low system pressure alarm. Switches pre-wired to a terminal strip to provide volt free contacts.
7. System disconnect switch, door interlocked.
8. Duty pump selector switch.

Expansion Vessels

Holden and Brooke Type DE expansion vessels are supplied with the Pressmatic IV to provide a complete package. The 18DE size is supplied packaged with the unit and has a non-replaceable membrane. The 60, 100, 200, 300 and 500 DE sizes are free standing and have replaceable EPDM bags. We supply flexible pressure hose and fittings to enable easy and quick installation. All vessels are suitable for pressures up to 10 Bar and are rated up to 6.0 bar when BS4814 applies. Larger vessels up to 5000L can be supplied.



Certificate No. 930846



A wealth of experience

585 (width), 485 (inner width), 456 (height)

SYSTEM, DRAIN COCKS

VESSLS CAN BE ARRANGED IN SERIES UP TO A MAXIMUM OF FOUR 500 LITRE VESSELS PER LEG. FURTHER LEGS SHOULD BE ARRANGED IN PARALLEL AND POSITIONED TO SUIT FLOOR SPACE AVAILABLE. WHEN 4 OR MORE VESSELS ARE USED THE MANIFOLD LEG(S) SHOULD BE 25 N/B. A DRAIN COCK MUST ALWAYS BE FITTED ON THE END OF EACH LEG.

441crs, 22, 30, 2-SLOTS FOR M8 SCREWS (SEE NOTE 5), LOW WATER LEVEL ALARM (OPTIONAL), HOURS RUN METER(S) (OPTIONAL), DOOR INTERLOCKED ISOLATOR, PRESSURE RELIEF VALVE (OPTIONAL EXTRA), EXPANSION VESSEL CONNECTION 1/2" BSPF, SYSTEM CONNECTION 1/2" BSPF, 20MM CONDUIT CONN. FOR ELECTRICAL SUPPLY

WATER INLET 1/2" BSP MALE (BALLCOCK) WATER SUPPLY PRESS. 0.8BAR MIN., 3/4" OVERFLOW CONNECTION CLIENT TO MAKE UP TO DRAIN IN LINE WITH CLAUSE 30 OF THE WATER BYELAWS 1989 EDITION

ONE PUMP		TWO PUMPS	
FULL OF WATER	EMPTY	FULL OF WATER	EMPTY
90	60	115	85

INITIAL SYSTEM PRESSURE 0-6 BAR (dependent on pump size)
 MAXIMUM ALLOWABLE SYSTEM PRESSURE 10 BAR (dependent on initial system pressure)

MANUAL AIR VENT, SYSTEM, ANTI-GRAVITY VESSEL, SEE NOTE 1

NOTES:

- IF AN ANTI-GRAVITY VESSEL IS SUPPLIED THE SET MUST BE CONNECTED TO THE BOTTOM VESSEL PORT AND THE SYSTEM TO THE TOP.
- NO PART OF THE SET, ANTI-GRAVITY VESSEL OR CONNECTION PIPE IS TO BE LAGGED.
- UNDER NO CIRCUMSTANCES MUST WATER TREATMENT BE INTRODUCED TO THE SYSTEM VIA THE BREAK TANK EXCEPT WHEN A DE-MINERALISED WATER SET IS SUPPLIED. THIS SHOULD BE CONNECTED TO THE BREAK TANK BALLCOCK.
- ALL VESSELS ARE SUPPLIED LOOSE. THE 18 LITRE VESSEL IS NOT FREE STANDING AND MUST BE AFFIXED TO AN ADJACENT WALL OR SUPPORT COLUMN.
- SET CAN BE EITHER FLOOR MOUNTED OR 'HUNG' ON A WALL USING THE 'KEYHOLE' SLOTS PROVIDED ON THE BACK OF THE ENCLOSURE.

TO SET CONNECTION, EXPANSION VESSEL

LITRES	A	B
18	280	355
60	408	680
100	480	740
200	634	940
300	834	1110
500	740	1320

VESSEL SIZE LITRES	VESEL FULL OF WATER	(kg) EACH EMPTY
18	28	15
60	61	19
100	96	26
200	183	43
300	258	48
500	429	79

Certified drawings supplied on request
 Note: improvements in general design and modifications in detail will be embodied for the benefit of clients as and when introduced, consequently this specification is subject to alteration, as may be necessary, without notice.

Manufacturers of : ● Centrifugal Pumps ● Pressurisation Units ● Packaged Pump Sets ● High Pressure Pumps
For Pump Spares, Service and Maintenance Contracts
Telephone: 0161-223-2223

Manchester
 Wenlock Way
 West Gorton
 MANCHESTER M12 5JL
 Tel: ++44(0) 161-223-2223
 Fax: ++44(0) 161-220-9660

London
 Unit 2, Princess Mews
 Horace Road
 KINGSTON-U-THAMES KT1 2SQ
 Tel: 0181-547-0411
 Fax: 0181-547-0838

Glasgow
 Tel: 0141-943-1252

Northern Ireland
 Northern Boiler Services Ltd (Agent)
 Unit 29, Bloomfield Commercial Centre
 East Braid Street, BELFAST BT5 5AW
 Tel: 01232-453339
 Fax: 01232-738591