

MINI-PRESSMATIC

SEALED SYSTEM PRESSURISATION SET

Publication No.

1635 J/1

Section

2



Holden and Brooke Limited

OCTOBER 1988

INTRODUCTION

The Mini-Pressmatic is a competitively priced basic pressurisation set for sealed systems. The unit comprises break tank with lid, centrifugal pump(s) with continuously rated single phase motor, pressure switch, pressure reducing valve with gauges, diaphragm vessel and interconnecting pipework and valves. The assembly is mounted on to a mild steel baseplate and incorporates a 38mm airgap to meet T.W.A. requirements. The set is available with vessel or vessels from our standard range, size availability is 19L, 60L, 100L, 200L, 300L, and 500L. Combinations of vessels can be used to meet the system requirements. Vessels are supplied loose and require connecting pipework to be fitted on site.

As optional extras the sets can be supplied with high and low pressure switches and starter starting. The Mini-Pressmatic is available to complement our Pressmatic MKIII or Microstar Pressmatic for small systems, run around coil circuits and installations where a small basic set is deemed adequate and is available as a single or twin pump version.

INFORMATION REQUIRED TO SIZE VESSEL

- 1) Static head from highest point in system to position of set – Metres.
- 2) System flow temperature °C.
- 3) System return temperature °C.
- 4) Total water content of system – Litres.
N.B:- If at the estimating stage this is not known, allow 14 litres/kw boiler power
- 5) Total boiler/Chiller power rating kw.
- 6) Maximum system working pressure bar. Where part of the system is below the Mini-Pressmatic set, the static head of that part of the system will require to be deducted from the maximum system working pressure absolute when calculating the vessel acceptance factor.
- 7) Note:- The set will be designed for connection to the system on the return side of the boiler and the suction side of the circulating pumps. If it is required to connect at any other point, account will have to be taken of the residual circulating pump pressure and flow temperature at that point.

METHOD OF SIZING VESSEL

The method of sizing the vessel is as Pressmatic MkIII – 1631/J1 or Microstar Pressmatic – 1634/J1

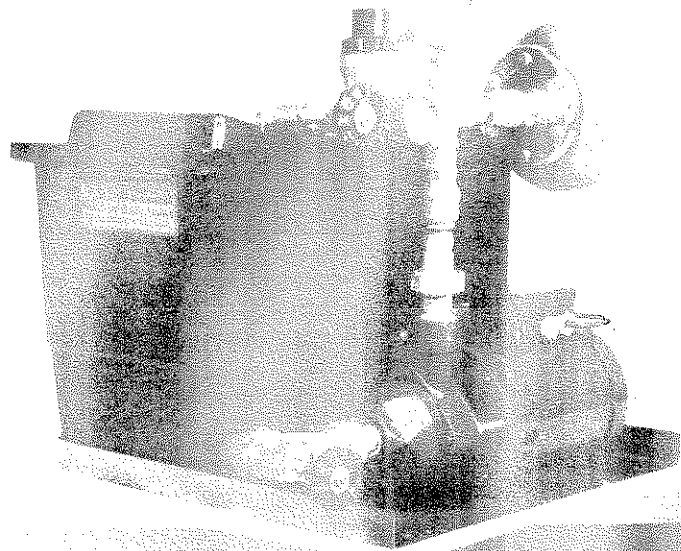
TECHNICAL DATA

Motor kw	1/50/240	
	Full load amps	Starting amps
0.37	2.8	15

Max: Initial system pressure 5 bar (cold fill)

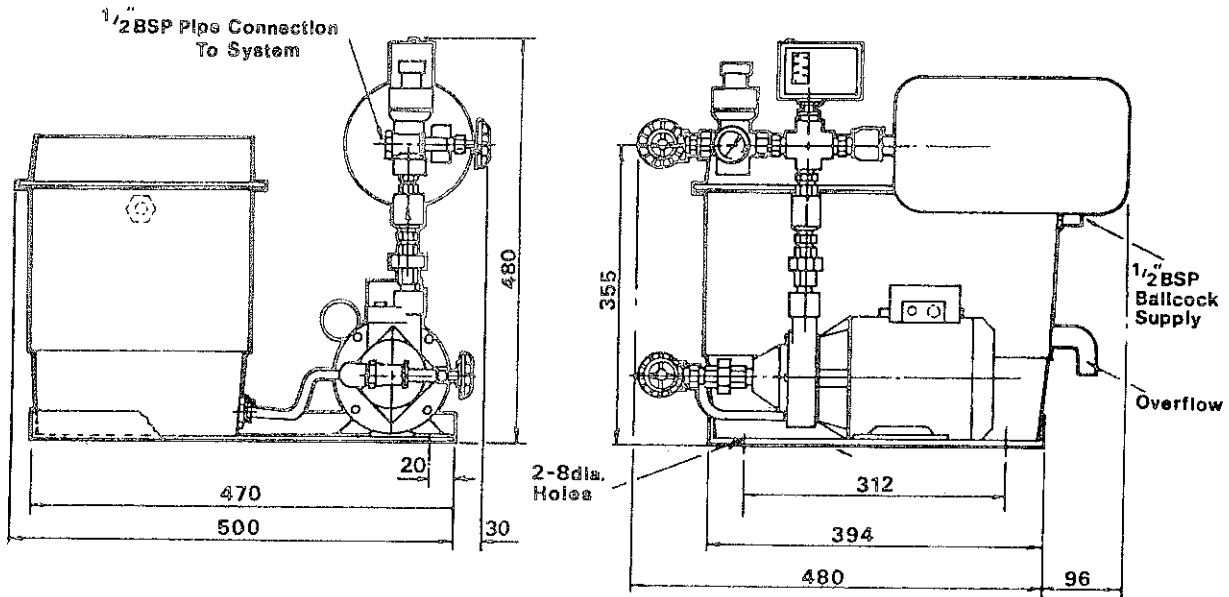
Max: System working pressure 10 bar

Max: System temperature 140°C.

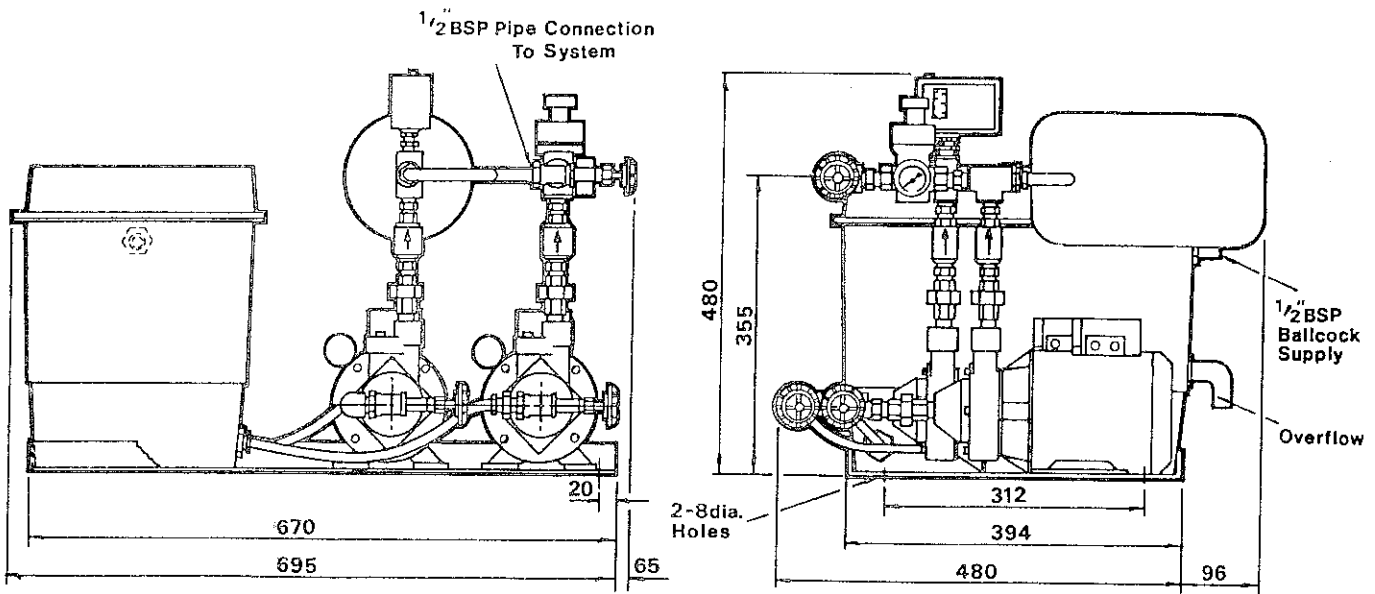


DIMENSIONS

ONE PUMP SET



TWO PUMP SET



NOTE:
 INITIAL SYSTEM PRESSURE UP TO 5BAR
 MAXIMUM ALLOWABLE SYSTEM PRESSURE
 10BAR DEPENDENT ON INITIAL SYSTEM
 PRESSURE

CERTIFIED DRAWINGS WILL BE SUPPLIED ON APPLICATION.

Note: — Improvements in general design and modifications will be embodied for the benefit of clients as and when introduced; consequently the specification is subject to alteration as may be necessary, without notification.

Head Office
 Haverford Street,
 Manchester M12 5JL England.
 Tel: 061-274 4242 Telex: 667318
 Fax: 061-274 3068

Regional Offices
SOUTH
 128 Maiden Road
 New Malden
 Surrey KT3 6DD
 01-949 3441 Fax: 01-336 1073

NORTH
 Haverford Street
 Manchester M12 5JL
 061-274 4242

SCOTLAND
 112 Main Street
 Milngavie
 Glasgow G62 6JN
 041-943 1252

NORTHERN IRELAND
 John Hind & Sons Ltd.
 Prince Regent Road
 Belfast BT5 6RS
 0232 792121