

CONDENSATE RECEIVER SETS MK II

Publication No.

1643J/1

Section

3

OCTOBER 1989



With energy costs at their present high level, the conservation and optimum use of residual heat has never been more important. Condensate is one of the prime sources of such heat and the condensate receiver set is a means of collecting, storing and using this heat to maximum advantage.

Standard Condensate Receiver Sets incorporating our Starbloc pumps for low N.P.S.H. built in accordance with M & E 3 will handle condensate at temperatures to 95°C (203°F), with input rates to a maximum of 15,000Kg/hr. The unit comprises a mild steel tank of 250, 500 or 1000 litre capacity dependent on the flow rate, two float switches, one Starbloc pump and motor (or two pumps where standby facility is required). Isolating valves are fitted between the pump and tank. A mild steel frame mounting gives a compact assembly occupying a minimum of floor space.

The sets are designed so that access is only needed to the front and top. The remaining sides can be positioned close to walls or obstructions without detriment.

A feature of these sets is the low overall height.

Pump

Body: Cast Iron BS.1451 Grade 260
Shaft: Stainless Steel BS.970 Grade 431 S29
Mechanical Seal: Din 24960 Self Adjusting
Impeller: Gunmetal BS.1400 LG2C.
Flanges: To BS.4504 Pt. 1 1969 Table 10.

Motor

Single or three phase flange mounted. Totally enclosed fan ventilated to BS 5000 and BS 4999 C1. 'F'. Supply 50 or 60 Hz. 1450, 1750 or 2900 R.P.M.

Float Control

Two glass filled nylon construction with reed switch operated by a magnet encapsulated in the float switch. One switch is mounted at the top of the tank to start, the other at tank bottom to stop the pump.

Receiver Tank

Mild steel BS.1449 Pt. 1A HR15/BS.1501 Grade 151-430A. BS.3602-HFS 27, welded construction. Standard bosses are fitted for inlet, overflow/vent, sight glass, float switches and pump connections, an inspection cover is fitted to all tanks. A

water level gauge and/or galvanised receiver tank are available as an optional extra.

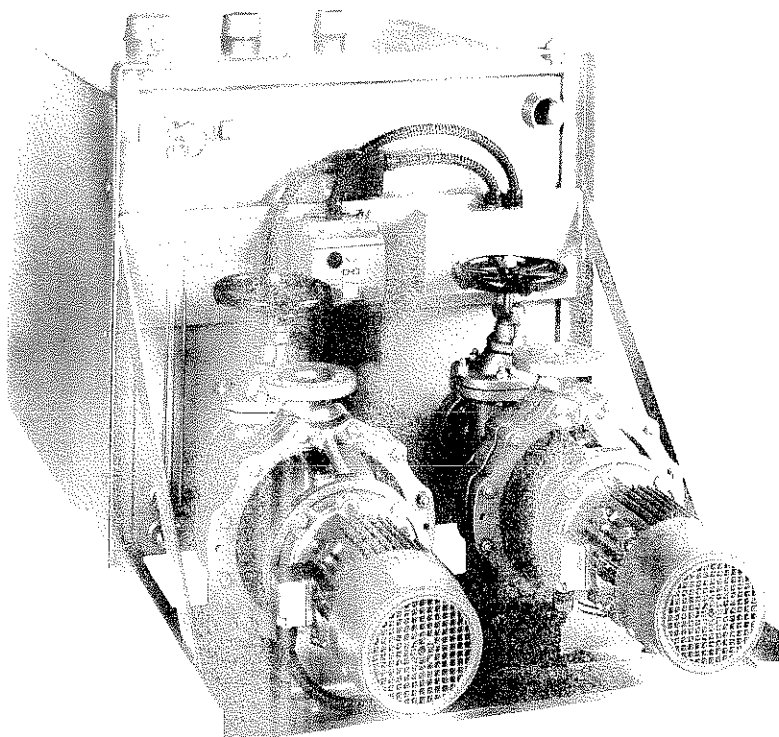
COPPER TANKS TO BS.2870-1980 ARE ALSO AVAILABLE.

Starters

Motor starters are available as an extra and if required can be wired up to the motor and float switch relays.

Capacities

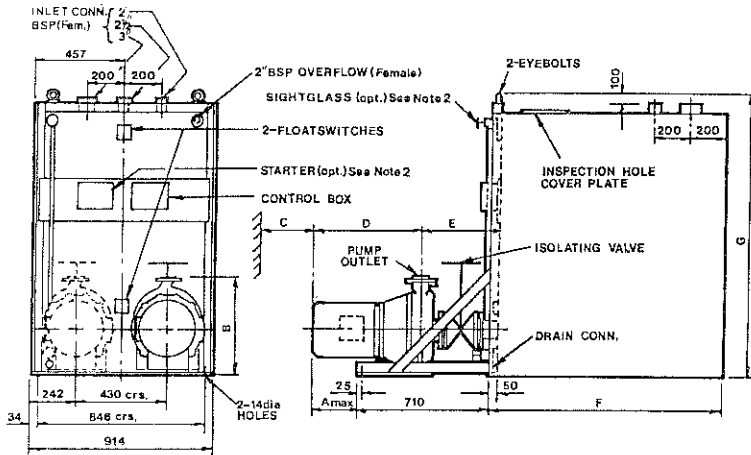
Sizes and duties are based on the pump output being twice the condensate input and the tanks are sized to limit the number of pump starts to 8 per hour.



NOTE: A COPPER TANK IS AVAILABLE AS AN ALTERNATIVE. DUTIES AND LAYOUTS OUTSIDE OUR STANDARD RANGE CAN BE ACCOMMODATED.

Temperatures up to 100°C on application.

Designed and made in Britain



- NOTE:
1. GUNMETAL PUMPS HAVE FULL FLAT FACE FLANGES.
 2. STARTER AND SIGHTGLASS ARE ONLY SUPPLIED WHEN ORDERED.
 3. IF SINGLE PUMP SET IS ORDERED PUMP POSITIONED AS SHOWN IN FULL LINE.
 4. TANK MUST BE VENTED TO THE ATMOSPHERE.

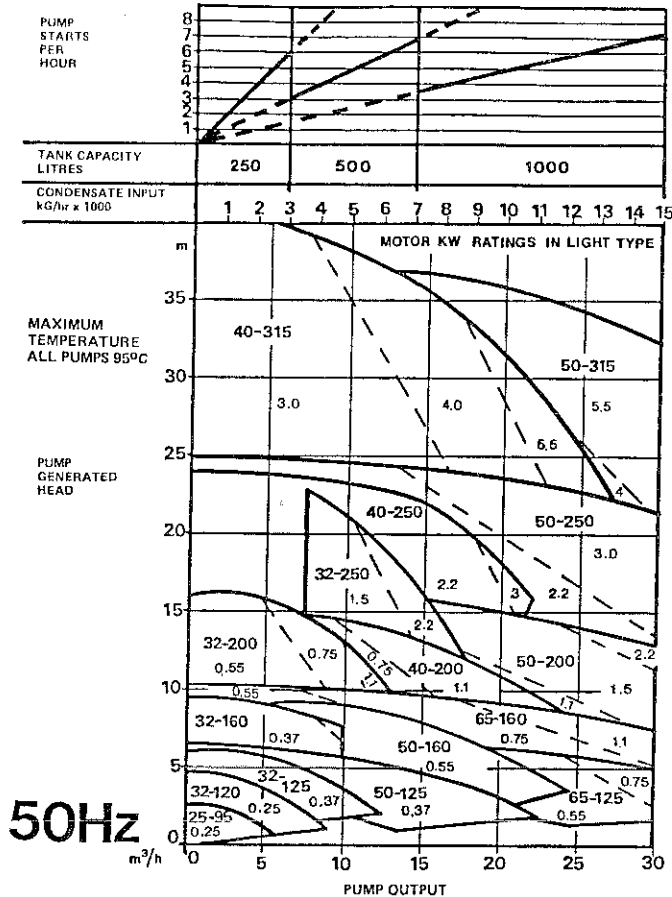
CONDENSATE SET DIMENSIONS

TANK SIZE LITRES	F	G	WEIGHT OF UNIT (Kg) EXC. PUMP(S) & MOTOR(S)	
			DRY	WET
250	964	945	200	520
500	964	1245	250	845
1000	1265	1545	350	1455

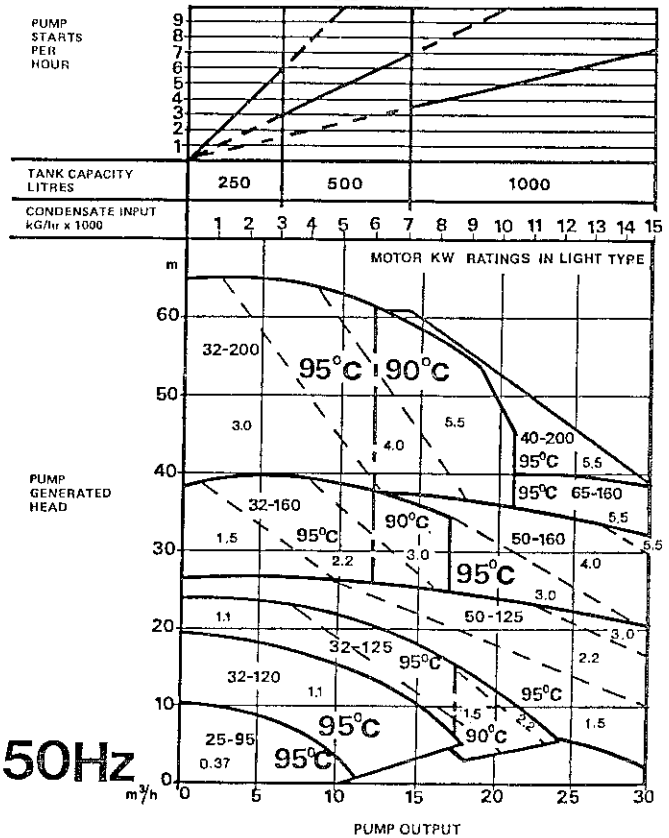
CONDENSATE SET DIMENSIONS

PUMP SIZE	MOTOR FRAME SIZE	A	B	C	D	E	OUTLET SIZE AND TYPE OF CONN	WEIGHT OF PUMP AND MOTOR (Kg)
25-95	B42	/	213	60	290	365	TAPPED	13
	B56	/	260	55	285	405	TAPPED	15
32-120	B42	/	260	55	285	405	1 1/4 BSP x 20 DP	19
	B56	/	260	55	325	405	1 1/4 BSP x 25 DP	22
32-125	B56	65	265		437		32NB	48
	D90	65	265		455			55
32-160	B56	65		305	468		32NB	58
	D90	65		305	488			65
32-200	D100	120		120	508	386	32NB	78
	D112	134		120	508	386		90
32-250	B56	65		353	437		32NB	67
	D90	60		353	430			67
40-200	D100	115		130	468		40NB	85
	D112	135		130	508			97
40-250	D132	200		148	574		40NB	125
	D90	115		160	458			93
40-315	D100	150		160	502	406	40NB	106
	D112	175		160	588			118
50-125	B56	70		130	437		50NB	70
	D90	65		130	430			77
50-160	D100	115		130	480		50NB	90
	D112	125		130	508			130
50-200	D132	200		148	574		50NB	108
	D90	115		160	458			120
50-250	D100	150		160	502	406	50NB	135
	D112	180		160	522	418		147
50-315	D132	275		160	613		50NB	180
	B56	50	265		437			55
65-125	D90	85	285		468		65NB	62
	B56	50	265		437			77
65-160	D90	70		120	455	373	65NB	65
	B56	70		120	468			72
65-200	D100	105		130	488		65NB	85
	D112	125		130	508			97
65-250	D132	190	325		574		65NB	127
	D90	105		160	455			79
65-315	D100	135		160	488	406	65NB	93
	D112	175		160	502			118
65-125	D112	195	418	160	522	431	65NB	130
	D132	260	518	160	588			157
65-160	D112	195	418	160	522	431	65NB	150
	D132	260	518	160	588			184
65-200	B56	75	305		437		65NB	59
	D90	85	305		437	406		66
65-250	B56	85	353		437		65NB	65
	D90	85	353		437	406		67
65-315	D132	220		140	574		65NB	128

SELECTION CHART STAR RANGE
END SUCTION PUMPS 1450 RPM
PERFORMANCE ON WATER SG = 1.0



SELECTION CHART STAR RANGE
END SUCTION PUMPS 2900 RPM
PERFORMANCE ON WATER SG = 1.0



Specifications subject to change without notice

HEAD OFFICE
Holden and Brooke Limited, Haverford Street,
Manchester M12 5JL, England. 061-274 4242
Telex: 667318 Fax: 061-274 3068

REGIONAL OFFICES
Southern
128 Malden Road, New Malden,
Surrey, KT3 6DD. 01-949 3441
Fax: 01-336 1073

Northern
Haverford Street, Manchester
M12 5JL. 061-274 4242

Scotland
112 Main Street, Milngavie,
Glasgow G62 6JN.
041-943 1252

Northern Ireland
John Hind & Sons Ltd., Prince
Regent Road, Belfast, BT5 6RS.
0232 792121