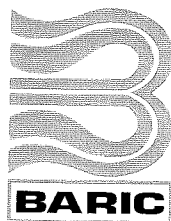
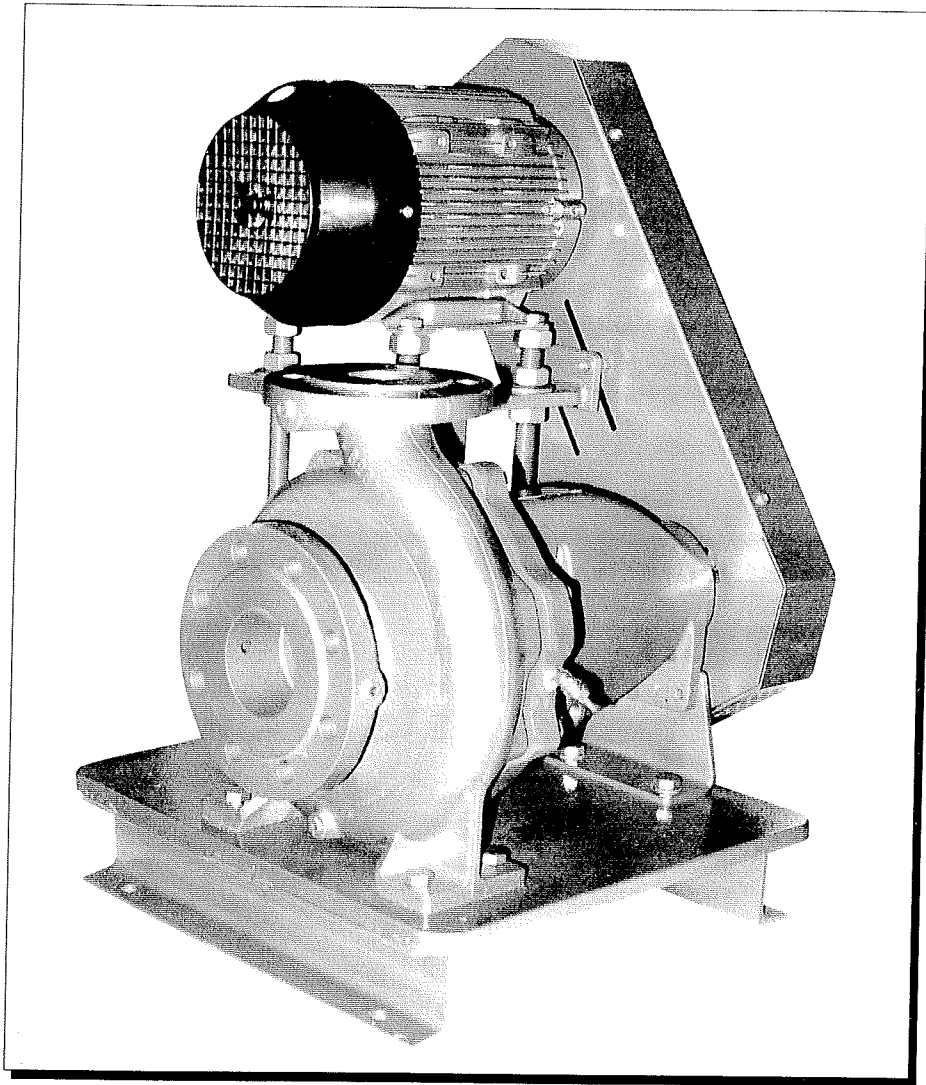

Veepak

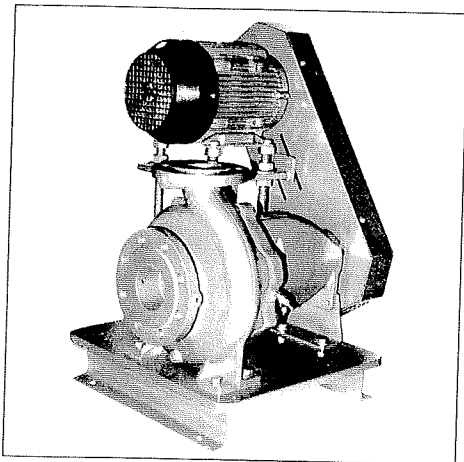
*belt driven
end suction pumps*



Finest in fluid handling



Certificate No. 936649



TYPE VEEPAK BELT DRIVEN PUMPS

Baric Pumps Limited belt driven end suction pumps use the latest pumping technology to meet the demands imposed by today's market.

Applications

Designed for continuous service handling hot or cold liquids and general purpose pumping of clean non-abrasive applications.

Flexible Performance

Flexible belt drive allows the pump to be selected for the application needs. If duty conditions change, the pump speed and performance can be adjusted by selection of the appropriate pulley ratio. The adjustable performance option is also helpful for systems where the duty requirement may be subject to change due to unforeseen circumstances or unpredictable requirements.

Features

Design references are in accordance with BS 5275 for horizontal end suction centrifugal pumps.

Strain on the pump set is avoided by having integral feet mounted on to the pump body housing. By doing this it ensures that any pipe loads are passed directly to the foundations.

Back pullout design for easy maintenance and refurbishment of major parts. The pipework flange connections do not need to be broken nor the motor disturbed for access to the bearing pedestal, shaft, seal or impeller.

Back vanes are incorporated on all our shrouded type impellers. This serves to ensure hydraulic balance and prolongs pump bearing life. The impellers are cast in one piece thus removing any stress and corrosion points.

In order to reduce impeller loads on the shaft and thus increase bearing life, many of the pump casings feature a twin volute arrangement.

The fact that the casing and seal cavity dimensions are based around ISO 2858 and BS 5257 make the pumps interchangeable in pipe fixing dimensions and performance with any pump built to the same specifications.

Trouble free operation and minimal maintenance is achieved by the robust construction of these pumps. Should sound attenuation be advised, anti-vibration mountings or inertia bases can be supplied as an optional extra.

Speed

By careful choice of drive pulley ratios, the VEEPAK performance curve can be selected to suit the system requirements.

When specifying a pump, Baric Pumps Limited will offer the optimum selection, taking into account such factors as cost, efficiency and clients preferences. Where future performance needs are predictable, these can be accommodated in the selection.

Construction

Pump Body : Cast Iron.
North discharge, flanges
BS4504-16 bar rating.

Bearing Pedestal : Cast Iron.

Impeller : Gunmetal or
Cast Iron.

Shaft : Stainless Steel.

Bearings : Grease Lubricated
Ball Bearing.

Seal : Mechanical Seal
DIN 24960 or
Packed Gland.

Motor : T.E.F.V. Foot
Mounted.

Drip proof or energy efficient on request.

Materials of Construction

Cast Iron : BS 1452 Gr 260.

Gunmetal : BS 1400 LG 2C.

Stainless Steel : BS 970 Gr 431 S29.

Operating Capabilities

Pressure : 16 bar Pump Body.

Discharge Head : Up to 800 kpa.

Capacity : Up to 300 litres/sec.

Temperature : Up to 125°C normal.

145°C with :

special uncooled

mechanical seal at

suitable pressure

and water quality.

Up to 175°C with

gland cooling and

soft packing.

Note: temperature and pressure limitations are the maximum in each case, not a combination of both.

Flanges : BS 4504-16 bar rating.

Discharge : North only.

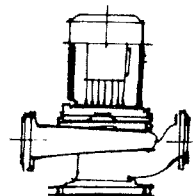
Selection Charts

The selection charts show firstly, chart 1, the nominal pump performance with a 1:1 pulley ratio and a 4-pole 50Hz electric motor at 1450 rpm.

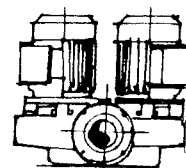
VEEPAK pumps can be run at higher speeds which will vary according to the hydraulic and mechanical characteristics and strengths of the pump. Chart 2 shows the capabilities of each pump at its maximum safe running speed. Consult Baric Pumps Limited for individual pump curves at these speeds.

Some other Baric Products

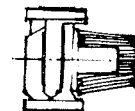
Linepak in-line centrifugal pumps



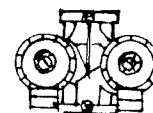
Twin Linepak in-line centrifugal pumps



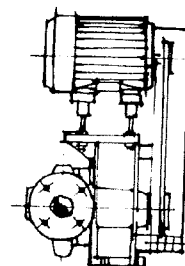
Thermopak glandless circulators



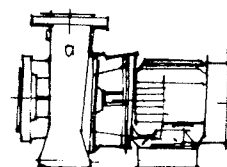
Twin Thermopak glandless circulators



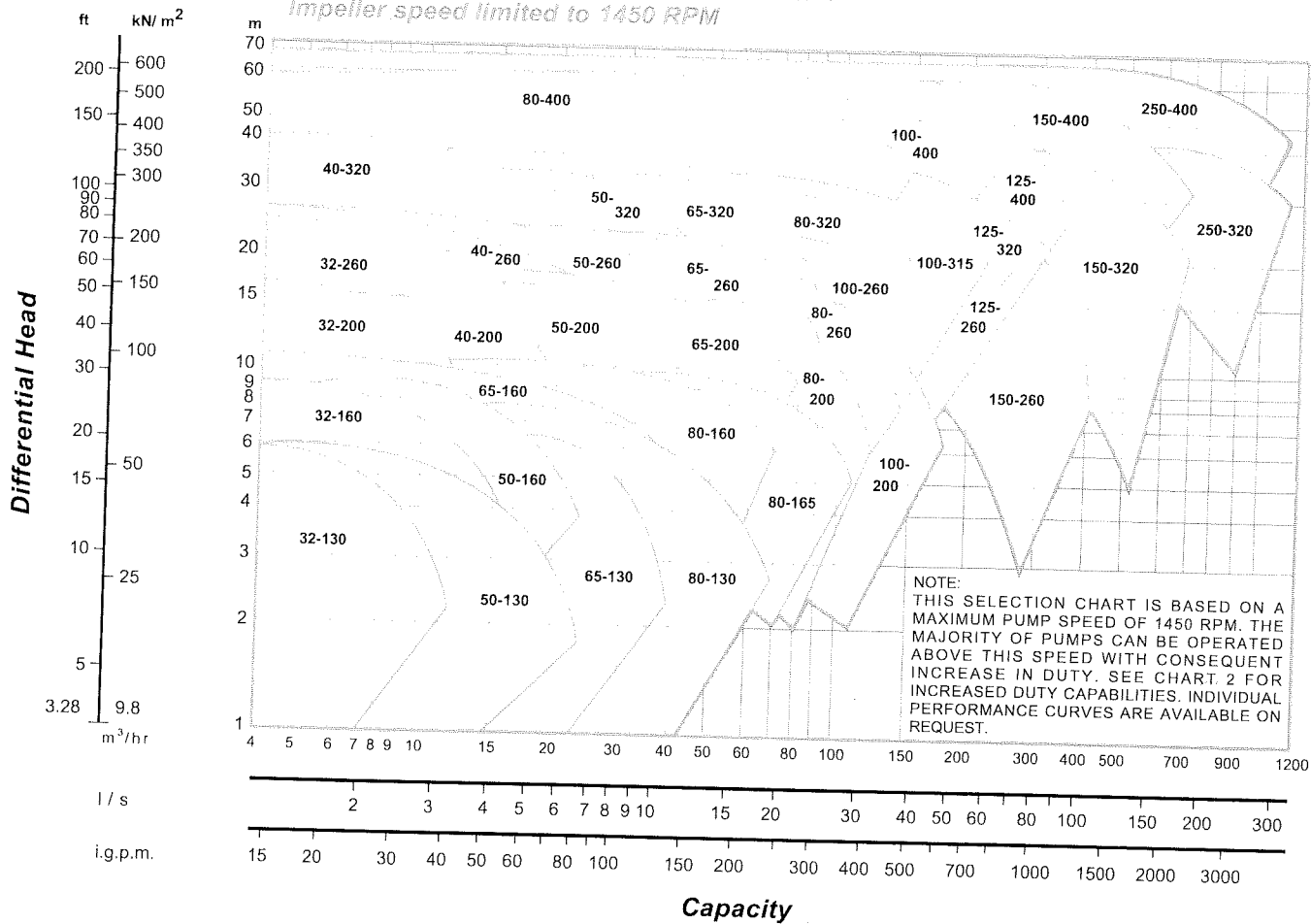
Veeline belt drive centrifugal pumps



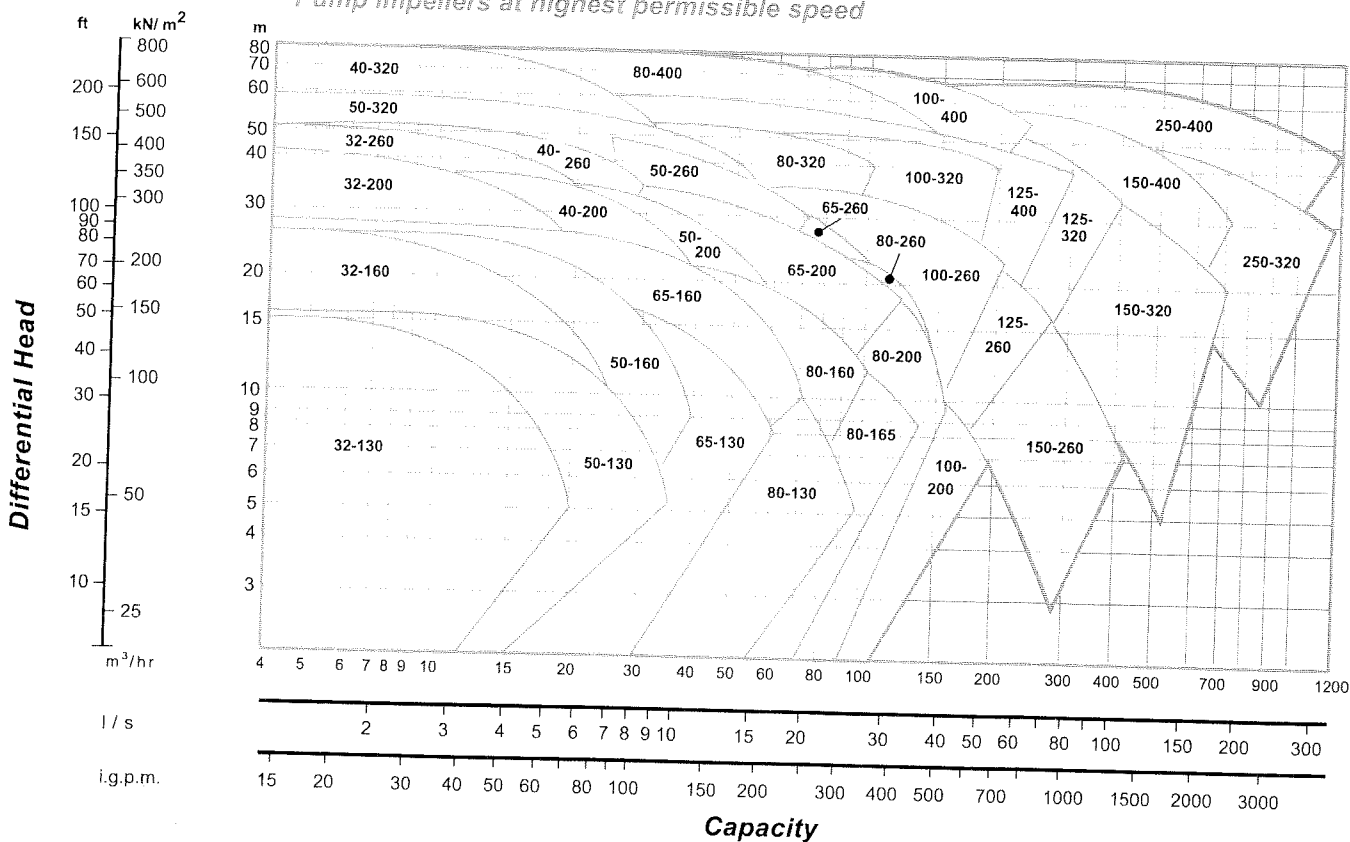
Type MB close coupled centrifugal pumps



Veepak Selection Chart 1 - Performance with Impeller speed limited to 1450 RPM



Veepak Selection Chart 2 - Performance with Pump impellers at highest permissible speed



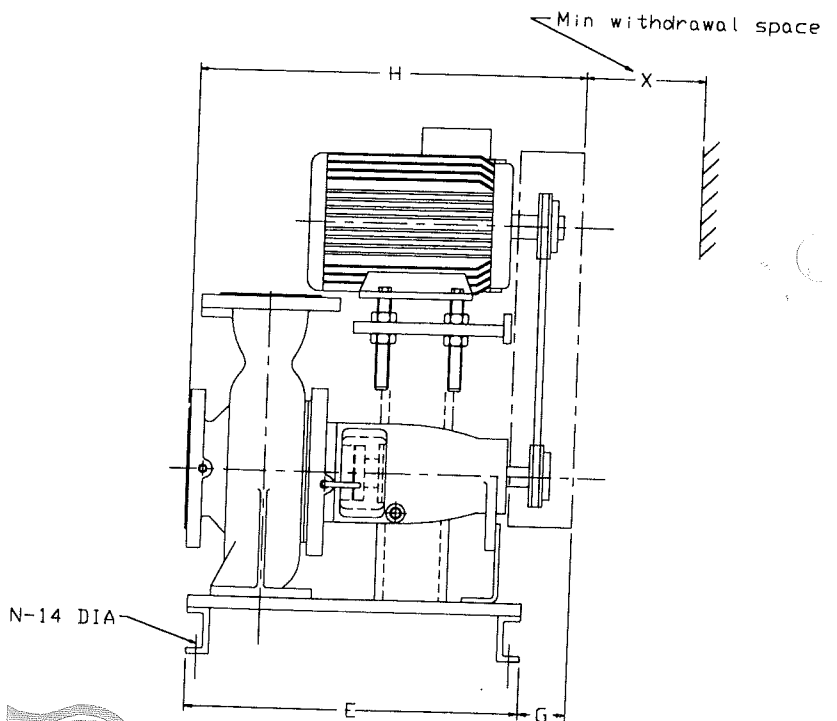
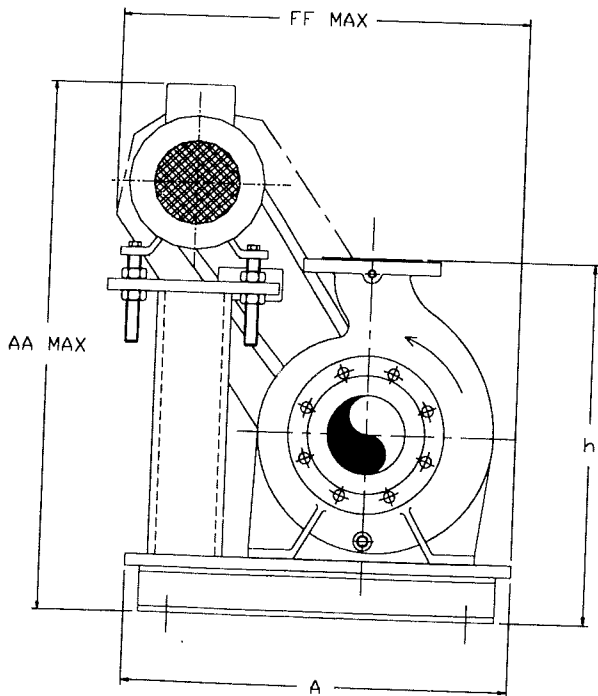
Dimensions

Pump Data

Motor and Baseplate data (based on maximum motor frame)

Pump Type	Inlet Size	Outlet Size	h	Max Motor Frame	kW Rating	Motor and Baseplate data (based on maximum motor frame)										App. Weight kgs.	
						N	A	E	G	H	AA	FF	X				
32-130			390	D90L	1.5												
32-160	50	32	410	D100L	3.0		460										
32-200			430	D132S	5.5	4		420	65	490	675	520					112
32-260			545	D132M	7.5		510				690	535	120				129
40-200			430	D132M	5.5		650	520	90	515	820	690					198
40-260	65	40	540	D160M	11.0	4	510	420	90	535	820	690	130				203
40-320			560	D180M	18.5		650	520	125	655	1020	830	160				298
50-130	65		390	D100L	2.2		460	420	65	490	690	535	120				127
50-160			410	D100L	3.0												135
50-200		50	410	D132M	7.5	4	510	420	90	535	805	690	140				220
50-260	80		545	D160L	15.0		650	520	125	680	1025	830	160				361
50-320			600														368
65-130	80		382	D112M	4.0		510	420	90	535	765	665	140				163
65-160			410	D132S	5.5	4					820	690					193
65-200		65	545	D160L	15.0		650	520	125	655	1025	830	160				335
65-260	100		570							680							356
65-320			660	D160M	11.0	8	780	580	105	680	1165	975	200				407
80-130	100		430	D112M	4.0		510	420	90	535	765	665	165				165
80-160			520	D132M	7.5					655	975	800	180				277
80-165			545			4	650	520	125				180				306
80-200		80	570	D160M	11.0					680	1025	830	170				323
80-260	125		600	D160L	15.0								170				371
80-320			695	D250M	75.0	6	905	580	190	733	1300	1127	220				521
80-400			735														636
100-200			600	D160M	11.0	4	650	520	125	680	1035	830	190				331
100-260	125	100	660	D180M	18.5	8	720	580	105	695	1215	995	200				414
100-320			685	D200L	75.0	6	905	580	190	748	1300	1127	220				586
100-400			825	D250M													700
125-260			735	D180L	22.0	8	720	580	105	625	1215	995	210				506
125-320	150	125	725	D250M	75.0	6	905	580	190	748	1300	1127	220				617
125-400			805														914
150-260			745	D250M	75.0		905	580	190	768	1300	1127	230				572
150-320	200	150	815	D315S	132.0	6	1200	790	205	925	1600	1500	260				1470
150-400			865														1650
250-320	300	250	1060	D315S	132.0	6	1200	790	205	990	1600	1500	315				2030

NOTE: Drip Proof, Super Silent, 'W' Series and Energy Efficient motors can also be supplied if required. 'D' Frame motors are Totally Enclosed Fan Cooled (IP54).



Head Office
 Baric Pumps Limited
 PO Box 51
 Manchester M12 5UF
 England
 Tel: (0161) 230 6744
 Fax: (0161) 230 6752



Finest in fluid handling

London Office
 Baric Pumps Limited
 PO Box 469
 Kingston-U-Thames
 KT1 2YH
 Tel: (0181) 336 2828
 Fax: (0181) 336 0808

Rights reserved to alter designs and specifications without prior notice