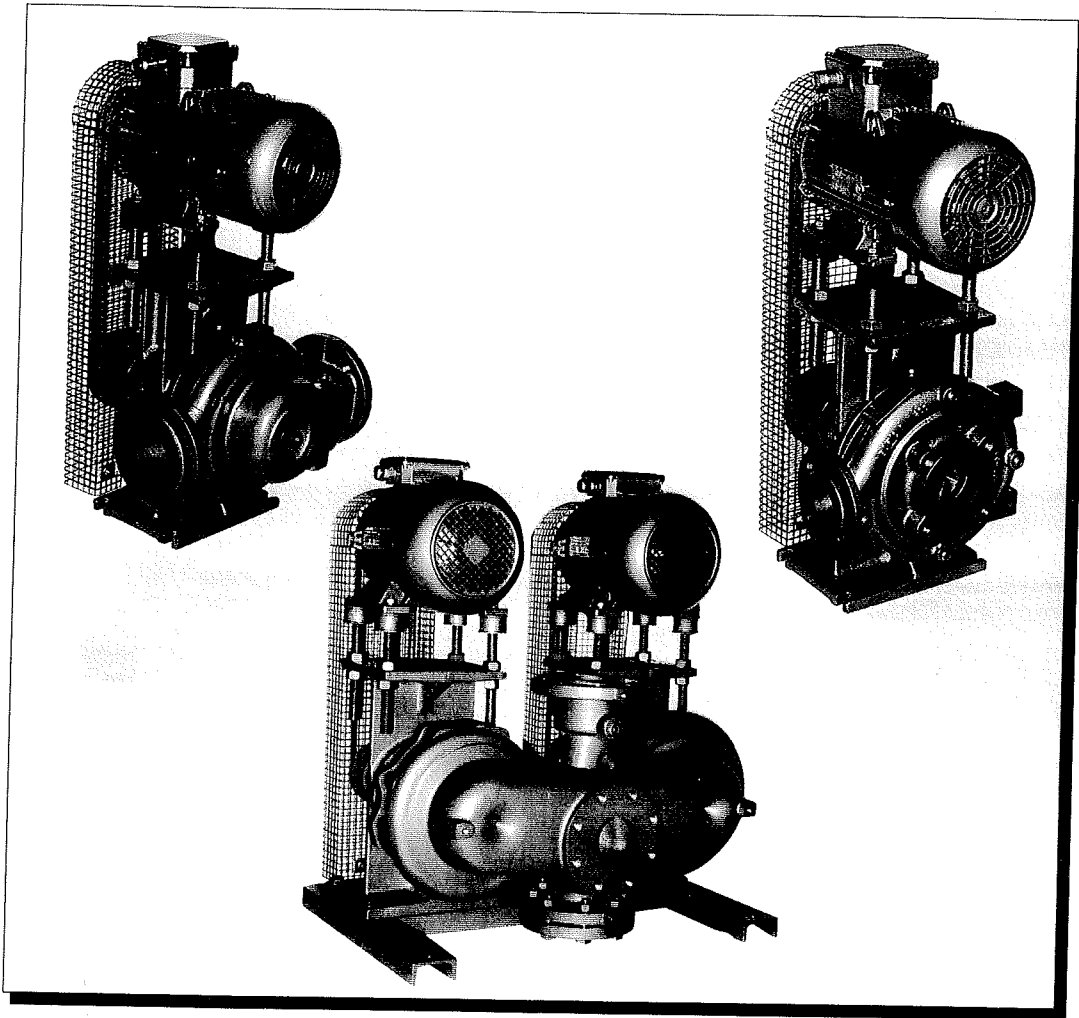


Veeline

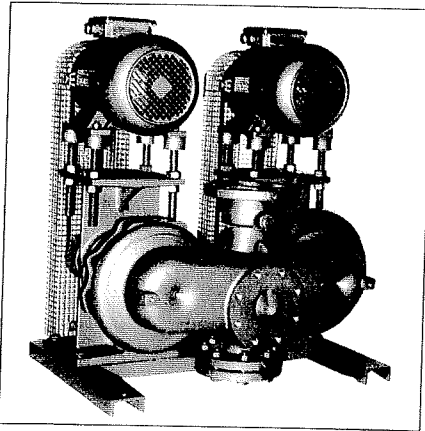
belt drive single pumps
belt drive twin pumps



Finest in fluid handling



Certificate No. 936649



TYPE VEELINE BELT DRIVEN PUMPS

Baric Pumps Limited Veeline, belt drive single stage overhead electric motor driven centrifugal pumps, designed for continuous service handling hot or cold non-abrasive liquids, in building services and general pumping applications.

The Veeline Twin pump combines the benefits of the twin head pump with those of the belt drive type whilst occupying minimum floor space. Fitted with a non return flap valve the Veeline Twin pump can be used for automatic duty/standard operation.

Proven Performance

Proven performance to the requirements of DOE standard specification (M&E) No.3. Performance results are from type testing in compliance with BS5316 Part 1/ISO 2548. Performance data based on clean cold water.

Back Pull Out

The compact vertical, back pull out arrangement allows the motor and pump assembly to be removed from the pump casing without disturbing pipework.

Mechanical shaft sealing is standard reducing routine maintenance by eliminating stuffing box attention.

Integral Belt Adjustment

Veeline standard pulley and belt kits are selected with generous service factor and taper-lock bushes for reliable positive drive. Integral adjustment for even belt tension and correct alignment ensures maximum service life and smooth running.

Selection Flexibility

Ideal for system load changes since the pump performance can be altered, by replacing the belt drive. It is suggested that pump speeds and electric motor ratings are selected to allow for changes in performance requirements. Pump casings can be 'handed' for optimum use of plant room space and pipework installations, especially beneficial to the Designer and Installer.

Operating Limits

Code	VL	VE	TVE	K	M
Liquid Temperature Range °C	Minus 10 to + 120		145	-10 to	130
Max. Operating Pressure bar	6/10	6/10	10	+ 120	Maximum
Ambient Temperature °C	40°C Maximum (at altitudes up to 1000m above sea level) Motor rated outputs will be reduced at higher ambient temperatures.				

Operating limits based on water, for other liquids consult Baric Pumps Limited.

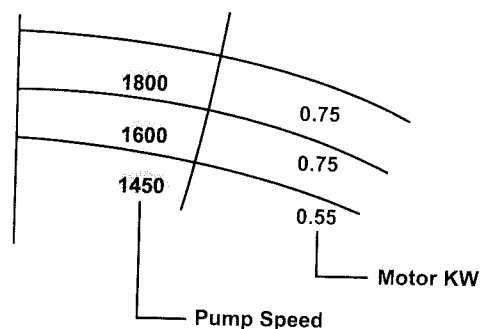
Materials of Construction

Part Item	Part Description	VL	VE	TVE	M	K
001	Casing			Cast Iron		Gunmetal
041	Seal Housing			BS1452 Gr 220		BS1400 LG2-C
021	Impeller	Gunmetal		Gunmetal		Gunmetal
		Noryl-GFN3		C.I.	Gunmetal	Noryl-GFN3
071	Shaft			Stainless Steel BS970 416 S29		
052	Mechanical Seal	Ceramic		Carbon		Ceramic
				Silicon Carbide		
				Ethylene Propylene		
084	Electric Motor	<ul style="list-style-type: none"> Totally enclosed fan ventilated Degrees of Protection - IP54 Class of Insulation - F (Class B Temperature Limits) Alternative Motor Specifications are available 				

Pump Coding

Variant Code		Veeline Casing Code	Pump Size	Motor Kw	Pump Speed RPM	Electricity Supply	
K	Gunmetal Construction	VL	In-Line Casing			S3	Three Phase
M	130°C Version	VE	End Suction Casing			S1	Single Phase
	145°C Version	TVE	Twin End Suction Casing			S3	Three Phase

Example

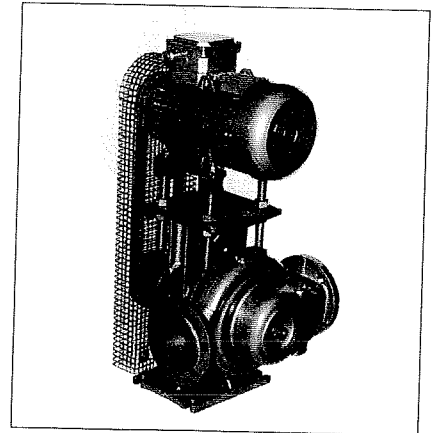
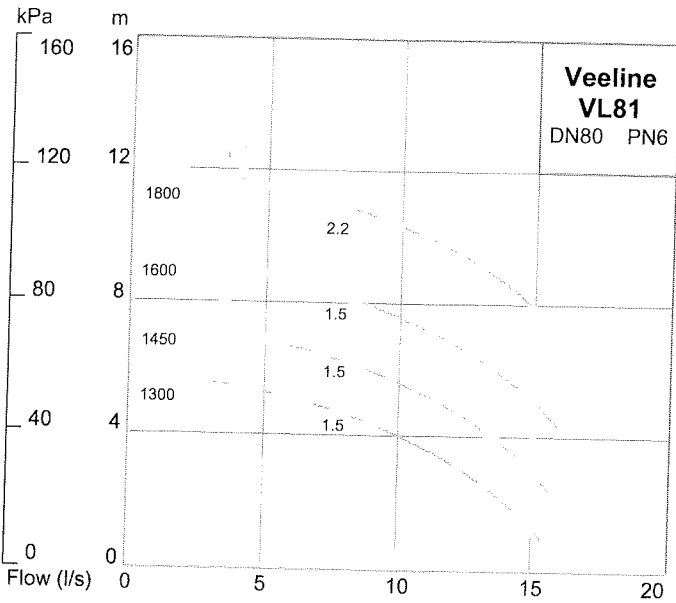
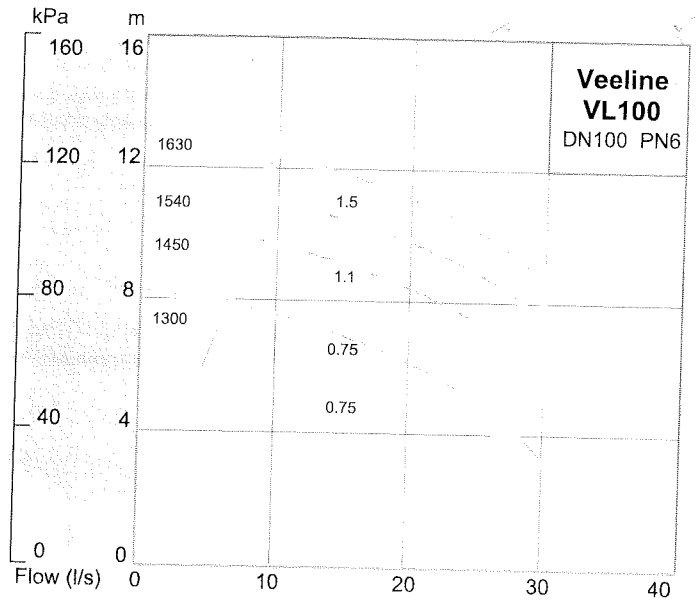
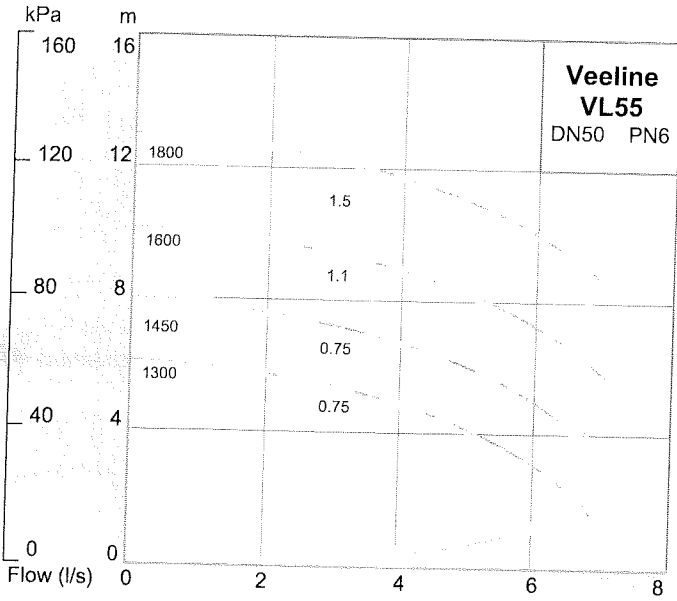
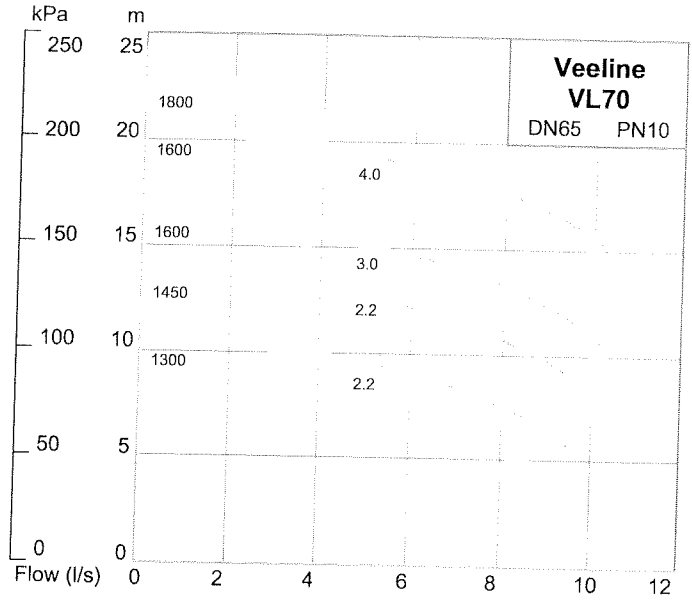
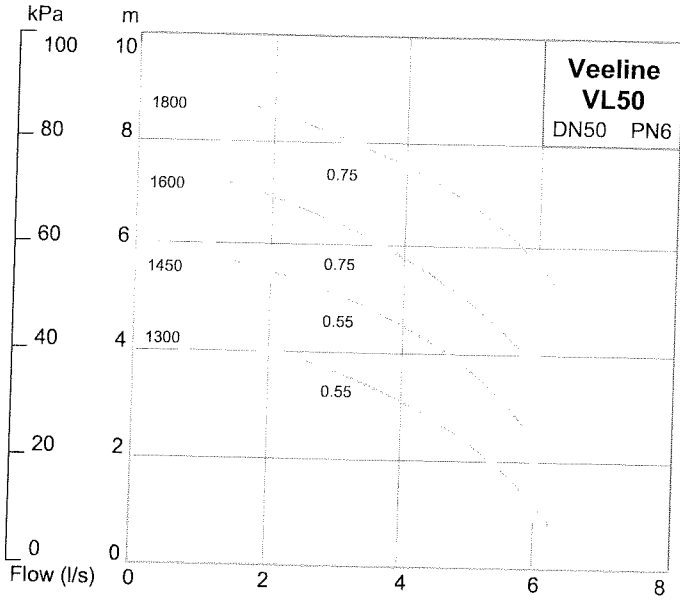


VL 50 - 0.75 - 1450 - S3

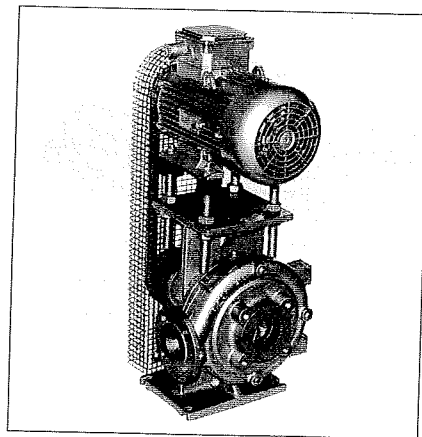
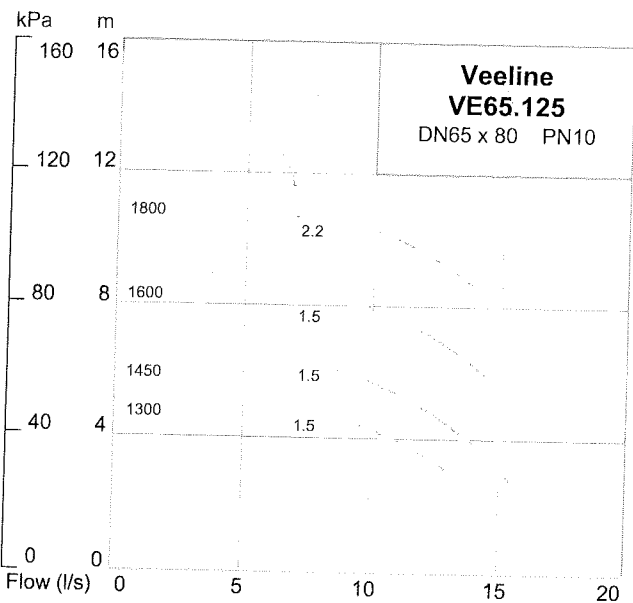
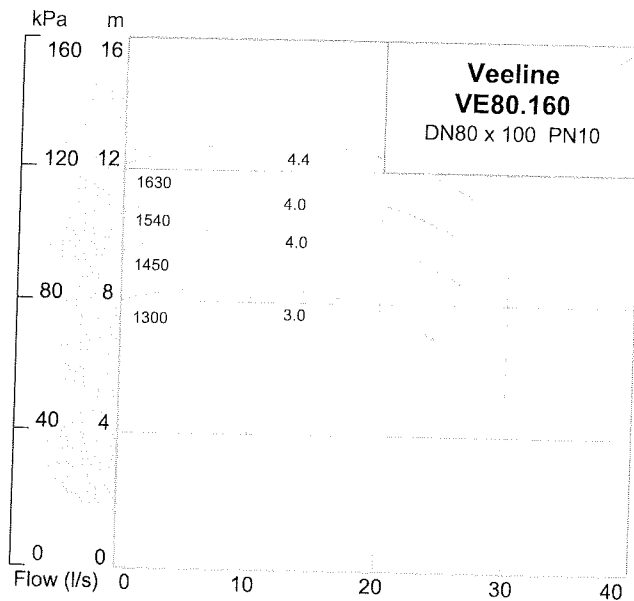
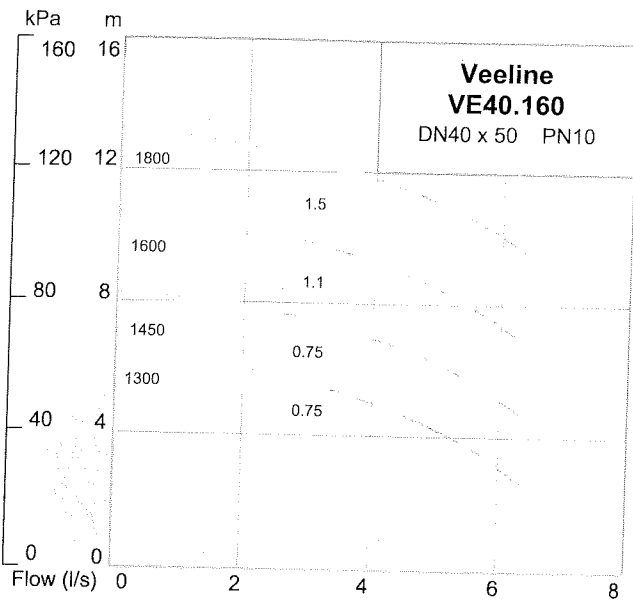
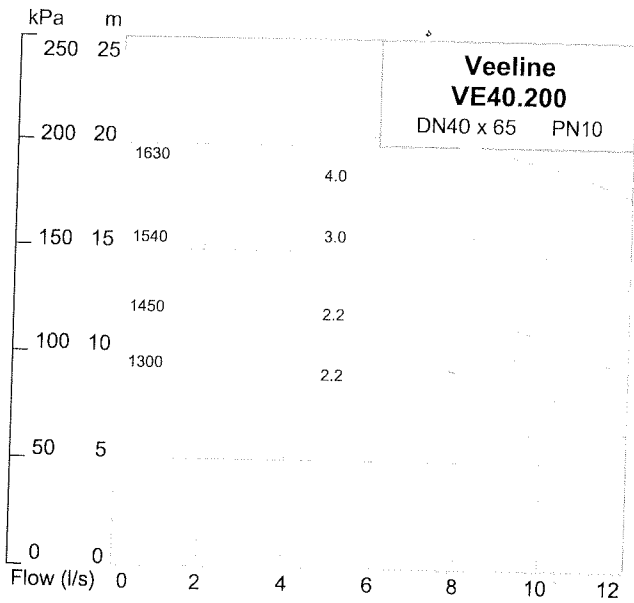
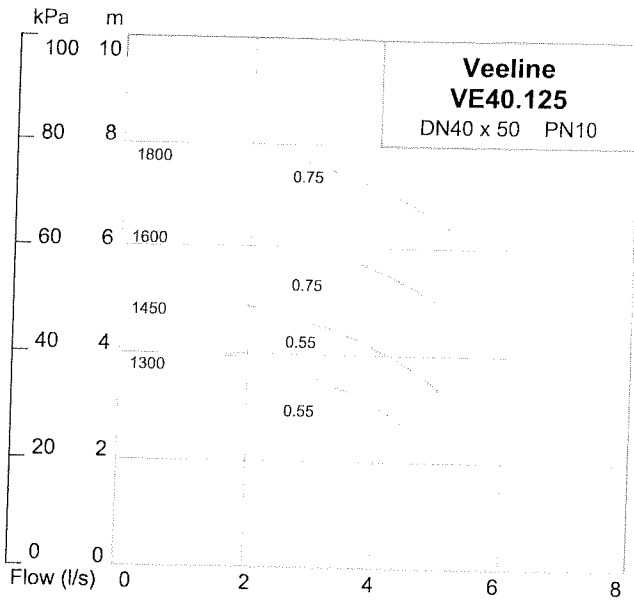
VE 40.125 - 0.75 - 1450 - S3

TVE 50 - 0.75 - 1450 - S3

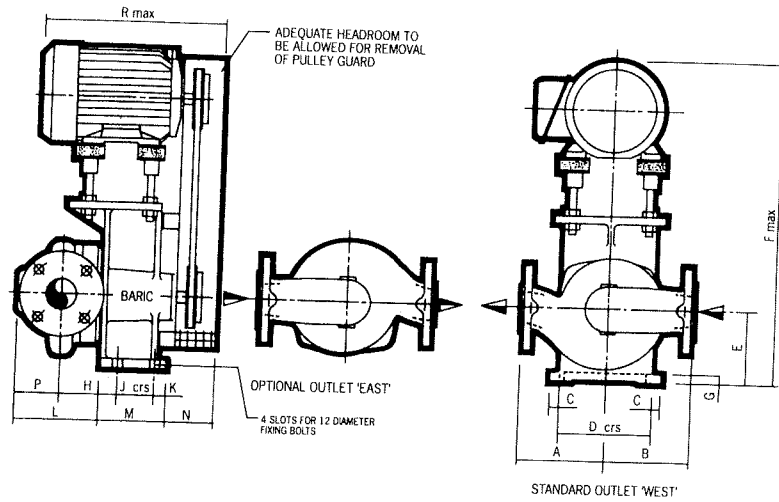
Performance Details



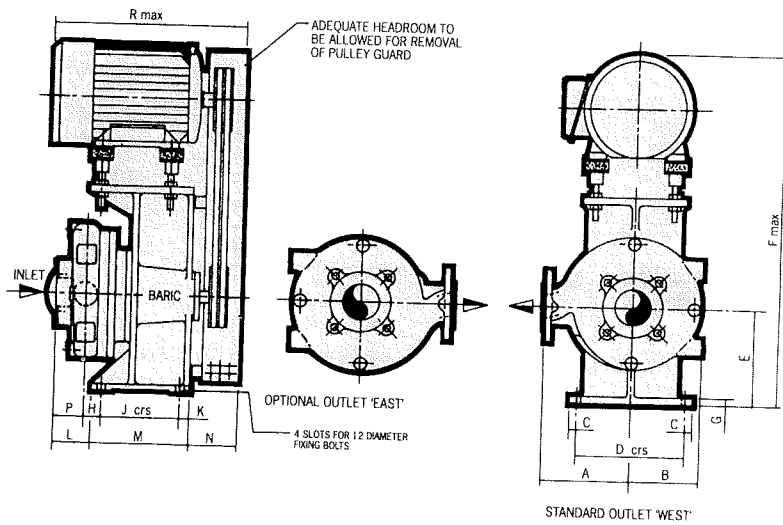
Performance Details



Type VL



Type VE



Veeline - type VL

Pump Size	Inlet & Outlet				Dimensions in millimetres															Wt kg
	Size		BS4504		A	B	C	D	E	F	G	H	J	K	L	M	N	P	R	
	Inlet	Outlet	PN6	PN10																
VL 50	50	50	•	○	140	140	15	150	120	520	15	102	60	20	157	110	85	85	320	44
VL 55	50	50	•	○	160	160	15	150	120	540	15	107	60	20	167	110	85	90	365	52
VL 70	65	65	•	•	205	210	15	220	200	740	15	35	160	20	125	200	105	110	400	105
VL 81	80	80	•	○	180	180	15	220	200	740	15	40	160	20	130	200	105	110	400	92
VL 100	100	100	•	○	225	270	15	220	200	740	15	40	160	20	170	200	105	150	400	115
<i>Veeline - type VE</i>																				
VE 40125	50	40	•		140	97	15	150	120	520	15	102	60	20	122	110	85	50	320	42
VE 40160	50	40	•		160	117	15	150	120	540	15	107	60	20	132	110	85	55	365	50
VE 40200	65	40	•		180	140	15	220	200	740	15	35	160	20	75	200	105	60	500	96
VE 65125	80	65	•		180	123	15	220	200	740	15	40	160	20	80	200	105	60	400	90
VE 80160	100	80	•		225	160	15	220	200	740	15	40	160	20	100	200	105	80	400	105

• Standard ○ Optional