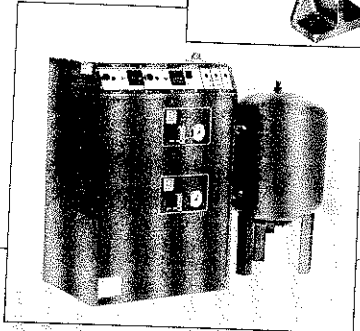
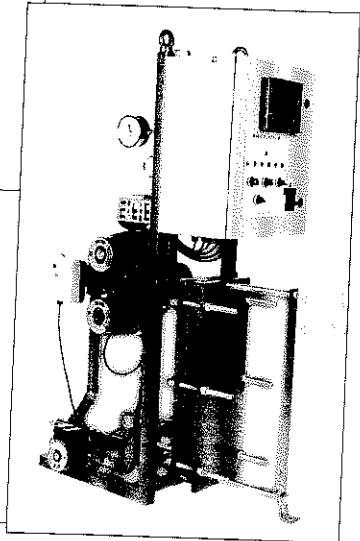
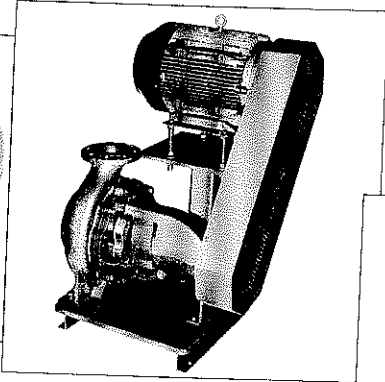
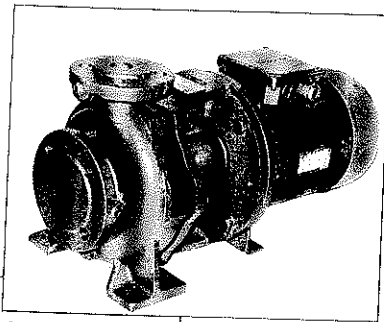
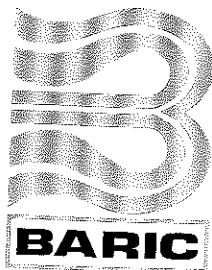
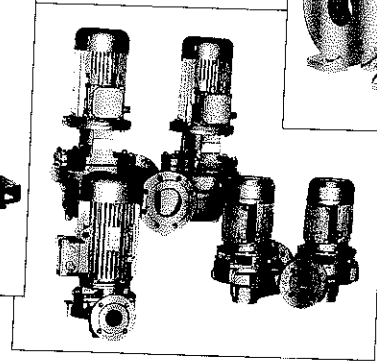
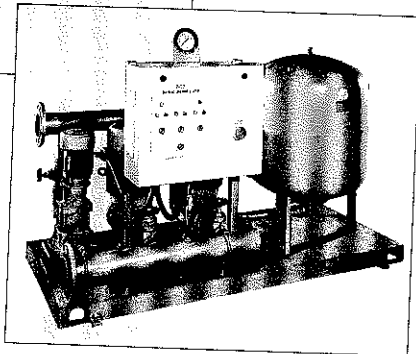
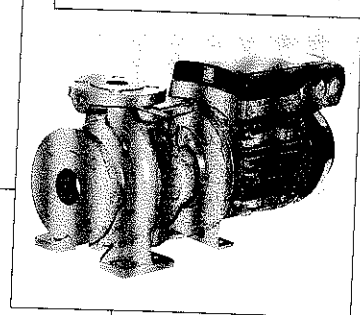
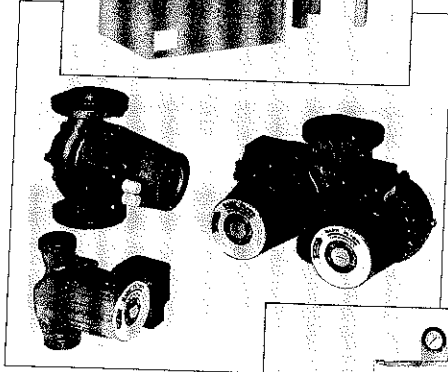


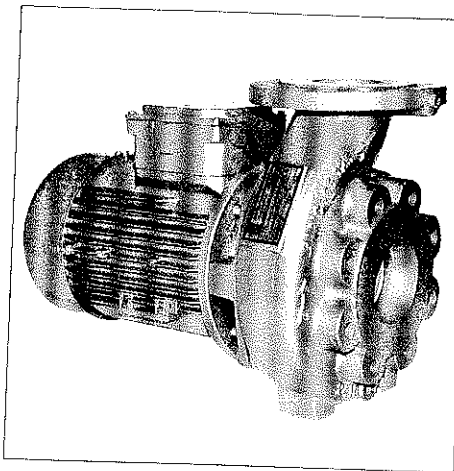
BARIC PUMPS



the
complete
solution



Finest in fluid handling



Type ME Close Coupled Pump

Single stage , end suction pump designed for continuous service handling hot or cold liquids and general purpose pumping of clean non abrasive applications. Designed in accordance with BS5257 for horizontal end-suction centrifugal pumps. Mechanical shaft seal as standard reduces routine maintenance by eliminating stuffing box attention.

Operating Limits

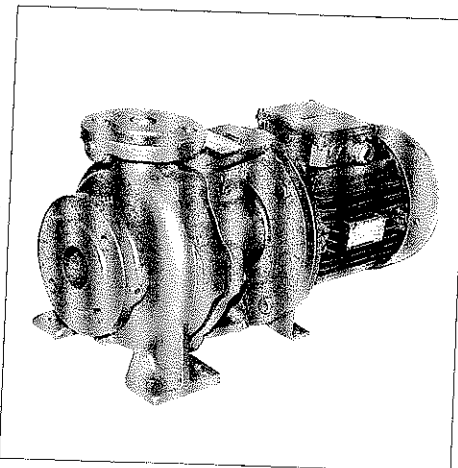
Temperature : minus 10°C to +120°C. **Pressure** : 6 bar including pump head. 10 bar option.

Materials of Construction

Cast iron bronze fitted, all bronze or all stainless steel.

Performance

1450 RPM : Heads up to 22 metres **Flow** up to 55 l/sec.
2900 RPM : Heads up to 57 metres **Flow** up to 82 l/sec.



Type MB Close Coupled Pump

Single stage , end suction pump designed for continuous service handling hot or cold liquids and general purpose pumping of clean non abrasive applications. Designed in accordance with BS5257 for horizontal end-suction centrifugal pumps. Mechanical shaft seal as standard reduces routine maintenance by eliminating stuffing box attention. Packed gland option.

Operating Limits

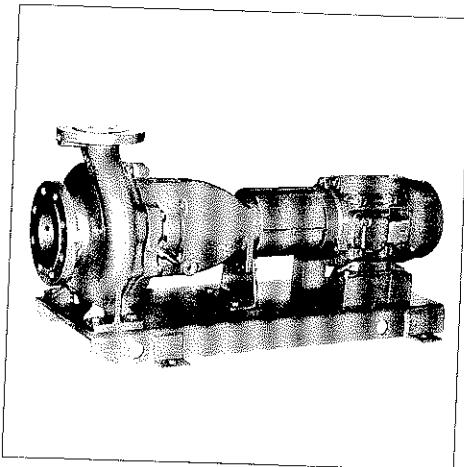
Temperature : 125°C up to 175°C with gland cooling.
Pressure : 10 bar (incl. pump head).

Materials of Construction

Cast iron body/pedestal, cast iron/gunmetal impeller, stainless steel shaft.

Performance

1450 RPM : Heads up to 70 metres **Flow** up to 350 l/sec.
2900 RPM : Heads up to 62 metres **Flow** up to 90 l/sec.



Type LB Long Coupled Pump

Single stage , end suction pump designed for continuous service handling hot or cold liquids and general purpose pumping of clean non abrasive applications. Designed in accordance with BS5257 for horizontal end-suction centrifugal pumps. Mechanical shaft seal as standard reduces routine maintenance by eliminating stuffing box attention. Fitted with non spacer type coupling (spacer type as option).

Operating Limits

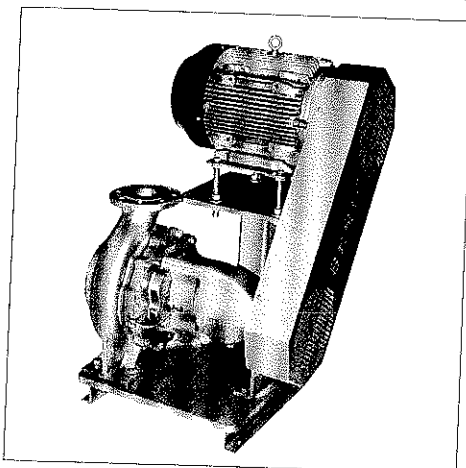
Temperature : 125°C up to 175°C with gland cooling.
Pressure : 16 bar (incl. pump head).

Materials of Construction

Cast iron body/pedestal, cast iron/gunmetal impeller, stainless steel shaft.

Performance

1450 RPM : Heads up to 100 metres **Flow** up to 800 l/sec.
2900 RPM : Heads up to 160 metres **Flow** up to 100 l/sec.



Type Veepak End Suction Belt Driven Pump

Single stage , end suction pump designed for continuous service handling hot or cold liquids and general purpose pumping of clean non abrasive applications. Designed in accordance with BS5257 for horizontal end-suction centrifugal pumps. Mechanical shaft seal as standard reduces routine maintenance by eliminating stuffing box attention. Belt drive allows for multiple choice of performance characteristics.

Operating Limits

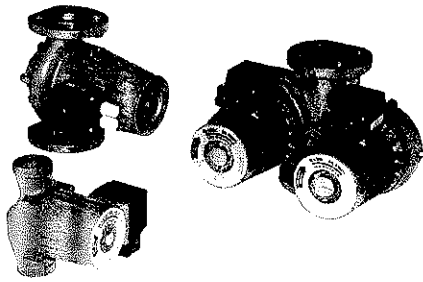
Temperature : 125°C up to 175°C with gland cooling. **Pressure** : 16 bar (incl. pump head).

Materials of Construction

Cast iron body/pedestal, cast iron/gunmetal impeller, stainless steel shaft.

Performance

1450 RPM : **Heads** up to 68 metres **Flow** up to 300 l/sec.
Maximum Speed : **Heads** up to 80 metres **Flow** up to 320 l/sec.



Type Thermopak Glandless In Line Pump

Flooded rotor, glandless in line circulators designed for continuous service in heating and secondary hot water service systems. Conforming to DOE standard specification (M&E) No.3 for low and medium temperature hot water heating systems. Sealed glandless design precision engineered for maintenance free service. Water lubricated carbon bearings and dynamically balanced engineered assembly ensures smooth, super quiet running. Top pull out of rotating assembly avoids disturbing pipework. Available as single, or twin version where two pumps are mounted within a common casing allowing for run and standby operation.

Operating Limits

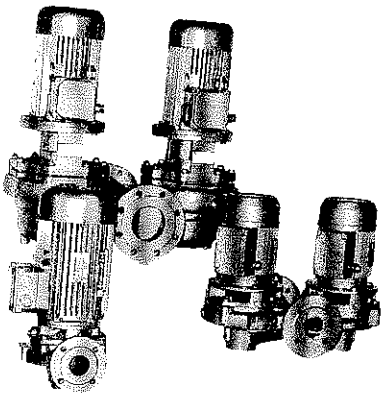
Temperature : up to 120°C. **Pressure** : 6 bar (including pump head). 10 bar option.

Materials of Construction

Cast iron and gunmetal versions available.

Performance

Heads up to 12 metres **Flow** up to 18 l/sec.



Type Linepak In Line Pump

Single stage, in line pump designed for continuous service handling hot or cold liquids and general purpose pumping of clean non abrasive applications. Conforming to DOE standard specification (M&E) No.3. Top pull out of rotating assembly avoids disturbing pipework. Available as single, or twin version where two pumps are mounted within a common casing allowing for run and standby operation. Mechanical shaft seal as standard reduces routine maintenance by eliminating stuffing box attention. Two speed versions are also available.

Operating Limits

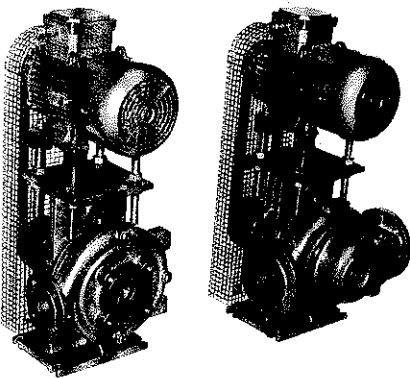
Temperature : up to 160°C. **Pressure** : up to 10 bar (incl. pump head).

Materials of Construction

Cast iron/gunmetal body/pedestal, Noryl/gunmetal impeller, stainless steel shaft.

Performance

1450 RPM : **Heads** up to 50 metres **Flow** up to 70 l/sec.
2900 RPM : **Heads** up to 90 metres **Flow** up to 50 l/sec.



Type Veeline Belt Driven Pump

Single stage, in line pump designed for continuous service handling hot or cold liquids and general purpose pumping of clean non abrasive applications. Conforming to DOE standard specification (M&E) No.3. Back pull out of rotating assembly avoids disturbing pipework. Mechanical shaft seal as standard reduces routine maintenance by eliminating stuffing box attention. Belt drive allows for pump performance alterations due to system load changes. Pumps can be totally in line or end suction type. Branches can be 'handed' for optimum use of plant room space.

Operating Limits

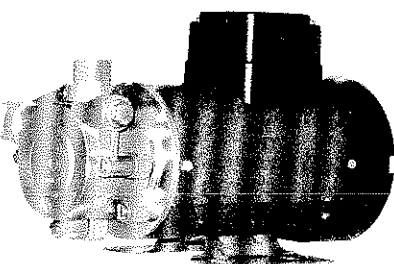
Temperature : up to 130°C. **Pressure** : up to 10 bar (incl. pump head).

Materials of Construction

Cast iron/gunmetal body/pedestal, Noryl/gunmetal impeller, stainless steel shaft.

Performance

Maximum Speed : **Heads** up to 22 metres
Flow up to 30 l/sec.



Type Peripak Close Coupled Regenerative Pump

Single stage pump designed for continuous service clean non abrasive liquids including general purpose pumping, brewing and booster applications. Pumps are designed with side entry and top discharge as standard. The impeller is a multivane type inherently balanced to give high head.

Spring loaded, self adjusting long life mechanical seals fitted as standard.

Operating Limits

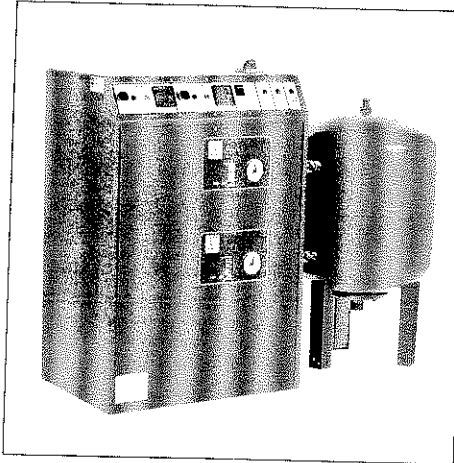
Temperature : 4°C up to 50°C with gland cooling. **Pressure** : 5 bar (incl. pump head).
Ambient Temperature : 40°C maximum.

Materials of Construction

Reinforced high performance engineering thermoplastic, stainless steel internals and shaft.

Performance

Heads up to 35 metres **Flow** up to 0.3 l/sec.



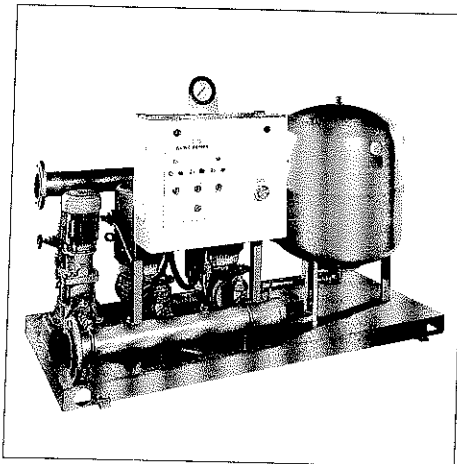
Type Expak Sealed Systems

Expak expansion vessels, pressurisers and ancillary components for pressurised sealed heating, cooling and water service systems. Designed to meet the requirements of DOE standard specification (M&E) No.3 for sealed diaphragm vessel systems.

Components can be supplied as factory assembled items or separate components to enable convenient location on site. Our factory assembled transfer pressurisation systems will accommodate higher expansion volumes whilst automatically maintaining the required system pressure within close limits. The Expak expansion vessels are constructed of welded carbon steel with a replaceable flexible diaphragm of "water in the bag" design, which acts as a permanent barrier to maintain separation between the system water and gas cushion.

Single or duty and standby pressuriser pumps can be supplied along with air vents and air separators to suit customer requirements.

All our pressurised systems are designed to suit the individual application.



Booster Systems

Combination base mounted, factory assembled, pressure booster supply systems to increase the water supply pressure in buildings whilst controlled automatically on water demand. These units are supplied factory assembled, piped, electrically wired and tested ready for site installation.

Applications

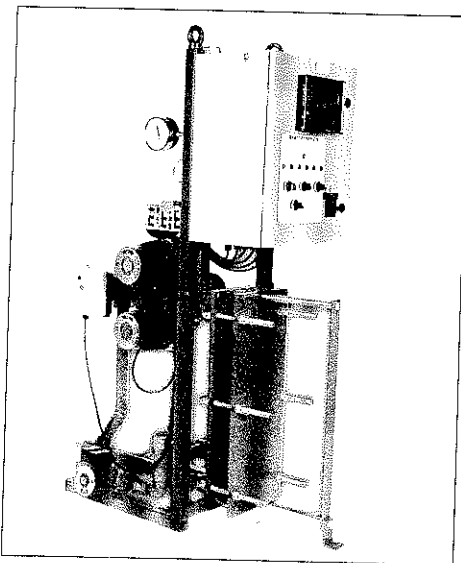
Indirect and direct boosting, boosted cold and hot water supply, hose reel systems, wet riser pumping systems.

Operation

Constant run, intermittent run, intermittent run including diaphragm vessel, pressure control, flow control and variable speed control.

Construction

Single or multi pump, integral controls, copper pipework, buffer or demand sized vessel to control pump running cycle, combination base mounted, integral low water protection option.



Platepak Hot Water Heat Transfer Systems

Our Platepak units incorporate 'APV Heat Transfer' plate heat exchangers - hence benefiting from the technology and flexibility from the manufacturer of the world's largest range of heat exchangers. Primary and secondary pumps can be of the single or twin in line type to suit. Primary pumps are mechanically sealed, secondary pumps are either glandless or mechanically sealed.

Benefits

Compact design, flexibility of design, negligible standing losses, ease of installation, quick response to demand, optional controller - compatible with Building Management Systems.

Applications

Apart from water, arrangements can be made suit seawater, steam, chlorinated water (swimming pools) and other applications (see head office).

Operating Limits

Temperature : 120°C (160°C optional). **Pressure** : 6 bar (16 bar optional).

Note: Detailed literature is available for all the equipment listed herein as well as our range of Submersible Pumps and Oil Transfer Sets. Please contact our head office for more information.



Finest in fluid handling



A Division of



Head Office:
33 AINES STREET
MANCHESTER
M12 5BU
Tel: 0161-230-6744
Fax: 0161-230-6752
www.barc-pumps.com

London Office
PO BOX 1110
CROYDON
CR9 4AU
Tel: 020-8684-5680
Fax: 020-8684-5678
www.barc-pumps.com