

## Series 42ST Motor Mounted Centrifugal Pumps

## SUBMITTAL

JOB: _____	REPRESENTATIVE: _____
_____	_____
ENGINEER: _____	ORDER NO: _____ DATE: _____
CONTRACTOR: _____	SUBMITTED BY: _____ DATE: _____
_____	APPROVED BY: _____ DATE: _____

PUMP DESIGN DATA			
NO. OF PUMPS:	TAG:		
CAPACITY:	USgpm (L/s)	HEAD:	ft. (m)
LIQUID:	VISCOSITY:		
TEMPERATURE:	°F (°C)	SPECIFIC GRAVITY:	

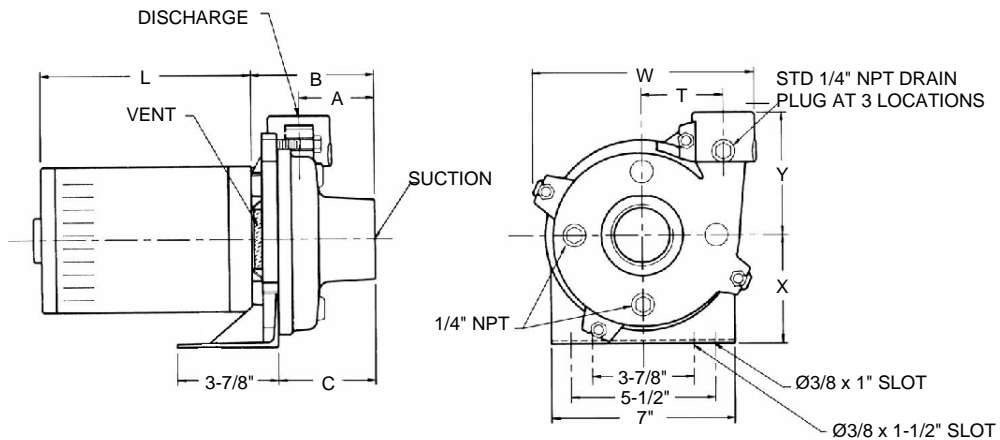
MOTOR DESIGN DATA	
HP:	RPM: 3600
FRAME SIZE:	ENCLOSURE: 50J
VOLTS:	HERTZ: 60 Hz PHASE: <input type="checkbox"/> 1 Phase <input type="checkbox"/> 3 Phase
EFFICIENCY:	Standard

MATERIALS OF CONSTRUCTION	
CONSTRUCTION	Bronze Fitted
IMPELLER	Ultem
CASING/VOLUTE	Cast Iron
O-RING	Viton
ADAPTER	Aluminum
SHAFT	416 Stainless Steel

MECHANICAL SEAL DESIGN DATA	
SEAL TYPE	21
INSERT	Carbon
SEAT	Ceramic
BELLOWS	Viton
L-CUP	Viton
RETAINER	Stainless steel
SPRING	Stainless steel

- FOR EXACT INSTALLATION DATA PLEASE WRITE FACTORY FOR CERTIFIED DIMENSIONS
- SEE PERFORMANCE CURVES ON PAGE 2

MAXIMUM PUMP OPERATING CONDITIONS	
WORKING PRESSURE	150 psi (1034 kPa)
OPERATING TEMPERATURE	275°F (135°C)

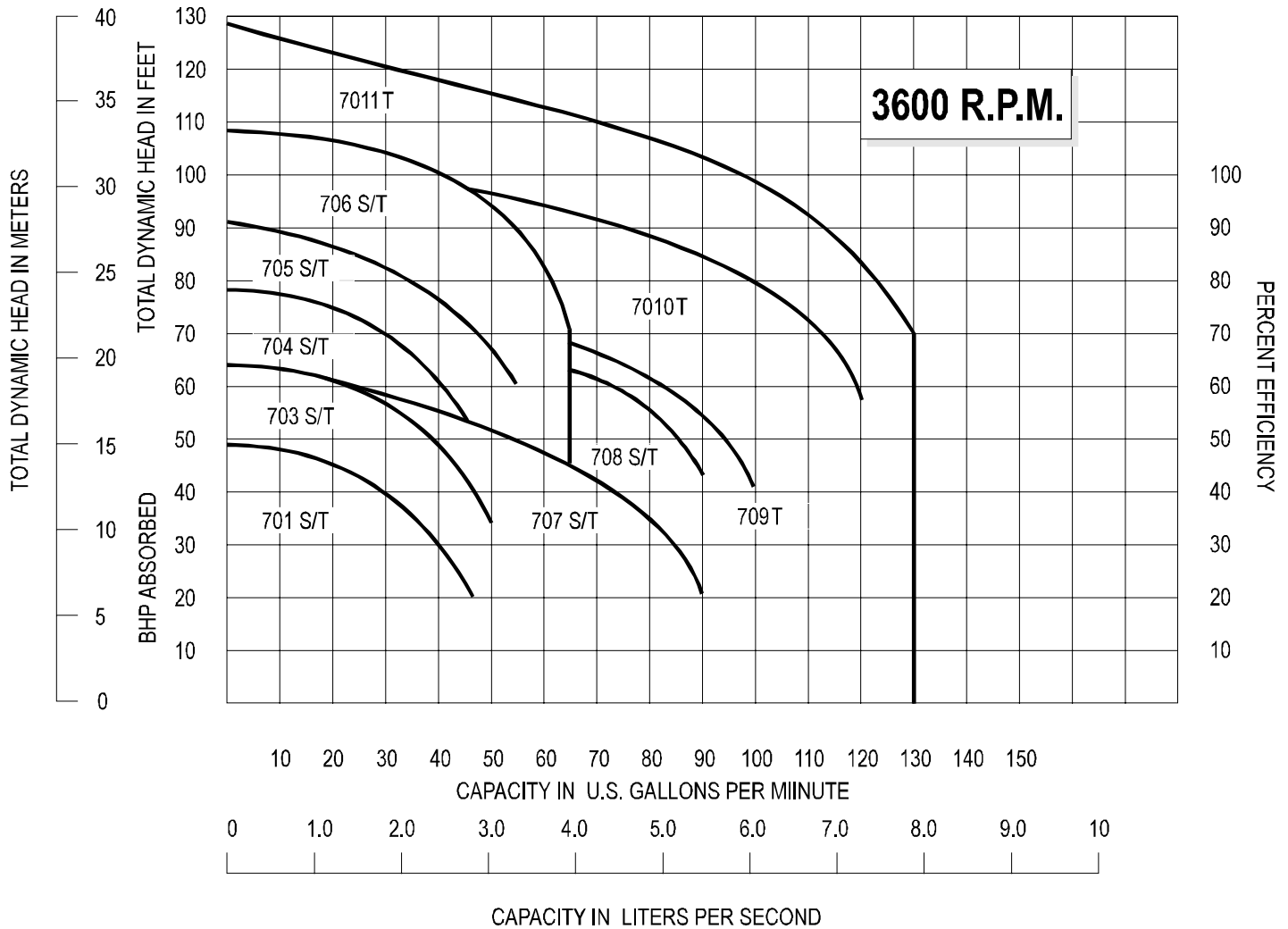


Model	Suction	Discharge	Impeller Size	hp	Dimensions								Weight
					A	B	C	L*	T	W	X	Y	
701**	1.25 (31)	1 (25)	3.5 (88)	1/3	2.9 (73)	4.8 (121)	3.8 (95)	8.8 (222)	3.1 (79)	8.3 (210)	4.2 (106)	4.8 (121)	36 (79)
702**	1.25 (31)	1 (25)	3.5 (88)	1/2	2.9 (73)	4.8 (121)	3.8 (95)	8.8 (222)	3.1 (79)	8.3 (210)	4.2 (106)	4.8 (121)	36 (79)
703**	1.25 (31)	1 (25)	4 (100)	3/4	2.9 (73)	4.8 (121)	3.8 (95)	8.8 (222)	3.1 (79)	8.3 (210)	4.2 (106)	4.8 (121)	38 (84)
704**	1.25 (31)	1 (25)	4.375 (109)	1	2.9 (73)	4.8 (121)	3.8 (95)	8.8 (222)	3.1 (79)	8.3 (210)	4.2 (106)	4.8 (121)	40 (88)
705**	1.25 (31)	1 (25)	4.857 (121)	1 1/2	2.9 (73)	4.8 (121)	3.8 (95)	8.8 (222)	3.1 (79)	8.3 (210)	4.2 (106)	4.8 (121)	49 (108)
706**	1.5 (38)	1.25 (31)	5 (125)	2	2.9 (73)	4.8 (121)	3.8 (95)	8.8 (222)	3.1 (79)	8.3 (210)	4.2 (106)	4.8 (121)	51 (113)
707**	2 (50)	1.5 (38)	4 (100)	1 1/2	2.9 (73)	4.8 (121)	3.8 (95)	8.8 (222)	3.1 (79)	8.5 (216)	4.2 (106)	4.8 (121)	53 (117)
708**	2 (50)	1.5 (38)	4.375 (109)	1 1/2	2.9 (73)	4.8 (121)	3.8 (95)	8.8 (222)	3.1 (79)	8.5 (216)	4.2 (106)	4.8 (121)	53 (117)
709T	2 (50)	1.5 (38)	4.5 (112)	2	2.9 (73)	4.8 (121)	3.8 (95)	8.8 (222)	3.1 (79)	8.5 (216)	4.2 (106)	4.8 (121)	56 (124)
710T	2 (50)	1.5 (38)	5 (125)	3	2.9 (73)	4.8 (121)	3.8 (95)	9.4 (238)	3.1 (79)	8.5 (216)	4.2 (106)	4.8 (121)	60 (132)
711T	2 (50)	1.5 (38)	5.5 (138)	5	2.9 (73)	4.8 (121)	3.8 (95)	11.4 (289)	3.1 (79)	8.5 (216)	4.2 (106)	4.8 (121)	65 (143)

Note: All dimensions are in inches (mm) and weights in lbs (kg)  
 \*Motors are available with open drip-proof enclosures only.  
 \*\*Add suffix to the end of the model number.  
 Suffix Number: "S" for 60 Hz / 1 phase / 115 V / 230 V (230 V only for 3 hp and 5 hp)  
 "T" for 60 Hz / 3 phase / 208-230 V / 460V

# ARMSTRONG

## PERFORMANCE CURVES



**S. A. Armstrong Limited**  
 23 Bertrand Avenue  
 Toronto, Ontario  
 Canada, M1L 2P3  
 T: (416) 755-2291  
 F (Main): (416) 759-9101

**Armstrong Pumps Inc.**  
 93 East Avenue  
 North Tonawanda, New York  
 U.S.A. 14120-6594  
 T: (716) 693-8813  
 F: (716) 693-8970

**Armstrong Holden Brooke Pullen**  
 Wenlock Way  
 Manchester  
 United Kingdom, M12 5JL  
 T: +44 (0) 161 223 2223  
 F: +44 (0) 161 220 9660



© S.A. Armstrong Limited 2008

*For Armstrong locations worldwide, please visit [www.armstrongpumps.com](http://www.armstrongpumps.com)*