

Series 4300 Vertical In-Line **8 x 8 x 15L** SUBMITTAL

JOB: _____	REPRESENTATIVE: _____
_____	_____
ENGINEER: _____	ORDER NO: _____ DATE: _____
CONTRACTOR: _____	SUBMITTED BY: _____ DATE: _____
_____	APPROVED BY: _____ DATE: _____

PUMP DESIGN DATA			
NO. OF PUMPS:			
TAG:			
CAPACITY:	USgpm (L/s)	HEAD:	ft. (m)
LIQUID:		VISCOSITY:	
TEMPERATURE:	°F (°C)	SPECIFIC GRAVITY:	

MOTOR DESIGN DATA			
HP:			RPM:
FRAME SIZE:	ENCLOSURE:		
VOLTS:	HERTZ: 60 Hz		PHASE:
EFFICIENCY: <input type="checkbox"/> Energy Eff		<input type="checkbox"/> NEMA Premium	
FLANGE SIZE:	SUCTION: 8" (200 mm)	DISCHARGE: 8" (200 mm)	

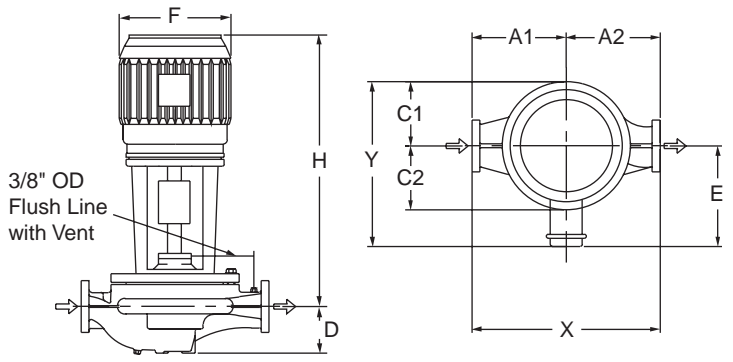
MATERIALS OF CONSTRUCTION					
FLANGE RATING	<input type="checkbox"/> ANSI -125 CAST IRON			<input type="checkbox"/> ANSI -250 DUCTILE IRON	
CONSTRUCTION	<input type="checkbox"/> BF	<input type="checkbox"/> AI	<input type="checkbox"/> AB	<input type="checkbox"/> DBF	<input type="checkbox"/> DI
CASING	CAST IRON	CAST IRON	BRONZE	DUCTILE IRON	DUCTILE IRON
IMPELLER	BRONZE	CAST IRON	BRONZE	BRONZE	CAST IRON
FLUSH LINE	COPPER	STEEL	COPPER	COPPER	STEEL
PUMP SHAFT	416 STAINLESS STEEL				
COUPLING	HIGH TENSILE ALUMINUM				
GASKET	CONFINED NON-ASBESTOS				

MECHANICAL SEAL DESIGN DATA
See File No. 43.50 for standard mechanical seal details as indicated below
Armstrong Seal Reference Number
<input type="checkbox"/> C1 (a) Other _____

SEAL DATA OPTIONS

OPTIONAL EQUIPMENT
SEE FILE NO. 43.50 FOR ENVIRONMENTAL ACCESSORIES

MAXIMUM PUMP OPERATING CONDITIONS	
125 lb. CAST IRON	250 lb. DUCTILE IRON
175 psig at 140°F (12 bars at 60°C)	375 psig at 100°F (26 bars at 38°C)
100 psig at 300°F (7 bars at 149°C)	275 psig at 500°F (19 bars at 260°C)
SEE FILE NO. 43.50 FOR MAXIMUM SEAL OPERATING CONDITIONS	



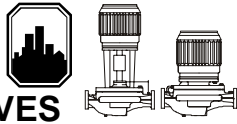
PUMP DIMENSIONS inches (mm)					
A1	A2	C1	C2	D	X
25.88 (657)	22.88 (581)	13.80 (351)	11.50 (292)	12.34 (313)	48.76 (1239)

- COUPLING GUARD (NOT SHOWN) IS SUPPLIED.
- TOLERANCE OF ±0.125" (±3 mm) SHOULD BE USED.
- FOR EXACT INSTALLATION DATA PLEASE WRITE FACTORY FOR CERTIFIED DIMENSIONS.
- SEE PERFORMANCE CURVES ON PAGE 2.

MOTOR HORSEPOWER					MAX. DIMENSIONS inches (mm)				ASSEMBLY WEIGHT*	
ODP		TEFC		Frame	ODP / TEFC			lbs. (kg)		
1800	1200	1800	1200		E	F	H	Y	ODP	TEFC
---	20	---	20	286	12.00 (305)	15.31 (389)	43.81 (1113)	25.80 (655)	1055 (479.0)	1095 (497.1)
---	25	---	25	324	13.91 (353)	17.00 (432)	46.87 (1190)	27.71 (704)	1245 (565.2)	1335 (606.1)
50	30	50	30	326	13.91 (353)	17.00 (432)	46.87 (1190)	27.71 (704)	1285 (583.4)	1415 (642.4)
60	40	60	40	364	16.44 (418)	19.03 (483)	47.06 (1195)	30.24 (768)	1425 (647.0)	1635 (742.3)
75	---	75	---	365	16.44 (418)	19.03 (483)	47.06 (1195)	30.24 (768)	1445 (656.0)	1685 (765.0)
100	---	---	---	404	16.19 (411)	17.63 (448)	48.12 (1222)	29.99 (762)	1595 (724.1)	---
125	---	100	---	405	17.69 (449)	21.41 (544)	51.68 (1313)	31.49 (800)	1645 (746.8)	2045 (928.4)
---	---	125	---	444	18.63 (473)	23.25 (591)	62.74 (1594)	32.43 (824)	---	2245 (1019.2)

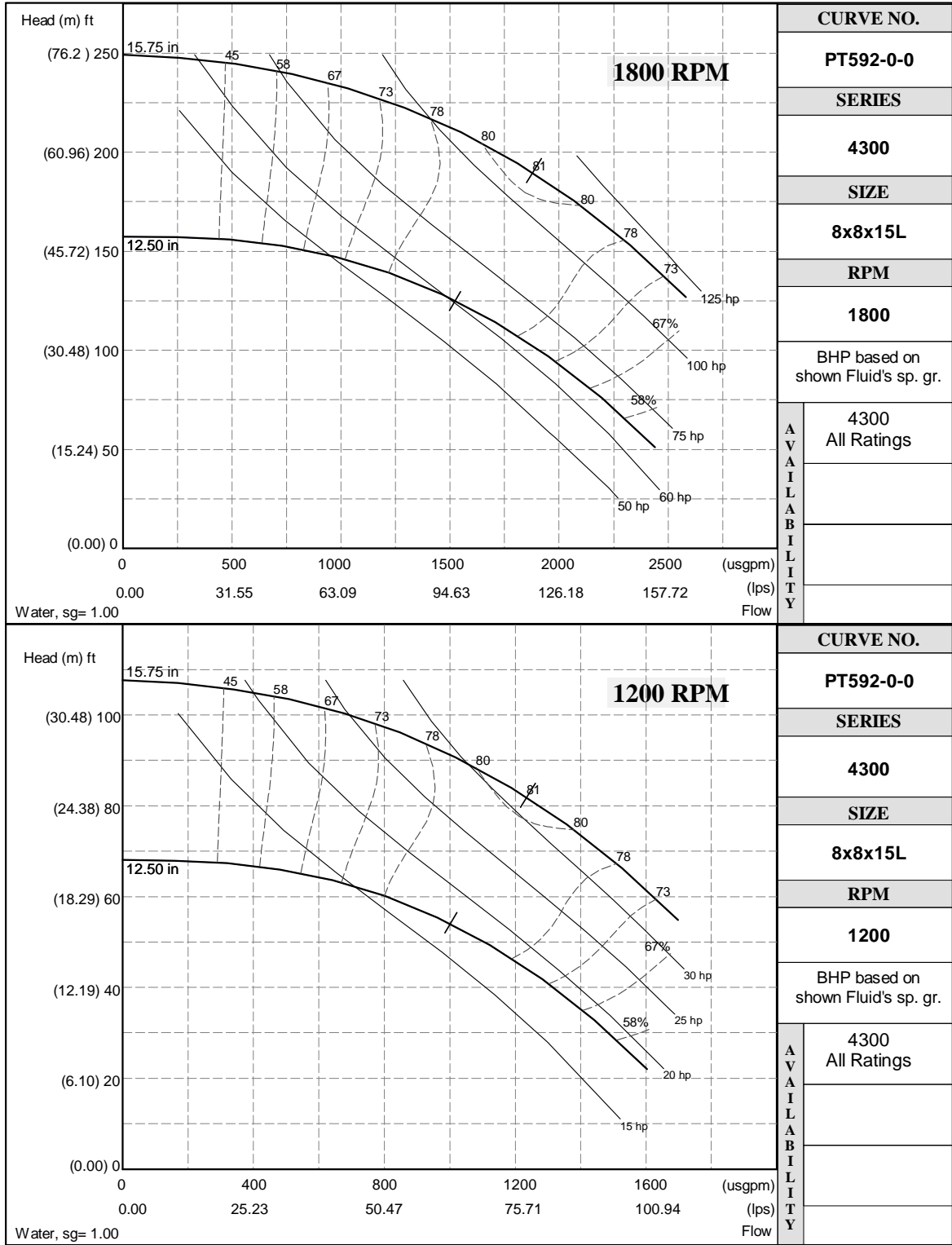
*Assembly weight combines pump and motor.

ARMSTRONG



PERFORMANCE CURVES

Performance Guaranteed Only At Operating Point Indicated
 CURVE SHOWN FOR CLEAR, COLD WATER - SP. GR. 1.0



AVAILABLE IN ALL COUNTRIES	CURVE NO.	
	PT592-0-0	
	SERIES	
	4300	
	SIZE	
	8x8x15L	
	RPM	
	1800	
	BHP based on shown Fluid's sp. gr.	
	4300 All Ratings	

AVAILABLE IN ALL COUNTRIES	CURVE NO.	
	PT592-0-0	
	SERIES	
	4300	
	SIZE	
	8x8x15L	
	RPM	
	1200	
	BHP based on shown Fluid's sp. gr.	
	4300 All Ratings	

S. A. Armstrong Limited
 23 Bertrand Avenue
 Toronto, Ontario
 Canada, M1L 2P3
 T: (416) 755-2291
 F (Main): (416) 759-9101

Armstrong Pumps Inc.
 93 East Avenue
 North Tonawanda, New York
 U.S.A. 14120-6594
 T: (716) 693-8813
 F: (716) 693-8970

Armstrong Holden Brooke Pullen
 Wenlock Way
 Manchester
 United Kingdom, M12 5JL
 T: +44 (0) 1612 232223
 F: +44 (0) 1612 209660



© S.A. Armstrong Limited 2008

For Armstrong locations worldwide, please visit www.armstrongpumps.com