

PARTS LIST

SERIES 4030

BASE MOUNTED PUMP

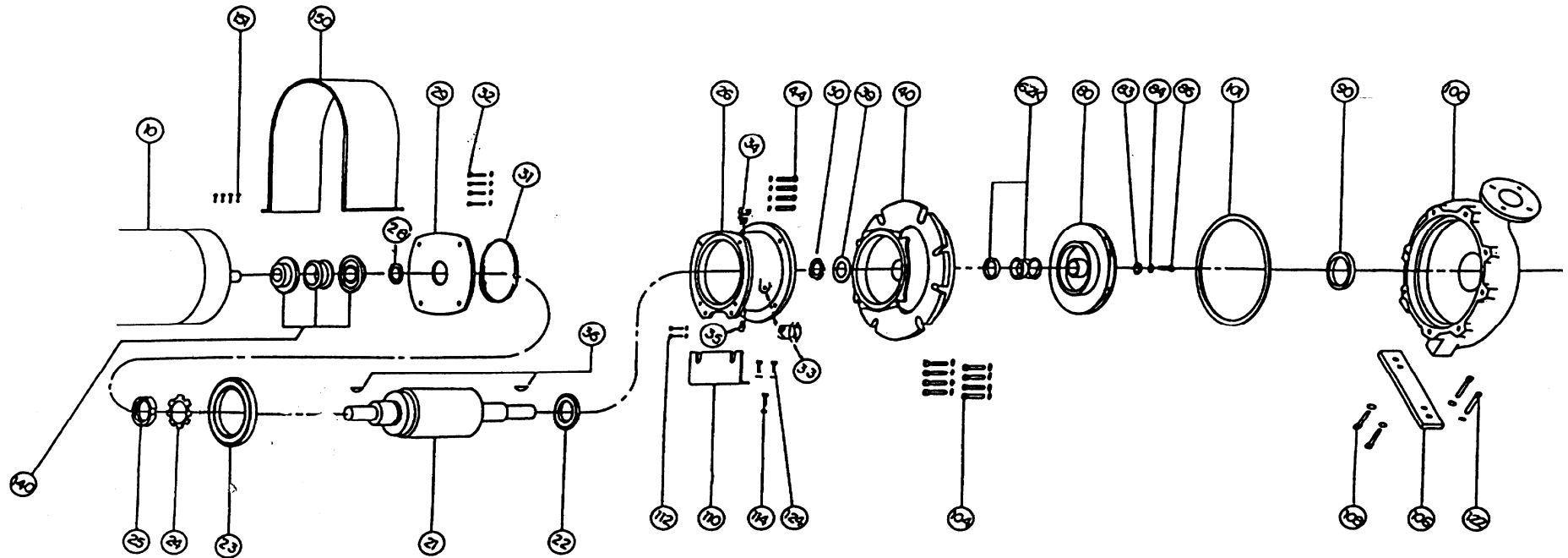
CENTERLINE DISCHARGE
"S" DESIGNATION

1 5/8" IMPELLER BORE -- 2 1/8" MECHANICAL SEAL

NOTE:	IP55 (TEFV)	-	-	-	-	-	-	-	-	-	-	-	-	-	-	-	-	-	-	-
Please Read	MOTOR kW	45				55	75					75				90		110		
Comments	950 RPM	-	-	-	-	-	-	-	-	-	-	-	-	-	-	-	-	-	-	-
for Important	IP55 (TEFV)	-	75	-	110	-	-	90	-	-	132	-	-	110	-	-	-	132	-	-
Details regarding	MOTOR kW		75					90			110			110			132		160	
IEC kW/RPM	1450 RPM	-	-	-	-	-	-	-	-	-	-	-	-	-	-	-	-	-	-	-
and IEC	IP55 (TEFV)	-	-	75	-	-	-	90	-	-	132	-	-	110	-	-	-	-	-	132
Shaft Details.	MOTOR kW			75				90			110			110					132	
	2945 RPM	-	-	-	-	-	-	-	-	-	-	-	-	-	-	-	-	-	-	-
	IEC Shaft dia/fit (mm)	75	m6	65	m6	75		m6	65			m6	80	m6	65	m6	80		m6	65
	IEC F w x GD h Key/length (mm)	20x12	125	18x11	126	20x12	125	18x11				126	22x14	155	18x11	126	22x14		155	18x11
PUMP SIZE	IEC MOTOR FRAME No.>>>	2	2	2	2	2	2	2	2	2	2	2	3	3	3	3	3	3	3	3
VVVVVVVV		8	8	8	8	8	8	8	8	8	8	8	1	1	1	1	1	1	1	1
		0	0	0	0	0	0	0	0	0	0	5	5	5	5	5	5	5	5	5
		S	S	S	S	M	M	M	M	M	M	S	S	S	S	M	M	M	M	M
25-150	1-1/2x1x6	-	-	-	-	-	-	-	-	-	-	-	-	-	-	-	-	-	-	-
40-150	3x1-1/2x6	-	-	-	-	-	-	-	-	-	-	-	-	-	-	-	-	-	-	-
50-150	3x2x6	-	-	-	-	-	-	-	-	-	-	-	-	-	-	-	-	-	-	-
65-150	3x2-1/2x6	-	-	-	-	-	-	-	-	-	-	-	-	-	-	-	-	-	-	-
80-150	4x3x6	-	-	-	-	-	-	-	-	-	-	-	-	-	-	-	-	-	-	-
150-150	6x6x6	-	-	-	-	-	-	-	-	-	-	-	-	-	-	-	-	-	-	-
25-200	1-1/2x1x8	-	-	-	-	-	-	-	-	-	-	-	-	-	-	-	-	-	-	-
40-200	3x1-1/2x8	-	-	-	-	-	-	-	-	-	-	-	-	-	-	-	-	-	-	-
50-200	3x2x8	-	-	-	-	-	-	-	-	-	-	-	-	-	-	-	-	-	-	-
65-200	3x2-1/2x8	-	-	-	-	-	-	-	-	-	-	-	-	-	-	-	-	-	-	-
80-200	4x3x8 +	-	-	-	-	-	-	-	-	-	-	-	-	-	-	-	-	-	-	-
100s-200	5x4x8W	-	-	-	-	-	-	-	-	-	-	-	-	-	-	-	-	-	-	-
100-200	6x4x8W	-	-	-	-	-	-	-	-	-	-	-	-	-	-	-	-	-	-	-
125-200	6x5x8	-	-	-	-	-	-	-	-	-	-	-	-	-	-	-	-	-	-	-
200-200	8x8x8	-	-	-	-	-	-	-	-	-	-	-	-	-	-	-	-	-	-	-
25-250	2x1x10	-	-	-	-	-	-	-	-	-	-	-	-	-	-	-	-	-	-	-
40-250	3x1-1/2x10	-	-	-	-	-	-	-	-	-	-	-	-	-	-	-	-	-	-	-
50-250	3x2x10	-	-	-	-	-	-	-	-	-	-	-	-	-	-	-	-	-	-	-
65-250	3x2-1/2x10	-	-	-	-	-	-	-	-	-	-	-	-	-	-	-	-	-	-	-
80-250	4x3x10	-	-	-	-	-	-	-	-	-	-	-	-	-	-	-	-	-	-	-
100s-250	5x4x10	-	-	M HD	-	-	-	-	-	-	-	-	-	-	-	-	-	-	-	-
100-250	6x4x10	-	-	M HD	-	-	-	-	-	-	-	-	-	-	-	-	-	-	-	-
125-250	6x5x10	-	-	-	-	-	-	-	-	-	-	-	-	-	-	-	-	-	-	-
150-250	8x6x10W	-	-	-	-	-	-	-	-	-	-	-	-	-	-	-	-	-	-	-
80-290	4x3x11-1/2	-	-	-	-	-	-	-	-	-	-	-	-	-	-	-	-	-	-	-
100-290	5x4x11-1/2	-	-	-	-	-	-	-	-	-	-	-	-	-	-	-	-	-	-	-
125-290	6x5x11-1/2	-	-	-	-	-	-	-	-	-	-	-	-	-	-	-	-	-	-	-
150-290	8x6x11-1/2	-	-	-	-	-	-	-	-	-	-	-	-	-	-	-	-	-	-	-
40-330	3x1-1/2x13	-	-	-	-	-	-	-	-	-	-	-	-	-	-	-	-	-	-	-
50-330	3x2x13	-	-	-	-	-	-	-	-	-	-	-	-	-	-	-	-	-	-	-
80-330	4x3x13+	-	-	-	-	-	-	-	-	-	-	-	-	-	-	-	-	-	-	-
80-330L	4x3x13L	-	-	-	-	-	-	-	-	-	-	-	-	-	-	-	-	-	-	-
100-330	6x4x13	-	-	-	-	-	-	-	-	-	-	-	-	-	-	-	-	-	-	-
150-330	8x6x13	-	-	-	-	-	-	-	-	-	-	-	-	-	-	-	-	-	-	-
200-330	10x8x13	-	L	-	-	-	-	-	-	-	-	-	-	-	-	-	-	-	-	-
150-375	8x6x15	-	L	-	-	-	-	-	-	-	-	-	-	-	-	-	-	-	-	-
200-375	10x8x15	-	L	-	-	-	-	-	-	-	-	-	-	-	-	-	-	-	-	-
LEGEND	DESCRIPTION	IMPELLER BORE				MECHANICAL SEAL SIZE				LUBRICATION				LUBE OPTIONS						
S	Small Bearing frame	7/8" (0.875")				1-1/4" (1.25")				Permanently Greased				Regrease, Oil						
M	Medium Bearing frame	1-1/8" (1.125")				1-5/8" (1.625")				Regrease				Oil						
MHD*	Medium Heavy-Duty Bearing frame	1-1/8" (1.125")				1-5/8" (1.625")				Oil										
L	Large Bearing frame	2-1/8" (2.125")				2-1/8" (2.125")				Oil										
MHD	Large Heavy-duty Bearing frame	2-1/8" (2.125")				2-1/8" (2.125")				Oil										

NOTE:	IP55 (TEFV)	-	-	-	-	-	-	-	-	-	-	-	-	-	-	-	-	-	-	-	-
Please Read	MOTOR kW		132					160	200	250								315			
Comments	950 RPM	-	-	-	-	-	-	-	-	-	-	-	-	-	-	-	-	-	-	-	-
for Important	IP55 (TEFV)	-	-	-	-	-	-	-	-	-	-	-	-	-	-	-	-	-	-	-	-
Details regarding	MOTOR kW			185	200							250	315	355				400			
IEC kW/RPM	1450 RPM	-	-	-	-	-	-	-	-	-	-	-	-	-	-	-	-	-	-	-	-
and IEC	IP55 (TEFV)	-	-	-	-	-	-	-	-	-	-	-	-	-	-	-	-	-	-	-	-
Shaft Details.	MOTOR kW	160				185	200								250	315	355			400	
	2945 RPM	-	-	-	-	-	-	-	-	-	-	-	-	-	-	-	-	-	-	-	-
	IEC Shaft dia/fit (mm)	m6	85		m6	65	m6	100						m6	85		m6	100		85	m6
	IEC F w x GD h Key/length (mm)	126	22x14		155	18x11	126	22x14							18x11			22x14		18x11	
PUMP SIZE	IEC MOTOR FRAME No.>>>	3	3	3	3	3	3	3	3	3	3	3	3	3	3	3	3	3	3	3	3
VVVVVVVV		1	1	1	1	1	1	5	5	5	5	5	5	5	5	5	5	5	5	5	5
		5	5	5	5	5	5	5	5	5	5	5	5	5	5	5	5	5	5	5	5
		M	L	L	L	L	L	M	M	M	M	M	M	M	M	M	L	L	L	L	L
25-150	1-1/2x1x6	-	-	-	-	-	-	-	-	-	-	-	-	-	-	-	-	-	-	-	-
40-150	3x1-1/2x6	-	-	-	-	-	-	-	-	-	-	-	-	-	-	-	-	-	-	-	-
50-150	3x2x6	-	-	-	-	-	-	-	-	-	-	-	-	-	-	-	-	-	-	-	-
65-150	3x2-1/2x6	-	-	-	-	-	-	-	-	-	-	-	-	-	-	-	-	-	-	-	-
80-150	4x3x6	-	-	-	-	-	-	-	-	-	-	-	-	-	-	-	-	-	-	-	-
150-150	6x6x6	-	-	-	-	-	-	-	-	-	-	-	-	-	-	-	-	-	-	-	-
25-200	1-1/2x1x8	-	-	-	-	-	-	-	-	-	-	-	-	-	-	-	-	-	-	-	-
40-200	3x1-1/2x8	-	-	-	-	-	-	-	-	-	-	-	-	-	-	-	-	-	-	-	-
50-200	3x2x8	-	-	-	-	-	-	-	-	-	-	-	-	-	-	-	-	-	-	-	-
65-200	3x2-1/2x8	-	-	-	-	-	-	-	-	-	-	-	-	-	-	-	-	-	-	-	-
80-200	4x3x8 +	-	-	-	-	-	-	-	-	-	-	-	-	-	-	-	-	-	-	-	-
100s-200	5x4x8W	-	-	-	-	-	-	-	-	-	-	-	-	-	-	-	-	-	-	-	-
100-200	6x4x8W	-	-	-	-	-	-	-	-	-	-	-	-	-	-	-	-	-	-	-	-
125-200	6x5x8	-	-	-	-	-	-	-	-	-	-	-	-	-	-	-	-	-	-	-	-
200-200	8x8x8	-	-	-	-	-	-	-	-	-	-	-	-	-	-	-	-	-	-	-	-
25-250	2x1x10	-	-	-	-	-	-	-	-	-	-	-	-	-	-	-	-	-	-	-	-
40-250	3x1-1/2x10	-	-	-	-	-	-	-	-	-	-	-	-	-	-	-	-	-	-	-	-
50-250	3x2x10	-	-	-	-	-	-	-	-	-	-	-	-	-	-	-	-	-	-	-	-
65-250	3x2-1/2x10	-	-	-	-	-	-	-	-	-	-	-	-	-	-	-	-	-	-	-	-
80-250	4x3x10	-	-	-	-	-	-	-	-	-	-	-	-	-	-	-	-	-	-	-	-
100s-250	5x4x10	-	-	-	-	-	-	-	-	-	-	-	-	-	-	-	-	-	-	-	-
100-250	6x4x10	-	-	-	-	-	-	-	-	-	-	-	-	-	-	-	-	-	-	-	-
125-250	6x5x10	-	-	-	-	-	-	-	-	-	-	-	-	-	-	-	-	-	-	-	-
150-250	8x6x10W	-	-	-	-	-	-	-	-	-	-	-	-	-	-	-	-	-	-	-	-
80-290	4x3x11-1/2	-	-	-	-	-	-	-	-	-	-	-	-	-	-	-	-	-	-	-	-
100-290	5x4x11-1/2	-	-	-	-	-	-	-	-	-	-	-	-	-	-	-	-	-	-	-	-
125-290	6x5x11-1/2	-	-	-	-	-	-	-	-	-	-	-	-	-	-	-	-	-	-	-	-
150-290	8x6x11-1/2	-	-	-	-	-	-	-	-	-	-	-	-	-	-	-	-	-	-	-	-
40-330	3x1-1/2x13	-	-	-	-	-	-	-	-	-	-	-	-	-	-	-	-	-	-	-	-
50-330	3x2x13	-	-	-	-	-	-	-	-	-	-	-	-	-	-	-	-	-	-	-	-
80-330	4x3x13+	-	-	-	-	-	-	-	-	-	-	-	-	-	-	-	-	-	-	-	-
80-330L	4x3x13L	-	-	-	-	-	-	-	-	-	-	-	-	-	-	-	-	-	-	-	-
100-330	6x4x13	-	-	-	-	-	-	-	-	-	-	-	-	-	-	-	-	-	-	-	-
150-330	8x6x13	-	-	-	-	-	-	-	-	-	-	-	-	-	-	-	-	-	-	-	-
200-330	10x8x13	-	-	-	-	-	-	-	-	-	-	-	-	-	-	-	-	-	-	-	-
150-375	8x6x15	-	-	-	-	-	-	-	-	-	-	-	-	-	-	-	-	-	-	-	-
200-375	10x8x15	-	-	-	-	-	-	-	-	-	-	-	-	-	-	-	-	-	-	-	-
LEGEND	DESCRIPTION	IMPELLER BORE					MECHANICAL SEAL SIZE					LUBRICATION			LUBE OPTIONS						
S	Small Bearing frame	7/8" (0.875")					1-1/4" (1.25")					Permanently Greased			Regrease, Oil						
M	Medium Bearing frame	1-1/8" (1.125")					1-5/8" (1.625")					Regrease			Oil						
MHD*	Medium Heavy-Duty Bearing frame	1-1/8" (1.125")					1-5/8" (1.625")					Oil									
L	Large Bearing frame	2-1/8" (2.125")					2-1/8" (2.125")					Oil									
MHD	Large Heavy-duty Bearing frame	2-1/8" (2.125")					2-1/8" (2.125")					Oil									

**SERIES 4030 CENTERLINE DISCHARGE, BASE MOUNTED PUMP
 "L" SIZE 1 5/8" IMPELLER BORE -- 2 1/8" MECHANICAL SEAL
 EXPLODED VIEW -- OIL LUBRICATION**



INDEX

ITEM	DESCRIPTION	PAGE	ITEM	DESCRIPTION	PAGE	ITEM	DESCRIPTION	PAGE
**	BEARING FRAME ASSY. STD.	8	32	BEARING COVER CAPSCREW	8 & 10	83	IMPELLER WASHER	9 & 11
**	BEARING FRAME ASSY. S/S	10	33	OIL VIEW GAUGE	8 & 10	86	IMPELLER CAPSCREW	9 & 11
21	SHAFT ASSEMBLY	8 & 10	34	VENT FITTING	8 & 10	100	CASING	4
22	BALL BEARING (INBOARD)	8 & 10	35	PIPE PLUG	8 & 10	101	CASING GASKET	7
23	BALL BEARING (OUTBOARD)	8 & 10	36	IMPELLER COUPLER KEY	8 & 10	104	CASING CAPSCREW	6
24	LOCKWASHER	8 & 10	39	WATER SLINGER	8 & 10	110	BEARING FRAME SUPPORT FOOT	9 & 11
25	LOCKNUT	8 & 10	40	ADAPTER	6	112	BRG. FRM. SUPPORT FOOT CAPSCREW (UPR)	9 & 11
26	BEARING FRAME	8 & 10	42	OUTBOARD BEARING COVER	8 & 10	114	BRG. FRM. SUPPORT FOOT ADJUSTING SCREW	9 & 11
28	OIL SEAL (OUTBOARD)	8 & 10	43	OUTBRD BRG COVER SCREWS & WASHERS	8 & 10	114	JAM NUT	9 & 11
29	BEARING COVER	8 & 10	44	BRG. HOUSING CAPSCREW	7	124	BRG. FRM. SUPPORT FOOT CAPSCREWS (LWR)	9 & 11
30	OIL SEAL (INBOARD)	8 & 10	62	MECHANICAL SEAL ASSEMBLY	9 & 11	140	COUPLER	12 & 13
31	"O" RING	8 & 10	80	IMPELLER	5			

4030 PUMP PARTS

CENTERLINE DISCHARGE

"L" SIZE 1 5/8" IMPELLER BORE ----- 1 5/8" SHAFT DIAMETER AT COUPLER

2 1/8" MECHANICAL SEAL

ITEM 101 CASING GASKET

PUMP SIZE	DIMENSIONS O.D X I.D. X THICKNESS	PART NUMBER	BAR CODE
10 X 8 X 13	14"X13 3/4"X1/16"	426401-005	
8 X 6 X 15 10 X 8 X 15	16 3/8"X15 5/8"X1/16"	426401-008	

ITEM 44 BRG. HSG., CAPS. AND WASHER

PUMP SIZE	NO. REQ'D	SIZE	PART NUMBER	BAR CODE
10 X 8 X 13	4	CAPSCREW 1/2-13NC X 1 1/4" LG	911125-110	
8 X 6 X 15				
10 X 8 X 15	4	WASHER 1/2 - 13NC STL - FLAT	927117-100	

4030 PUMP PARTS

CENTERLINE DISCHARGE

"L" SIZE 1 5/8" IMPELLER BORE ----- 1 5/8" SHAFT DIAMETER AT COUPLER

2 1/8" MECHANICAL SEAL

BEARING FRAME ASSEMBLY

STEEL SHAFT, OIL LUBRICATED

ITEM NUMBER	DESCRIPTION	PART NUMBER	BAR CODE
	BEARING FRAME ASSEMBLY(1)	426775-000	
26	BEARING HOUSING	426492-016	
21	SHAFT & SLEEVE ASSEMBLY	427241-001	
22	INBOARD BEARING	971101-922	
23	OUTBOARD BEARING	971101-923	
24	LOCKWASHER	426364-003	
25	LOCKNUT	426364-004	
29	OUTBOARD BEARING COVER	426502-513	
28	OUTBOARD OIL SEAL	965001-190	
31	OUTBD. BRG. COV."O" RING	961131-249	
42	INBOARD BEARING COVER	426507-515	
43	INBOARD BRG. COV. SCREW 3 REQ'D. #10-24 X 7/16"	916364-107	
43	INBD. BRG. COV. SCREW WASH. 3 REQ'D. #10 STEEL	926156-100	
30	INBOARD OIL SEAL	965002-010	
31	INBD. BRG. COV. "O" RING	961131-249	
32	BEARING CAPSCREWS 3/8 - 16NC X 1 1/4" LG (4 REQ'D)	911121-110	
33	OIL VIEW GAUGE	970224-001	
34	AIR VENT	407444-000	
35	PIPE PLUG 1/4" NPT (1 REQ'D)	937105-201	
36	IMPELLER KEY	428163-714	
36	COUPLER KEY	428163-718	
39	WATER SLINGER	419315-001	

NOTE (1) ITEMS 21 TO 39 INCLUSIVE ARE INCLUDED IN THE BEARING FRAME ASSEMBLY

SEE PAGE 9 FOR COMMON PARTS

4030 PUMP PARTS

CENTERLINE DISCHARGE

"L" SIZE 1 5/8" IMPELLER BORE ----- 1 5/8" SHAFT DIAMETER AT COUPLER

2 1/8" MECHANICAL SEAL

COMMON PARTS, STEEL SHAFT, OIL LUBRICATED			
ITEM NUMBER	DESCRIPTION	PART NUMBER BF & AI	BAR CODE
62	MECHANICAL SEAL ASSEMBLY	975000-985**	
83	IMPELLER WASHER	425742-100	
86	S/S IMPELLER CAPSCREW	911900-180	
110	SUPPORT FOOT	426361-001	
112	SUP. FOOT CAPSCREW UPPER 1/2"-13NC X 1" LG. (1 req'd)	911129-108	
112	SUP. FT. CAPS. WASHER UPPER 1/2" SAE (1 req'd)	927117-100	
114	SUPPORT FOOT JACKSCREW 1/2"-13NC X 1 3/4" LG. (1 req'd)	911129-114	
114	JACKSCREW NUT 1/2"-13NC JAM NUT (1req'd)	913125-100	
124	SUP. FOOT CAPSCREW LOWER 1/2"-13NC X 1 1/2" LG.	911125-112	
124	SUP. FT. CAPS WASHER LOWER 1/2"- FLAT	927118-100	

** Suitable for Potable / Drinking water. For non-potable water use 9975000-987

4030 PUMP PARTS

CENTERLINE DISCHARGE

"L" SIZE 1 5/8" IMPELLER BORE ----- 1 5/8" SHAFT DIAMETER AT COUPLER

2 1/8" MECHANICAL SEAL

BEARING FRAME ASSEMBLY

STAINLESS STEEL SHAFT, OIL LUBRICATED

ITEM NUMBER	DESCRIPTION	PART NUMBER	BAR CODE
	BEARING FRAME ASSEMBLY(1)	426775-071	
26	BEARING HOUSING	426492-016	
21	SHAFT & SLEEVE ASSEMBLY	427241-071	
22	INBOARD BEARING	971101-922	
23	OUTBOARD BEARING	971101-923	
24	LOCKWASHER	426364-003	
25	LOCKNUT	426364-004	
29	OUTBOARD BEARING COVER	426502-513	
28	OUTBOARD OIL SEAL	965001-190	
31	OUTBD. BRG. COV."O" RING	961131-249	
42	INBOARD BEARING COVER	426507-515	
43	INBOARD BRG. COV. SCREW 3 REQ'D. #10-24 X 7/16"	916364-107	
43	INBD. BRG. COV. SCREW WASH. 3 REQ'D. #10 STEEL	926156-100	
30	INBOARD OIL SEAL	965002-010	
31	INBD. BRG. COV. "O" RING	961131-249	
32	BEARING CAPSCREWS 3/8 - 16NC X 1 1/4" LG (4 REQ'D)	911121-110	
33	OIL VIEW GAUGE	970224-001	
34	AIR VENT	407444-000	
35	PIPE PLUG 1/4" NPT (1 REQ'D)	937105-201	
36	IMPELLER KEY	428163-714	
36	COUPLER KEY	428163-718	
39	WATER SLINGER	419315-001	

NOTE (1) ITEMS 21 TO 39 INCLUSIVE ARE INCLUDED IN THE BEARING FRAME ASSEMBLY

SEE PAGE 11 FOR COMMON PARTS

4030 PUMP PARTS

CENTERLINE DISCHARGE

"L" SIZE 1 5/8" IMPELLER BORE ----- 1 5/8" SHAFT DIAMETER AT COUPLER

2 1/8" MECHANICAL SEAL

COMMON PARTS, S/S SHAFT, OIL LUBRICATED			
ITEM NUMBER	DESCRIPTION	PART NUMBER BF & AI	BAR CODE
62	MECHANICAL SEAL ASSEMBLY	975000-985**	
83	IMPELLER WASHER	425742-100	
86	S/S IMPELLER CAPSCREW	911900-180	
110	SUPPORT FOOT	426361-001	
112	SUP. FOOT CAPSCREW UPPER 1/2"-13NC X 1" LG. (1 req'd)	911129-108	
112	SUP. FT. CAPS. WASHER UPPER 1/2" SAE (1 req'd)	927117-100	
114	SUPPORT FOOT JACKSCREW 1/2"-13NC X 1 3/4" LG. (1 req'd)	911129-114	
114	JACKSCREW NUT 1/2"-13NC JAM NUT (1req'd)	913125-100	
124	SUP. FOOT CAPSCREW LOWER 1/2"-13NC X 1 1/2" LG.	911125-112	
124	SUP. FT. CAPS WASHER LOWER 1/2"- FLAT	927118-100	

** Suitable for Potable / Drinking water. For non-potable water use 9975000-987

4030 PUMP PARTS

CENTERLINE DISCHARGE

3 PIECE COUPLING

No. Of Poles	Motor (Kw)	Motor Shaft Dia	Motor Frame Size	Flexible Element Part No	Bearing Assembly Ref	Coupling Motor Part No. B Flange	PUMP Bearing Assssembly (S) B Flange	Pump Bearing Assssembly (M/MHD) B Flange	Pump Bearing Assssembly (L) B Flange
2	0.75	19	80	K2090/16	S	K2046/166	K2046/177	N/A	N/A
4	0.55	19	80	K2090/16	S	K2046/166	K2046/177	N/A	N/A
2	1.5		90	K2090/16	S		K2046/177		
4	1.1	24	90	K2090/16	S	K2046/167	K2046/177	N/A	N/A
2	3	28	100	K2090/09	S	K2046/168	K2046/178	N/A	N/A
4	2.2	28	100	K2090/09	S	K2046/168	K2046/178	N/A	N/A
2	4	28	112	K2090/09	S	K2046/168	K2046/178	N/A	N/A
4	4	28	112	K2090/09	M, MHD	K2046/168	N/A	K2046/179	N/A
2	5.5	38	132	K2090/10	S, M &MHD	K2046/169	K2046/180	K2046/181	N/A
4	5.5	38	132	K2090/10	S, M & MHD	K2046/169	K2046/180	K2046/181	N/A
2	11		160	K2090/14	S, M & MHD	K2046/170	K2046/182	K2046/183	N/A
4	11		160	K2090/14	S,M & MHD	K2046/170	K2046/182	K2046/183	N/A
2	22	48	180	K2090/14	S, M &MHD	K2046/171	K2046/182	K2046/183	N/A
4	18.5	48	180	K2090/14	M,MHD &L	K2046/171	N/A	K2046/183	K2046/184
2	30	55	200	K2090/11	M,MHD &L	K2046/172	N/A	K2046/185	K2046/186
4	30		200	K2090/11	M,MHD &L	K2046/172	N/A	K2046/185	K2046/186
2	45	55	225	K2090/11	M,MHD &L	K2046/172	N/A	K2046/185	K2046/186
4	37	60	225	K2090/11	M,MHD &L	K2046/173	N/A	K2046/185	K2046/186
2	55	60	250	K2090/11	M,MHD &L	K2046/173	N/A	K2046/185	K2046/186
4	55	65	250	K2090/11	L	K2046/174	N/A	N/A	K2046/186
2	75		280	K2090/12	M,MHD &L	K2046/175	N/A	K2046/187	K2046/188
4	75		280	K2090/12	L	K2046/176	N/A	N/A	K2046/188

No. Of Poles	Speed (Rpm)
2	2945
4	1445

Size	Inches
S	7/8
M	1 1/8
MHD	1 1/8
L	1 5/8

4030 PUMP PARTS

CENTERLINE DISCHARGE

5 PIECE HRC COUPLING

No. Of Poles	Motor (Kw)	Motor Frame Size	Coupling Size	Taper Lock Bush Ref	Motor Shaft Ø (mm)	Motor T/lock Part No.	Coupling Part No. F Flange	Flexible Element Part No	Coupling Part No. H Flange	Bearing Assembly Ref	T/lock Part No. Bearing Assembly (S)	Bearing Assemlly T/lock Part No. (M/MHD)	Bearing Assemlly T/lock Part No. (L)
2	0.75	80	70	1008	19	K2196/M19	K2046/137	K2090/16	K2046/138	S	UKD05530/009	N/A	N/A
4	0.55	80	70	1008	19	K2196/M19	K2046/137	K2090/16	K2046/138	S	UKD05530/009	N/A	N/A
2	1.5	90	70	1008	24	K2196/M24		K2090/16	K2046/138	S	UKD05530/009		
4	1.1	90	70	1008	24	K2196/M24	K2046/137	K2090/16	K2046/138	S	UKD05530/009	N/A	N/A
2	3	100	90	1108	28	K2196/E28	K2046/117	K2090/09	K2046/133	S	K1196/A9	N/A	N/A
4	2.2	100	90	1108	28	K2196/E28	K2046/117	K2090/09	K2046/133	S	K1196/A9	N/A	N/A
2	4	112	90	1108	28	K2196/E28	K2046/117	K2090/09	K2046/133	S	K1196/A9	N/A	N/A
4	4	112	90	1108	28	K2196/E28	K2046/117	K2090/09	K2046/133	M, MHD	N/A	K1196/A10	N/A
2	5.5	132	110	1610	38	K2196/B38	K2046/118	K2090/10	K2046/136	S, M &MHD	K1196/J7	K1196/J10	N/A
4	5.5	132	110	1610	38	K2196/B38	K2046/118	K2090/10	K2046/136	S, M & MHD	K1196/J7	K1196/J10	N/A
2	11	160	150	2012	42	K2196/C42	K2046/126	K2090/14	K2046/127	S, M & MHD	UKD05530-409	UKD05530-415	N/A
4	11	160	150	2012	42	K2196/C42	K2046/126	K2090/14	K2046/127	S,M & MHD	UKD05530-409	UKD05530-415	N/A
2	22	180	150	2012	48	K2196/C48	K2046/126	K2090/14	K2046/127	S, M &MHD	UKD05530-409	UKD05530-415	N/A
4	18.5	180	150	2012	48	K2196/C48	K2046/126	K2090/14	K2046/127	M,MHD &L	N/A	UKD05530-415	K1196/K14
2	30	200	180	2517	55	K2196/F55	K2046/120	K2090/11	K2046/119	M,MHD &L	N/A	K1196/E10	K1196/E14
4	30	200	180	2517	55	K2196/F55	K2046/120	K2090/11	K2046/119	M,MHD &L	N/A	K1196/E10	K1196/E14
2	45	225	180	2517	55	K2196/F55	K2046/120	K2090/11	K2046/119	M,MHD &L	N/A	K1196/E10	K1196/E14
4	37	225	180	2517	60	K2196/F60	K2046/120	K2090/11	K2046/119	M,MHD &L	N/A	K1196/E10	K1196/E14
2	55	250	180	3020	60	K2196/H60	K2046/121	K2090/11	K2046/122	M,MHD &L	N/A	UKD05530-615	K1196/L14
4	55	250	180	3020	65	K2196/H65	K2046/121	K2090/11	K2046/122	L	N/A	N/A	K1196/L14
2	75	280	230	3020	65	K2196/H65	K2046/121	K2090/12	K2046/122	M,MHD &L	N/A	UKD05530-615	K1196/L14
4	75	280	230	3020	75	K2196/H75	K2046/121	K2090/12	K2046/122	L	N/A	N/A	K1196/L14

No. Of Poles	Speed (Rpm)
2	2945
4	1445

Size	Inches
S	7/8
M	1 1/8
MHD	1 1/8
L	1 5/8