



FILE NO.:	6043.129
DATE:	December 21, 2011
SUPERSEDES:	6043.129
DATE:	May 11, 2010

PARTS LIST

SERIES 4380

VERTICAL IN-LINE

EQUAL SUCTION & DISCHARGE
"S" DESIGNATION

7/8" IMPELLER BORE -- 1-1/4" MECHANICAL SEAL

NEW DESIGN

4380 POWER FRAMES: ALL SPEEDS

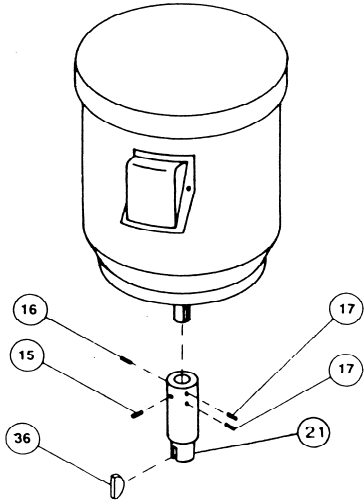
SPEED	MOTOR HORSEPOWER																		
	1/2	3/4	1	1 1/2	2	3	5	3	5	7 1/2	10			15	20			25	30
1150 RPM	3/4	1	1 1/2 & 2	3	5	7 1/2	10	7 1/2	10	15	20			25	30			40	50
1750 RPM	1	1 1/2	2 & 3	5	7 1/2	10	15	10	15	20	25	30	40			50	60		
3500 RPM																			
FRAME	56C	143JM	145JM	182JM	184JM	213JM	215JM	213JP	215JP	254JM	256JM	284JM	286JM	284JP	286JP	324JM	326JM	324JP	326JP
PUMP SIZE																			
1 1/2 X 1 1/2 X 6	S	S	S	S	S	S													
2 X 2 X 6	S	S	S	S	S	S	S												
3 X 3 X 6	S	S	S	S	S	S	S												
4 X 4 X 6W		S	S	S	S	S	S			M	M								
1 1/2 X 1 1/2 X 8	S	S	S	S	S			M	M										
2 X 2 X 8	S	S	S	S	S			M	M	M	M	M	M						
3 X 3 X 8	S	S	S	S	S			M	M	M	M	M	M			M	M		
4 X 4 X 8		S	S	S	S			M	M	M	M	M	M			M	M		
5 X 5 X 8		S	S	S	S			M	M	M	M	M	M			M	M		
6 X 6 X 8		S	S	S	S			M	M	M	M								
8 X 8 X 8				S	S			M	M	M	M								
1.5 X 1.5 X 10		S	S	S	S			M	M	M	M			M	M			M	M
2 X 2 X 10		S	S	S	S			M	M	M	M			M	M			M	M
3 X 3 X 10		S	S	S	S			M	M	M	M			M	M			M	M
4 X 4 X 10		S	S	S	S			M	M	M	M			M	M			M	M
6 X 6 X 10		S	S	S	S			M	M	M	M			M	M				
8 X 8 X 10								M	M	M	M			M	M			M	M
4 X 4 X 11 1/2		S	S	S	S			M	M	M	M			M	M				
5 X 5 X 11 1/2								M	M	M	M			M	M				
6 X 6 X 11 1/2								M	M	M	M			M	M			M	M
8 X 8 X 11 1/2										M	M			M	M			M	M
3 X 3 X 13								M	M	M	M			M	M				
4 X 4 X 13								M	M	M	M			M	M			M	M
6 X 6 X 13								M	M	M	M			M	M			M	M
8 X 8 X 13										M	M			M	M			M	M

"S" DESIGNATION - 7/8" IMPELLER BORE, 1 1/4" MECHANICAL SEAL

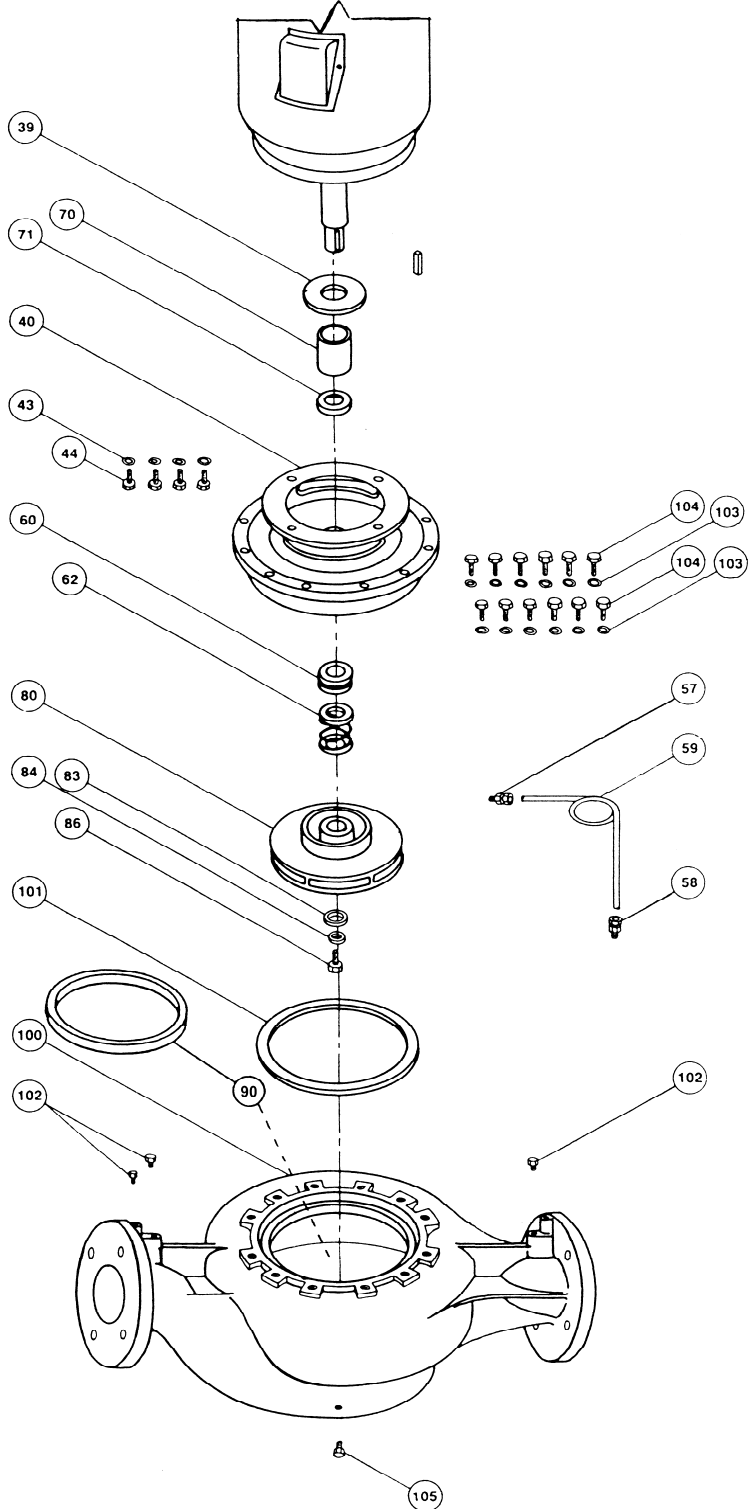
"M" DESIGNATION - 1 1/4" IMPELLER BORE, 1 5/8" MECHANICAL SEAL

4380 NEW STYLE VERTICAL PUMP
EQUAL SUCTION AND DISCHARGE
"S" DESIGNATION
7/8" IMPELLER BORE -- 1 1/4" MECHANICAL SEAL

EXPLODED VIEW



Frame 56 C Shaft Arrangement



SEE PAGE 3 FOR PARTS INDEX

MODEL 4380 VERTICAL IN-LINE

EQUAL SUCTION AND DISCHARGE

PUMP PARTS

INDEX					
ITEM	DESCRIPTION	PAGE	ITEM	DESCRIPTION	PAGE
15	SET SCREW	15	70	SHAFT SLEEVE	16
16	SET SCREW	15	71	SHAFT SLEEVE SPACER	14
17	SET SCREW	15	80	IMPELLER	11 & 12
21	SHAFT EXTENSION	15	83	WASHER (IMPELLER)	16
36	SHAFT KEY	15	86	CAPSCREW (IMPELLER)	16
39	WATER SLINGER	16	90	CASE WEAR RING	4 & 5
40	STUFF. BOX/ADAPTER	13	100	CASING	9 & 10
43	WASHER (MOTOR)	14	101	CASING GASKET	6
44	CAPSCREW (MOTOR)	14	102	CASING GAUGE PLUG	17
57	MALE CONNECTOR	17	103	CASING CAPSCREW WASHER	7
58	MALE CONNECTOR	15	104	CASING CAPSCREW	7
59	TUBING	17	105	CASING DRAIN PLUG	8
62	MECHANICAL SEAL KIT	16	90	CASE WEAR RING	9 & 10

VERTICAL IN-LINE MODEL 4380 PUMP PARTS

EQUAL SUCTION AND DISCHARGE

"S" SIZE - 7/8" IMPELLER BORE - 1 1/4" MECHANICAL SEAL

ITEM 101 CASING**			
PUMP SIZE	MATERIAL	PART NUMBER	BAR CODE
1 1/2X1 1/2X6	125# C.I.*	427135-011	
1 1/2X1 1/2X6	250# D.I.*	427036-031	
2X2X6	125# C.I.	427037-011	
2X2X6	250# D.I.	427038-031	
3X3X6	125# C.I.	427041-011	
3X3X6	250# D.I.	427042-031	
4X4X6	125# C.I.	427043-011	
4X4X6	250# D.I.	427044-031	
1 1/2X1 1/2X8	125# C.I.	427045-011	
1 1/2X1 1/2X8	250# D.I.	427046-031	
2X2X8	125# C.I.	427047-011	
2X2X8	250# D.I.	427048-031	
3X3X8	125# C.I.	427051-011	
3X3X8	250# D.I.	427052-031	
4X4X8	125# C.I.	427053-011	
4X4X8	250# D.I.	427054-031	

NOTES: C.I.* DENOTES CAST IRON and D.I.* DENOTES DUCTILE IRON

For other constructions change the suffix to the following:

ALL BRONZE CONSTRUCTION - 041

STAINLESS STEEL CONSTRUCTION - 071

** CASING PART NUMBERS ARE FOR CASING ONLY, CASING WEAR RING IS SOLD SEPARATELY.

CASINGS CONTINUED ON PAGE 5

VERTICAL IN-LINE MODEL 4380 PUMP PARTS

EQUAL SUCTION AND DISCHARGE

"S" SIZE - 7/8" IMPELLER BORE - 1 1/4" MECHANICAL SEAL

ITEM 101 CASING** (cont'd)			
PUMP SIZE	MATERIAL	PART NUMBER	BAR CODE
5X5X8	125# C.I.	427024-011	
5X5X8	250# D.I.	427025-031	
6X6X8	125# C.I.	427055-011	
6X6X8	250# D.I.	427056-031	
8X8X8	125# C.I.	427915-011	
8X8X8	250# D.I.	427916-031	
1.5X1.5X10	125# C.I.*	426257-011	
1.5X1.5X10	250# D.I.*	426258-031	
2X2X10	125# C.I.*	427059-011	
2X2X10	250# D.I.*	427060-031	
3X3X10	125# C.I.	427061-011	
3X3X10	250# D.I.	427062-031	
4X4X10	125# C.I.	427063-011	
4X4X10	250# D.I.	427064-031	
6X6X10	125# C.I.	427065-011	
6X6X10	250# D.I.	427066-031	
4X4X11 1/2	125# C.I.	426119-011	
4X4X11 1/2	250# D.I.	426120-031	

NOTES: C.I.* DENOTES CAST IRON and D.I.* DENOTES DUCTILE IRON

For other constructions change the suffix to the following:

ALL BRONZE CONSTRUCTION -041

STAINLESS STEEL CONSTRUCTION -071

**** CASING PART NUMBERS ARE FOR CASING ONLY, CASING WEAR RING IS SOLD SEPARATELY.**

**VERTICAL IN-LINE
MODEL 4380
PUMP PARTS**

EQUAL SUCTION AND DISCHARGE

"S" SIZE - 7/8" IMPELLER BORE - 1 1/4" MECHANICAL SEAL

ITEM 101 CASING GASKET		
PUMP SIZE	PART NUMBER	BAR CODE
1 1/2 X 1 1/2 X 6	426401-002	
2 X 2 X 6		
3 X 3 X 6		
4 X 4 X 6W		
1 1/2 X 1 1/2 X 8	426401-003	
2 X 2 X 8		
4 X 4 X 8		
5 X 5 X 8		
6 X 6 X 8W		
8 X 8 X 8		
1.5x1.5x10	426401-004	
2 X 2 X 10		
3 X 3 X 10		
4 X 4 X 10		
4 X 4 X 11 1/2	426401-006	

**VERTICAL IN-LINE
MODEL 4380
PUMP PARTS**

EQUAL SUCTION AND DISCHARGE

"S" SIZE - 7/8" IMPELLER BORE - 1 1/4" MECHANICAL SEAL

ITEM 104 CASING CAPSCREW & WASHER

PUMP SIZE	NO. REQ'D	SIZE	PART NUMBER	BAR CODE
1 1/2 X 1 1/2 X 6		CAPSCREW		
2 X 2 X 6	12	1/2" - 13NC X 1 1/4"LG.	911125-110	
3 X 3 X 6		WASHER		
4 X 4 X 6W	12	1/2" - SAE FLAT	927117-100	
1 1/2 X 1 1/2 X 8		HX. HD. CAPSCREW		
2 X 2 X 8	8	5/8" - 11NC X 1 1/2"LG.	911129-112	
4 X 4 X 8				
5 X 5 X 8		WASHER		
6 X 6 X 8W	8	5/8" - SAE FLAT	927121-100	
8 X 8 X 8				
1.5x1.5x10		CAPSCREW		
2 X 2 X 10	12	5/8" - 11NC X 1 1/2"LG.	911129-112	
3 X 3 X 10				
		WASHER		
4 X 4 X 10	12	5/8 - SAE FLAT	927121-100	
		CAPSCREW		
	16	1/2" - 13NC X 1 1/2"LG.	911125-112	
4 X 3 X 11 1/2				
		WASHER		
	16	1/2" - SAE FLAT	927117-100	

**VERTICAL IN-LINE
MODEL 4380
PUMP PARTS**

EQUAL SUCTION AND DISCHARGE

"S" SIZE - 7/8" IMPELLER BORE - 1 1/4" MECHANICAL SEAL

ITEM 105 CASING DRAIN PLUG					
PUMP SIZE	MATERIAL	NO. REQ'D	SIZE	PART NUMBER	BAR CODE
1 1/2X1 1/2X6					
2X2X6					
3X3X6					
4X4X6					
1 1/2X1 1/2X8					
2X2X8	CAD PLATED	1	1/4" NPT	937105-201	
3X3X8					
4X4X8					
6X6X8					
8X8X8					
1.5x1.5x10					
2X2X10					
3X3X10					
4X4X10					
4X4X11 1/2					
5X5X8	CAD PLATED	1	1/2" NPT	937105-203	

ITEM 102 CASING GAUGE PLUG					
ALL	CAD PLATED	4	1/4" NPT	937105-201	

**VERTICAL IN-LINE
MODEL 4380
PUMP PARTS
EQUAL SUCTION AND DISCHARGE**

"S" SIZE - 7/8" IMPELLER BORE - 1 1/4" MECHANICAL SEAL

ITEM 90 CASE WEAR RING				
PUMP SIZE	CONST.	MATERIAL	PART NUMBER	BAR CODE
1 1/2X1 1/2X6	AB-BF	SAE 660 BRONZE	426413-401	
1 1/2X1 1/2X6	AI-DI	CLASS 30 C.I.	426413-101	
2X2X6	AB-BF	SAE 660 BRONZE	426413-403	
2X2X6	AI-DI	CLASS 30 C.I.	426413-103	
3X3X6	AB-BF	SAE 660 BRONZE	426413-406	
3X3X6	AI-DI	CLASS 30 C.I.	426413-106	
4X4X6	AB-BF	SAE 660 BRONZE	426413-404	
4X4X6	AI-DI	CLASS 30 C.I.	426413-104	
1 1/2X1 1/2X8	AB-BF	SAE 660 BRONZE	426413-402	
1 1/2X1 1/2X8	AI-DI	CLASS 30 C.I.	426413-102	
2X2X8	AB-BF	SAE 660 BRONZE	426413-404	
2X2X8	AI-DI	CLASS 30 C.I.	426413-104	
3X3X8	AB-BF	SAE 660 BRONZE	426413-407	
3X3X8	AI-DI	CLASS 30 C.I.	426413-107	

WEAR RINGS CONTINUED ON PAGE 10

VERTICAL IN-LINE MODEL 4380 PUMP PARTS

EQUAL SUCTION AND DISCHARGE

"S" SIZE - 7/8" IMPELLER BORE - 1 1/4" MECHANICAL SEAL

ITEM 90 CASE WEAR RING (cont'd)

PUMP SIZE	CONST.	MATERIAL	PART NUMBER	BAR CODE
4X4X8	AB-BF	SAE 660 BRONZE	426413-410	
4X4X8	AI-DI	CLASS 30 C.I.	426413-110	
5X5X8	AB-BF	SAE 660 BRONZE	426413-413	
5X5X8	AI-DI	CLASS 30 C.I.	426413-113	
8X8X8	AI-DI	CLASS 30 C.I.		
8X8X8	AI-DI	CLASS 30 C.I.		
1.5x1.5x10	AB-BF	SAE 660 BRONZE	426416-402	
1.5x1.5x10	AI-DI	CLASS 30 C.I.	426416-102	
2x2x10	AB-BF	SAE 660 BRONZE	426413-404	
2x2x10	AI-DI	CLASS 30 C.I.	426413-104	
3x3x10	AB-BF	SAE 660 BRONZE	426413-404	
3x3x10	AI-DI	CLASS 30 C.I.	426413-104	
4x4x10	AB-BF	SAE 660 BRONZE	426413-408	
4x4x10	AI-DI	CLASS 30 C.I.	426413-108	
4x4x11 1/2	AB-BF	SAE 660 BRONZE	426412-405	
4x4x11 1/2	AI-DI	CLASS 30 C.I.	426412-105	

VERTICAL IN-LINE MODEL 4380 PUMP PARTS

EQUAL SUCTION AND DISCHARGE

"S" SIZE - 7/8" IMPELLER BORE - 1 1/4" MECHANICAL SEAL

ITEM 102 IMPELLER** 7/8" BORE

PUMP SIZE	MATERIAL	IMP. BORE	MAX. DIA.	PART NUMBER	BAR CODE
1 1/2X1 1/2X6	BRONZE	7/8"	6"	427099-011	
1 1/2X1 1/2X6	CAST IRON	7/8"	6"	427099-011	
2X2X6	BRONZE	7/8"	6"	427109-041	
2X2X6	CAST IRON	7/8"	6"	427109-011	
3X3X6	BRONZE	7/8"	6"	427103-041	
3X3X6	CAST IRON	7/8"	6"	427103-011	
4X4X6	BRONZE	7/8"	6"	427115-041	
4X4X6	CAST IRON	7/8"	6"	427115-011	
1 1/2X1 1/2X8	BRONZE	7/8"	8"	427119-041	
1 1/2X1 1/2X8	CAST IRON	7/8"	8"	427119-011	
2X2X8	BRONZE	7/8"	8"	427121-041	
2X2X8	CAST IRON	7/8"	8"	427121-011	
3X3X8	BRONZE	7/8"	8"	427129-041	
3X3X8	CAST IRON	7/8"	8"	427129-011	
4X4X8	BRONZE	7/8"	8"	427137-041	
4X4X8	CAST IRON	7/8"	8"	427137-011	

NOTES:

** Impeller Part Numbers are for full or maximum diameter Impellers. Always specify Pump Serial Number and where possible, measure and advise the diameter of the Impeller being replaced on these Pumps.

IMPELLERS CONTINUED ON PAGE 12

VERTICAL IN-LINE MODEL 4380 PUMP PARTS

EQUAL SUCTION AND DISCHARGE

"S" SIZE - 7/8" IMPELLER BORE - 1 1/4" MECHANICAL SEAL

ITEM 102 IMPELLER** 7/8" BORE (cont'd)

PUMP SIZE	MATERIAL	IMP. BORE	MAX. DIA.	PART NUMBER	BAR CODE
5X5X8	BRONZE	7/8"	8"	427131-041	
5X5X8	CAST IRON	7/8"	8"	427131-011	
6X6X8	BRONZE	7/8"	8"	427139-041	
6X6X8	CAST IRON	7/8"	8"	427139-011	
8X8X8	BRONZE	7/8"	8"	427917-041	
8X8X8	CAST IRON	7/8"	8"	427917-011	
1.5x1.5x10	BRONZE	7/8"	10"	426255-041	
1.5x1.5x10	CAST IRON	7/8"	10"	426255-011	
2x2x10	BRONZE	7/8"	10"	427151-041	
2x2x10	CAST IRON	7/8"	10"	427151-011	
3x3x10	BRONZE	7/8"	10"	427163-041	
3x3x10	CAST IRON	7/8"	10"	427163-011	
4x4x10	BRONZE	7/8"	10"	427149-041	
4x4x10	CAST IRON	7/8"	10"	427149-011	
6x6x10	BRONZE	7/8"	10"	427153-041	
6x6x10	CAST IRON	7/8"	10"	427153-011	
4x4x11 1/2	BRONZE	7/8"	11 1/2"	426281-041	
4x4x11 1/2	CAST IRON	7/8"	11 1/2"	426281-011	

NOTES:

** Impeller Part Numbers are for full or maximum diameter Impellers. Always specify Pump Serial Number and where possible, measure and advise the diameter of the Impeller being replaced on these Pumps.

VERTICAL IN-LINE MODEL 4380 PUMP PARTS

EQUAL SUCTION AND DISCHARGE

"S" SIZE - 7/8" IMPELLER BORE - 1 1/4" MECHANICAL SEAL

ITEM 40 & 50 CAST IRON COMB. STUFFING BOX & ADAPTER			
PUMP SIZE	MOTOR FRAME		BAR CODE
	56TC & 143 TO 184JM	213 TO 215JM	
1 1/2 X 1 1/2 X 6	426746-011		
1 1/2 X 1 1/2 X 6		426747-011	
2 X 2 X 6	426746-011		
2 X 2 X 6		426747-011	
3 X 3 X 6	426746-011		
3 X 3 X 6		426747-011	
4 X 4 X 6W	426746-011		
4 X 4 X 6W		426747-011	
1 1/2 X 1 1/2 X 8	426749-011		
2 X 2 X 8	426749-011		
4 X 4 X 8	426749-011		
5 X 5 X 8	426749-011		
6 X 6 X 8W	426749-011		
8 X 8 X 8	426749-011		
1.5 x 1.5 x 10	426753-011		
2 X 2 X 10	426753-011		
3 X 3 X 10	426753-011		
4 X 4 X 10	426753-011		
4 X 4 X 11 1/2	426741-011		

The above Part Numbers are for B.F. and A.I. Construction, the suffix will change for other Constructions as follows:

Ductile Iron Construction - 031

All Bronze Construction - 041

Stainless Steel Construction - 071

VERTICAL IN-LINE MODEL 4380 PUMP PARTS

EQUAL SUCTION AND DISCHARGE

"S" SIZE - 7/8" IMPELLER BORE - 1 1/4" MECHANICAL SEAL

ITEM 44 MOTOR CAPSCREW & WASHER

PUMP SIZE	MOTOR FRAME	
	56TC & 143 TO 184JM	213 TO 215JM
	4 REQUIRED	4 REQUIRED
<p>1 1/2 X 1 1/2 X 6</p> <p style="text-align: center;">2 X 2 X 6</p> <p style="text-align: center;">3 X 3 X 6</p> <p style="text-align: center;">4 X 4 X 6W</p>	<p>CAPSCREW</p> <p>3/8"NCX1"</p> <p>PART NUMBER 911121-108</p>	<p>CAPSCREW</p> <p>1/2"-13NCX1"</p> <p>PART NUMBER 911125-108</p> <p>WASHER</p> <p>1/2" FLAT</p> <p>PART NUMBER 927117-100</p>
<p>1 1/2 X 1 1/2 X 8</p> <p style="text-align: center;">2 X 2 X 8</p> <p style="text-align: center;">4 X 4 X 8</p> <p style="text-align: center;">5 X 5 X 8</p> <p style="text-align: center;">6 X 6 X 8W</p> <p style="text-align: center;">8 x 8 x 8</p> <p style="text-align: center;">1.5 x 1.5 x 10</p> <p style="text-align: center;">2 X 2 X 10</p> <p style="text-align: center;">3 X 3 X 10</p> <p style="text-align: center;">4 X 4 X 10</p> <p style="text-align: center;">4 X 4 X 11 1/2</p>	<p>WASHER</p> <p>3/8" FLAT</p> <p>PART NUMBER 927113-100</p>	

BAR CODES

927113-100		911121-108	
927117-100		911125-108	

**VERTICAL IN-LINE
MODEL 4380
PUMP PARTS**

EQUAL SUCTION AND DISCHARGE

"S" SIZE - 7/8" IMPELLER BORE - 1 1/4" MECHANICAL SEAL

PARTS FOR FRAME 56TC ONLY

ITEM NO.	DESCRIPTION	CONST.	PART NUMBER	BAR CODE
15	ALLEN SET SCREW (1 REQ'D) CONE POINT 1/4-20 X 5/16" LONG		916517-005	
16	ALLEN SET SCREW (1 REQ'D) CUP POINT 5/16-18 X 1/4" LONG		916519-104	
17	ALLEN SET SCREW (2 REQ'D) DOG POINT 1/4-20X5/16" LONG		916517-205	
21	SHAFT EXTENSION		426992-071	
36	SHAFT KEY		974515-400	

PARTS FOR FRAMES 143 TO 215JM

ITEM NO.	DESCRIPTION	CONST.	PART NUMBER	BAR CODE
70	SHAFT SLEEVE	B.F.	425869-001	
70	SHAFT SLEEVE	A.I.	425869-002	
71	SLEEVE SPACER	ALL	425868-005	

**VERTICAL IN-LINE
MODEL 4380
PUMP PARTS**

EQUAL SUCTION AND DISCHARGE

"S" SIZE - 7/8" IMPELLER BORE - 1 1/4" MECHANICAL SEAL

ITEMS 70 & 71 SHAFT SLEEVE & SPACER KITS				
ITEM	DESCRIPTION	CONST.	PART	BAR CODE
70 & 71	SH. SLV. & SPACER KIT	B.F.	810150-150	
70 & 71	SH. SLV. & SPACER KIT	A.I.	810150-151	

COMMON PARTS				
ITEM NO.	DESCRIPTION	CONST.	PART NUMBER	BAR CODE
62K	MECHANICAL SEAL KIT	ALL	975000-982**	
39	WATER SLINGER	ALL	406622-000	
83	IMPELLER WASHER	ALL	425742-001	
86	IMPELLER CAPSCREW	ALL	911900-114	

** For liquids above 200°F/93°C use 9975001-813 (-613 if potable drinking water above 200°F/93°C) For glycols above 30% by weight use 9975001-817 (-818 if above 200°F/93°C)

**VERTICAL IN-LINE
MODEL 4380
PUMP PARTS**

EQUAL SUCTION AND DISCHARGE

"S" SIZE - 7/8" IMPELLER BORE - 1 1/4" MECHANICAL SEAL

ITEM 57& 58 MALE CONNECTOR**

PUMP SIZE	NO. REQ'D.	MAT.	SIZE	CONST.	PART NUMBER	BAR CODE
ALL	1	BRASS	3/8" TUBE X 1/4"NPT	B.F./A.B.	939001-114	
ALL	1	STEEL	3/8" TUBE X 1/4"NPT	A.I.	939001-214	

ITEM 59 FLUSH LINE TUBING**

PUMP SIZE	NO. REQ'D.	MAT.	SIZE	CONST.	PART NUMBER	BAR CODE
1 1/2X1 1/2X6 TO 8X8X11 1/2	1	COPPER	3/8" OD X 12"LG.	B.F./A.B.	997531-004	
		STEEL		A.I.	997153-004	

ITEM 102 GAUGE PLUG

PUMP SIZE	NO. REQ'D	MAT.	SIZE	CONST.	PART NUMBER	BAR CODE
ALL	4	CAD. PLTD. STEEL	1/4" NPT	ALL	937105-201	