



FILE NO.:	6043.120
DATE:	January 5, 2012
SUPERSEDES:	6043.120
DATE:	Feb. 27, 2004

**VERTICAL IN-LINE SPLIT COUPLER**

**PARTS LIST**

---

# **SERIES 4300**

**EQUAL SUCTION & DISCHARGE**

**GROUPS 1 & 2**

**7/8" IMPELLER BORE -- 1 1/4" MECHANICAL SEAL OR PACKING GLAND**

**NEW DESIGN**



# MODEL 4300 - VERTICAL PUMP - SPLIT COUPLING

## GROUPS 1 & 2 SELECTION CHART

PUMP SIZE	MOTOR FRAME GROUP NO.	SERIES 4300 MOTOR FRAME/P-BASE DESIGNATION*											
		143-145	182-184	213-215	254-256	284-286	284-286	324-326	364-365	404-405	444-445	448-449	499-500
1-1/2X1X6	1	10											
	2	10											
2X2X6	1	10											
	2	10	10										
3X3X6	1	10											
	2	10	10	10									
4X4X6	1	10											
	2	10	10	10	10								
1-1/2X1-1/2X 8	1	10											
	2	10	10	10									
2X2X8	1	10											
	2		10	10	10								
	4					16							
3X3X8	1	10											
	2		10	10	10								
	4					16	16						
4X4X8	1	10											
	2		10	10	10								
	4					16	16						
	5							16					
5X5X8	1	10											
	2		10	10	10								
	4					16	16						
								16					
6X6X8	2		10	10	10								
1.5X1.5X10	1	10											
	2		10	10	10								
	4					16	16						
2X2X10	1	10											
	2		10	10	10								
	4					16	16						
3X3X10	2		10	10	10								
	4					16	16						
	5							16					
4X4X10	2		10	10	10								
	4					16	16						
	5							16					
6X6X10	2			10	10								
	4					16	16						
	5							16	16				
8X8X10	2			10	10								
	4					16	16						
4X4X11-1/2	2		10	10	10								
	4					16	16						
5X5X11-1/2	2		10	10	10								
	4					16	16						
6X6X11-1/2	2		10	10	10								
	4					16	16						
8X8X11-1/2	2				10								
	4					16	16						
	5							16					

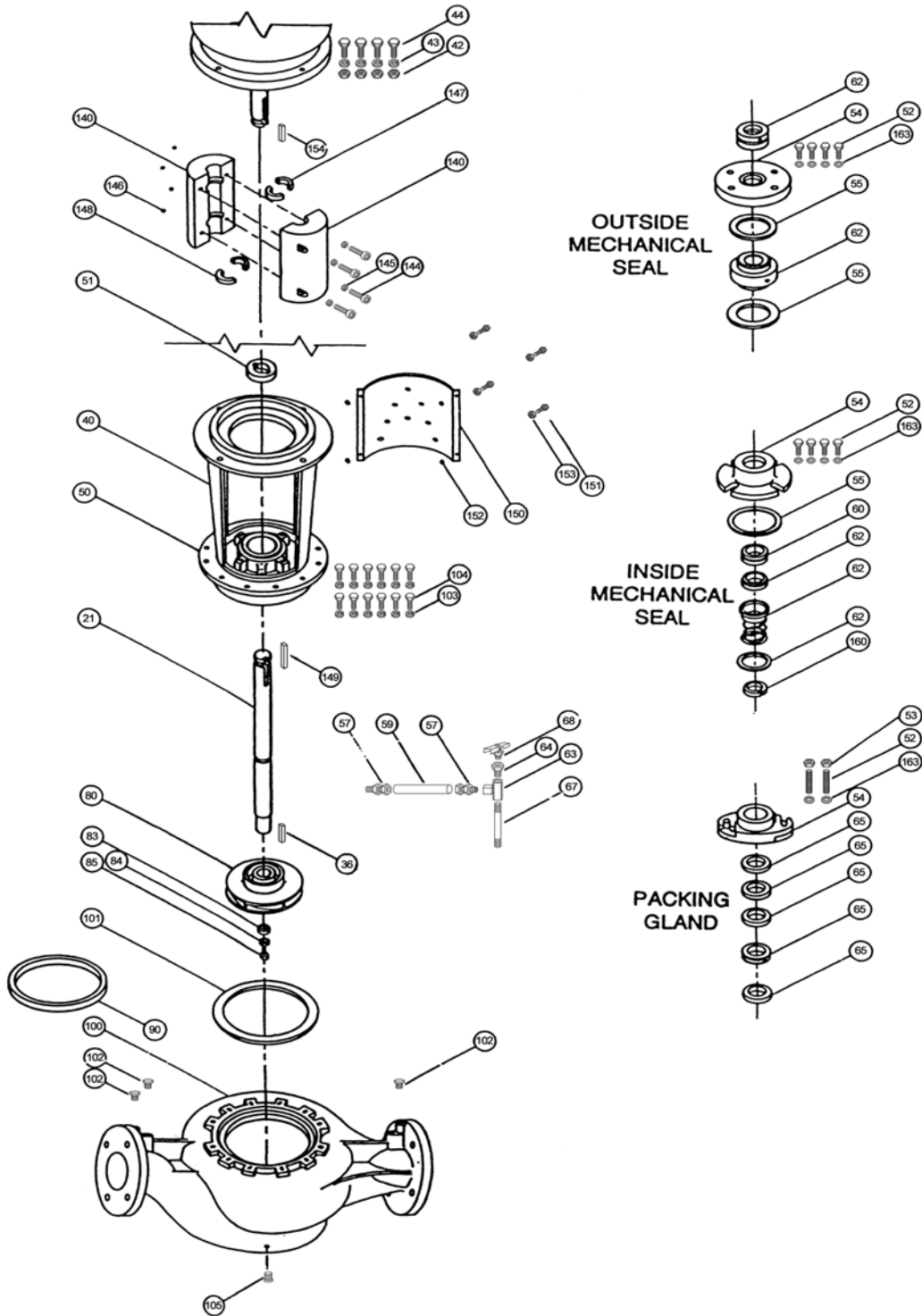
4300 GROUP NO.	1	2	4	5	6	7
SEAL SIZE AND PUMP SHAFT DIAMETER	1 1/8"	1 1/8"	1 5/8"	1 5/8"	2 1/8"	2 1/8"
IMPELLER BORE:-	7/8"	7/8"	1 1/4"	1 1/4"	1 5/8"	1 5/8"
COUPLING BORE:- MOTOR SHAFT DIA.	7/8"	1 1/8"	1 5/8"	2-1/8"	1 5/8"	2 1/8"
:- PUMP SHAFT DIA.	1 1/8"	1 1/8"	1 5/8"	1-5/8"	2 1/8"	2 1/8"

\* P-Base designation refers to motor register nominal BD diameter (10 or 16)

# MODEL 4300

## EXPLODED VIEW

GROUPS 1 & 2, - 7/8" IMPELLER BORE - 1 1/8" MECHANICAL SEAL OR PACKING GLAND



SEE PAGE 3 FOR PARTS INDEX

# PARTS INDEX

ITEM	DESCRIPTION	PAGE	ITEM	DESCRIPTION	PAGE
21	SHAFT	17	64	BUSHING	22
36	IMPELLER KEY	17	65	PACKING	21
40	ADAPTER	14	66	LANTERN RING	21
42	MOTOR CAPSCREW NUT	16	67	NIPPLE	22
43	LOCKWASHER	16	68	AIR RELEASE VALVE	22
44	MOTOR CAPSCREW	16	80	IMPELLER	6 & 7
50	STUFFING BOX	N/R	83	IMPELLER WASHER	17
51	SEAL CHAMBER BUSH.	17	86	IMPELLER CAPSCREW	17
52	OUT. SEAL COV. CAPS.	20 & 21	90	CASE WEAR RING	11 & 12
52	IN. SEAL COV. CAPS.	21	100	CASING	4 & 5
52	PACKING GLAND STUD	21	101	CASING GASKET	8
53	PACK. GLAND STUD NUT	21	102	GAUGE PLUG	17
54	OUTSIDE SEAL COVER	20 & 21	103	WASHER	9
54	INSIDE SEAL COVER	20 & 21	104	CASING CAPSCREW	9
54	SPLIT GLAND	21	105	CASING DRAIN PLUG	10
55	INSIDE SEAL CVR. GSKT.	21	140	COUPLER	18
57	MALE CONNECTOR	22	144	COUPLER CAPSCREW	17
59	TUBING	22	145	LOCKWASHER	17
60	SEAL SEAT	21	146	NUT	17
62	OUTSIDE MECH. SEAL JOHN CRANE STD.	20	147	CPLR. RING KEY (MOTOR)	19
			148	CPLR. RING KEY (PUMP)	17
62	OUTSIDE MECH. SEAL JOHN CRANE T.C.	20	149	CPLR. SQUARE KEY (PUMP)	17
			150	COUPLING GUARD	15
62	OUTSIDE MECH. SEAL DURA STD.	20	151	CPLR. GUARD BOLT	17
			152	NUT	17
62	OUTSIDE MECH. SEAL DURA T.C.	20	153	WASHER	17
			160	RETAINING RING	22
62	INSIDE MECH. SEAL HD. B.F. & A.I. CONST.	21	163	PACK. GLAND WASHER	20 & 21
			163	OUTSIDE SEAL WASHER	20 & 21
63	TEE	22	163	INSIDE SEAL WASHER	20 & 21

# VERTICAL IN-LINE - SPLIT COUPLER MODEL 4300 PUMP PARTS

EQUAL SUCTION AND DISCHARGE

GROUPS 1 & 2 - 7/8" IMPELLER BORE - 1 1/8" MECHANICAL SEAL OR PACKING GLAND

<b>ITEM 100 CASING**</b>			
PUMP SIZE	MATERIAL	PART NUMBER	BAR CODE
1 1/2X1 1/2X6	125# C.I.*	427035-011	
1 1/2X1 1/2X6	250# D.I.*	427036-031	
2X2X6	125# C.I.	427037-011	
2X2X6	250# D.I.	427038-031	
3X3X6	125# C.I.	427041-011	
3X3X6	250# D.I.	427042-031	
4X4X6	125# C.I.	427043-011	
4X4X6	250# D.I.	427044-031	
1 1/2X1 1/2X8	125# C.I.	427045-011	
1 1/2X1 1/2X8	250# D.I.	427046-031	
2X2X8	125# C.I.	427047-011	
2X2X8	250# D.I.	427048-031	
3X3X8	125# C.I.	427051-011	
3X3X8	250# D.I.	427052-031	
4X4X8	125# C.I.	427053-011	
4X4X8	250# D.I.	427054-031	
5X5X8	125# C.I.	427024-011	
5X5X8	250# D.I.	427025-031	
6X6X8	125# C.I.	427055-011	
6X6X8	250# D.I.	427056-031	

**NOTES:**

C.I.\* DENOTES CAST IRON

D.I.\* DENOTES DUCTILE IRON

\*\* CASING PART NUMBERS ARE FOR CASING ONLY, CASING WEAR RING IS SOLD SEPARATELY. IF NEW CASING IS REQUIRED, IT MUST BE ORDERED C/W WEAR RING

CASINGS CONTINUED ON PAGE 5

# VERTICAL IN-LINE - SPLIT COUPLER MODEL 4300 PUMP PARTS

EQUAL SUCTION AND DISCHARGE

GROUPS 1 & 2 - 7/8" IMPELLER BORE - 1 1/8" MECHANICAL SEAL OR PACKING GLAND

<b>ITEM 100 CASING** (cont'd)</b>			
PUMP SIZE	MATERIAL	PART NUMBER	BAR CODE
1.5X1.5X10	125# C.I.*	426257-011	
1.5X1.5X10	250# D.I.*	426258-031	
2X2X10	125# C.I.*	427059-011	
2X2X10	250# D.I.*	427060-031	
3X3X10	125# C.I.	427061-011	
3X3X10	250# D.I.	427062-031	
4X4X10	125# C.I.	427063-011	
4X4X10	250# D.I.	427064-031	
6X6X10	125# C.I.	427065-011	
6X6X10	250# D.I.	427066-031	
8X8X10	125# C.I.	427067-011	
8X8X10	250# D.I.	427068-031	
4X4X11 1/2	125# C.I.	426119-011	
4X4X11 1/2	250# D.I.	426120-031	
5X5X11 1/2	125# C.I.	426123-011	
5X5X11 1/2	250# D.I.	426124-031	
6X6X11 1/2	125# C.I.	426127-011	
6X6X11 1/2	250# D.I.	426128-031	
8X8X11 1/2	125# C.I.	426131-011	
8X8X11 1/2	250# D.I.	426132-031	

**NOTES:**

C.I.\* DENOTES CAST IRON

D.I.\* DENOTES DUCTILE IRON

\*\* CASING PART NUMBERS ARE FOR CASING ONLY, CASING WEAR RING IS SOLD SEPARATELY. IF NEW CASING IS REQUIRED, IT MUST BE ORDERED C/W WEAR RING

# VERTICAL IN-LINE - SPLIT COUPLER MODEL 4300 PUMP PARTS

EQUAL SUCTION AND DISCHARGE

GROUPS 1 & 2 - 7/8" IMPELLER BORE - 1 1/8" MECHANICAL SEAL OR PACKING GLAND

<b>ITEM 80 IMPELLER** 7/8" BORE</b>					
PUMP SIZE	MATERIAL	IMP. BORE	MAX. DIA.	PART NUMBER	BAR CODE
1 1/2X1 1/2X6	BRONZE	7/8"	6"	427099-041	
1 1/2X1 1/2X6	CAST IRON	7/8"	6"	427099-011	
2X2X6	BRONZE	7/8"	6"	427109-041	
2X2X6	CAST IRON	7/8"	6"	427109-011	
3X3X6	BRONZE	7/8"	6"	427103-041	
3X3X6	CAST IRON	7/8"	6"	427103-011	
4X4X6	BRONZE	7/8"	6"	427115-041	
4X4X6	CAST IRON	7/8"	6"	427115-011	
1 1/2X1 1/2X8	BRONZE	7/8"	8"	427119-041	
1 1/2X1 1/2X8	CAST IRON	7/8"	8"	427119-011	
2X2X8	BRONZE	7/8"	8"	427121-041	
2X2X8	CAST IRON	7/8"	8"	427121-011	
3X3X8	BRONZE	7/8"	8"	427129-041	
3X3X8	CAST IRON	7/8"	8"	427129-011	
4X4X8	BRONZE	7/8"	8"	427137-041	
4X4X8	CAST IRON	7/8"	8"	427137-011	
5X5X8	BRONZE	7/8"	8"	427131-041	
5X5X8	CAST IRON	7/8"	8"	427131-011	
6X6X8	BRONZE	7/8"	8"	427139-041	
6X6X8	CAST IRON	7/8"	8"	427139-011	

**NOTES:**  
 \*\* Impeller Part Numbers are for full or maximum diameter Impellers. Always specify Pump Serial Number and where possible, measure and advise the diameter of the Impeller being replaced on these Pumps.

**IMPELLERS CONTINUED ON PAGE 7**

# VERTICAL IN-LINE - SPLIT COUPLER MODEL 4300 PUMP PARTS

EQUAL SUCTION AND DISCHARGE

GROUPS 1 & 2 - 7/8" IMPELLER BORE - 1 1/8" MECHANICAL SEAL OR PACKING GLAND

## ITEM 80 IMPELLER\*\* 7/8" BORE (cont'd)

PUMP SIZE	MATERIAL	IMP. BORE	MAX. DIA.	PART NUMBER	BAR CODE
1.5x1.5x10	BRONZE	7/8"	10"	426255-041	
1.5x1.5x10	CAST IRON	7/8"	10"	426255-011	
2x2x10	BRONZE	7/8"	10"	427151-041	
2x2x10	CAST IRON	7/8"	10"	427151-011	
3x3x10	BRONZE	7/8"	10"	427163-041	
3x3x10	CAST IRON	7/8"	10"	427163-011	
4x4x10	BRONZE	7/8"	10"	427149-041	
4x4x10	CAST IRON	7/8"	10"	427149-011	
6x6x10	BRONZE	7/8"	10"	427153-041	
6x6x10	CAST IRON	7/8"	10"	427153-011	
8x8x10	BRONZE	7/8"	10"	427156-041	
8x8x10	CAST IRON	7/8"	10"	427156-011	
4x4x11 1/2	BRONZE	7/8"	11 1/2"	426281-041	
4x4x11 1/2	CAST IRON	7/8"	11 1/2"	426281-011	
5x5x11 1/2	BRONZE	7/8"	11 1/2"	426283-041	
5x5x11 1/2	CAST IRON	7/8"	11 1/2"	426283-011	
6x6x11 1/2	BRONZE	7/8"	11 1/2"	426290-041	
6x6x11 1/2	CAST IRON	7/8"	11 1/2"	426290-011	
8x8x11 1/2	BRONZE	7/8"	11 1/2"	426294-041	
8x8x11 1/2	CAST IRON	7/8"	11 1/2"	426294-011	

**NOTES:**

\*\* Impeller Part Numbers are for full or maximum diameter Impellers. Always specify Pump Serial Number and where possible, measure and advise the diameter of the Impeller being replaced on these Pumps.

**VERTICAL IN-LINE - SPLIT COUPLER  
MODEL 4300  
PUMP PARTS**

**EQUAL SUCTION AND DISCHARGE**

**GROUPS 1 & 2 - 7/8" IMPELLER BORE - 1 1/8" MECHANICAL SEAL OR PACKING GLAND**

<b>ITEM 101 CASING GASKET</b>			
PUMP SIZE	CONSTRUCTION	PART NUMBER	BAR CODE
1 1/2X1 1/2X6 2X2X6 3X3X6 4X4X6	ALL	426401-002	
1 1/2X1 1/2X8 2X2X8 3X3X8 4X4X8 5X5X8 6X6X8	ALL	426401-003	
1.5X1.5X10 2X2X10 3X3X10 4X4X10 6X6X10 8X8X10	ALL	426401-004	
4X4X11 1/2 5X5X11 1/2 6X6X11 1/2 8X8X11 1/2	ALL	426401-006	

**VERTICAL IN-LINE - SPLIT COUPLER  
MODEL 4300  
PUMP PARTS**

**EQUAL SUCTION AND DISCHARGE**

**GROUPS 1 & 2 - 7/8" IMPELLER BORE - 1 1/8" MECHANICAL SEAL OR PACKING GLAND**

<b>ITEM 103 CASING CAPSCREW &amp; ITEM 104 NUT</b>				
<b>PUMP SIZE</b>	<b>NUMBER REQUIRED</b>	<b>SIZE</b>	<b>PART NUMBER</b>	<b>BAR CODE</b>
1 1/2X1 1/2X6 2X2X6 3X3X6 4X4X6	12  12	CAPSCREW 1/2-13NCX1 1/4" LOCKWASHER 1/2"	911125-110  927213-100	
1 1/2X1 1/2X8 2X2X8 3X3X8 4X4X8 5X5X8 6X6X8	8  8	CAPSCREW 5/8-11NCX1 1/2" WASHER 5/8" FLAT	911129-112  927121-100	
1.5X1.5X10 2X2X10 3X3X10	12  12	CAPSCREW 5/8-11NCX1 1/2" WASHER 5/8" FLAT	911129-112  927121-100	
4X4X10	12  12	CAPSCREW 5/8-11NCX1 3/4" LOCKWASHER 5/8"	911129-114  927215-100	
6X6X10 8X8X10	12  12	CAPSCREW 5/8-11NCX1 1/2" WASHER 5/8" FLAT	911129-112  927121-100	
4X4X11 1/2 5X5X11 1/2 6X6X11 1/2 8X8X11 1/2	16  16	CAPSCREW 1/2-13NCX1 1/2" WASHER 1/2" FLAT	911125-112  927117-100	

**VERTICAL IN-LINE - SPLIT COUPLER  
MODEL 4300  
PUMP PARTS**

**EQUAL SUCTION AND DISCHARGE**

**GROUPS 1 & 2 - 7/8" IMPELLER BORE - 1 1/8" MECHANICAL SEAL OR PACKING GLAND**

<b>ITEM 105 CASING DRAIN PLUG</b>					
PUMP SIZE	MATERIAL	NO. REQ'D	SIZE	PART NUMBER	BAR CODE
1 1/2X1 1/2X6 2X2X6 3X3X6 4X4X6	CAD PLATED	1	1/4" NPT	937105-201	
1 1/2X1 1/2X8 2X2X8 3X3X8 4X4X8 6X6X8 1.5X1.5X10 2X2X10 3X3X10 4X4X10 8X8X10					
5X5X8					
6X6X10					
4X4X11 1/2					
5X5X11 1/2					
6X6X11 1/2					
8X8X11 1/2					

**VERTICAL IN-LINE - SPLIT COUPLER  
MODEL 4300  
PUMP PARTS**

**EQUAL SUCTION AND DISCHARGE**

**GROUPS 1 & 2 - 7/8" IMPELLER BORE - 1 1/8" MECHANICAL SEAL OR PACKING GLAND**

<b>ITEM 90 CASE WEAR RING</b>			
PUMP SIZE	MATERIAL	PART NUMBER	BAR CODE
1 1/2X1 1/2X6	SAE 660 BRONZE	426413-401	
1 1/2X1 1/2X6	CLASS 30 C.I.	426413-101	
2X2X6	SAE 660 BRONZE	426413-403	
2X2X6	CLASS 30 C.I.	426413-103	
3X3X6	SAE 660 BRONZE	426413-406	
3X3X6	CLASS 30 C.I.	426413-106	
4X4X6	SAE 660 BRONZE	426413-404	
4X4X6	CLASS 30 C.I.	426413-104	
1 1/2X1 1/2X8	SAE 660 BRONZE	426413-402	
1 1/2X1 1/2X8	CLASS 30 C.I.	426413-102	
2X2X8	SAE 660 BRONZE	426413-404	
2X2X8	CLASS 30 C.I.	426413-104	
3X3X8	SAE 660 BRONZE	426413-407	
3X3X8	CLASS 30 C.I.	426413-107	
4X4X8	SAE 660 BRONZE	426413-410	
4X4X8	CLASS 30 C.I.	426413-110	
5X5X8	SAE 660 BRONZE	426413-413	
5X5X8	CLASS 30 C.I.	426413-113	
6X6X8	SAE 660 BRONZE	426413-404	
6X6X8	CLASS 30 C.I.	426413-104	

**WEAR RINGS CONTINUED ON PAGE12**

**VERTICAL IN-LINE - SPLIT COUPLER  
MODEL 4300  
PUMP PARTS**

**EQUAL SUCTION AND DISCHARGE**

**GROUPS 1 & 2 - 7/8" IMPELLER BORE - 1 1/8" MECHANICAL SEAL OR PACKING GLAND**

<b>ITEM 90 CASE WEAR RING (cont'd)</b>			
PUMP SIZE	MATERIAL	PART NUMBER	BAR CODE
1.5x1.5x10	SAE 660 BRONZE	426416-402	
1.5x1.5x10	CLASS 30 C.I.	426416-102	
2x2x10	SAE 660 BRONZE	426413-404	
2x2x10	CLASS 30 C.I.	426413-104	
3x3x10	SAE 660 BRONZE	426413-404	
3x3x10	CLASS 30 C.I.	426413-104	
4x4x10	SAE 660 BRONZE	426413-408	
4x4x10	CLASS 30 C.I.	426413-108	
6x6x10	SAE 660 BRONZE	426413-412	
6x6x10	CLASS 30 C.I.	426413-112	
8x8x10	SAE 660 BRONZE	426413-414	
8x8x10	CLASS 30 C.I.	426413-114	
4x4x11 1/2	SAE 660 BRONZE	426412-405	
4x4x11 1/2	CLASS 30 C.I.	426412-105	
5x5x11 1/2	SAE 660 BRONZE	426412-411	
5x5x11 1/2	CLASS 30 C.I.	426413-111	
6x6x11 1/2	SAE 660 BRONZE	426412-420	
6x6x11 1/2	CLASS 30 C.I.	426412-120	
8x8x11 1/2	SAE 660 BRONZE	426412-421	
8x8x11 1/2	CLASS 30 C.I.	426412-121	

# VERTICAL IN-LINE - SPLIT COUPLER MODEL 4300 PUMP PARTS

EQUAL SUCTION AND DISCHARGE

GROUPS 1 & 2 - 7/8" IMPELLER BORE - 1 1/8" MECHANICAL SEAL OR PACKING GLAND

<b>ITEM 40 ADAPTER B.F. &amp; A.I. CONSTRUCTION</b>			
PUMP SIZE	MATERIAL	PART NUMBER	BAR CODE
1 1/2X1 1/2X6 2X2X6 3X3X6 4X4X6	CAST IRON	426714-011	
1 1/2X1 1/2X8 2X2X8 3X3X8 4X4X8 5X5X8 6X6X8	CAST IRON	426715-011	
1.5X1.5X10 2X2X10 3X3X10 4X4X10 6X6X10 8X8X10	CAST IRON	426717-011	
4X4X11 1/2 5X5X11 1/2 6X6X11 1/2 8X8X11 1/2	CAST IRON	426729-011	

**NOTES:**

BF\*- DENOTES BRONZE FITTED

AI - DENOTES ALL IRON

# VERTICAL IN-LINE - SPLIT COUPLER MODEL 4300 PUMP PARTS

EQUAL SUCTION AND DISCHARGE

GROUPS 1 & 2 - 7/8" IMPELLER BORE - 1 1/8" MECHANICAL SEAL OR PACKING GLAND

<b>ITEM 40 ADAPTER D.I. &amp; D.B.F. CONSTRUCTION</b>			
PUMP SIZE	CONSTRUCTION	PART NUMBER	BAR CODE
1 1/2X1 1/2X6 2X2X6 3X3X6 4X4X6	DUCTILE	426714-031	
	IRON		
1 1/2X1 1/2X8 2X2X8 3X3X8 4X4X8 5X5X8 6X6X8	DUCTILE	426715-031	
	IRON		
1.5X1.5X10 2X2X10 3X3X10 4X4X10 6X6X10 8X8X10	DUCTILE	426717-031	
	IRON		
4X4X11 1/2 5X5X11 1/2 6X6X11 1/2 8X8X11 1/2	DUCTILE	426729-031	
	IRON		

**NOTES:**

D.I. - DENOTES DUCTILE IRON

D.B.F. - DENOTES DUCTILE IRON, BRONZE FITTED

**VERTICAL IN-LINE - SPLIT COUPLER  
MODEL 4300  
PUMP PARTS**

**EQUAL SUCTION AND DISCHARGE**

**GROUPS 1 & 2 - 7/8" IMPELLER BORE - 1 1/8" MECHANICAL SEAL OR PACKING GLAND**

<b>ITEM 150 COUPLER GUARD</b>			
PUMP SIZE	NO. REQUIRED	PART NUMBER	BAR CODE
1 1/2X1 1/2X6 2X2X6 3X3X6 4X4X6	2	427270-014	
1 1/2X1 1/2X8 2X2X8 3X3X8 4X4X8 5X5X8 6X6X8	2	427270-015	
1.5X1.5X10 2X2X10 3X3X10 4X4X10 6X6X10 8X8X10	2	427270-017	
4X4X11 1/2 5X5X11 1/2 6X6X11 1/2 8X8X11 1/2	2	427270-017	

# VERTICAL IN-LINE - SPLIT COUPLER MODEL 4300 PUMP PARTS

EQUAL SUCTION AND DISCHARGE

GROUPS 1 & 2 - 7/8" IMPELLER BORE - 1 1/8" MECHANICAL SEAL OR PACKING GLAND

ITEM 44 MOTOR CAPSCREW, ITEM 42 NUT & ITEM 43 LOCKWASHER				
PUMP SIZE	NUMBER REQUIRED	SIZE	PART NUMBER	BAR CODE
1 1/2X1 1/2X6 2X2X6 3X3X6 4X4X6	4	CAPSCREW 3/8-16NCX2 1/4"	911121-118	
1 1/2X1 1/2X8 2X2X8 3X3X8 4X4X8 5X5X8 6X6X8	4	NUT 3/8-16NC	913121-100	
1.5X1.5X10 2X2X10 3X3X10 4X4X10 6X6X10 8X8X10	4	LOCKWASHER 3/8"	927211-100	
4X4X11 1/2 5X5X11 1/2 6X6X11 1/2 8X8X11 1/2	4	CAPSCREW 3/8-16NCX1 1/2"	911121-112	
	4	NUT 3/8-16NC	913121-100	
4	LOCKWASHER 3/8"	927211-100		

**VERTICAL IN-LINE - SPLIT COUPLER  
MODEL 4300  
PUMP PARTS**

**EQUAL SUCTION AND DISCHARGE**

**GROUPS 1 & 2 - 7/8" IMPELLER BORE - 1 1/8" MECHANICAL SEAL OR PACKING GLAND**

<b>COMMON PARTS, ALL CONSTRUCTIONS</b>			
ITEM NUMBER	DESCRIPTION	PART NUMBER	BAR CODE
21	1 1/8" PUMP SHAFT	426688-000	
36	IMPELLER KEY	428160-708	
51	SEAL CHAMBER BUSHING	425520-002	
83	IMPELLER WASHER	425742-001	
86	IMPELLER CAPSCREW	911900-114	
102	GAUGE PLUG ( 4 REQ'D ) 1/4"NPT. CAD PLATED	937105-201	
144	COUPLER CAPSCREW (4 REQ'D) 5/16"-18NCX2" SAE GRADE 5	911119-216	
145	LOCKWASHER (FOR ITEM 144) 4 REQ'D - 5/16"	927210-100	
146	NUT (FOR ITEM 144) 4 REQ'D - 5/16"NC	913119-200	
148	CPLR. RING KEY (PUMP SHAFT)	425513-000	
149	CPLR. KEY (PUMP SHAFT)	428161-714	
151	COUPLER GUARD BOLT 2 REQ'D - RD. HD. #8-32X3/4"	916262-116	
152	NUT (FOR ITEM 151) 2 REQ'D - #8/32	913162-116	
153	WASHER (FOR ITEM 151) 2 REQ'D - #8/32	927105-100	

**VERTICAL IN-LINE - SPLIT COUPLER  
MODEL 4300  
PUMP PARTS**

**EQUAL SUCTION AND DISCHARGE**

**GROUPS 1 & 2 - 7/8" IMPELLER BORE - 1 1/8" MECHANICAL SEAL OR PACKING GLAND**

<b>ITEM 140 COUPLER</b>				
PUMP SIZE	FRAME 143-145	FRAME 182-184	FRAME 213-215	FRAME 254-256
1 1/2X1 1/2X6	425697-000	425512-000		
2X2X6	425697-000	425512-000	425512-000	
3X3X6	425697-000	425512-000	425512-000	
4X4X6	425697-000	425512-000	425512-000	425512-000
1 1/2X1 1/2X8	425697-000	425512-000	425512-000	
2X2X8	425697-000	425512-000	425512-000	425512-000
3X3X8	425697-000	425512-000	425512-000	425512-000
4X4X8	425697-000	425512-000	425512-000	425512-000
5X5X8	425697-000	425512-000	425512-000	425512-000
6X6X8	425697-000	425512-000	425512-000	425512-000
1.5X1.5X10	425697-000	425512-000	425512-000	425512-000
2X2X10	425697-000	425512-000	425512-000	425512-000
3X3X10	425697-000	425512-000	425512-000	425512-000
4X4X10		425512-000	425512-000	425512-000
6X6X10			425512-000	425512-000
8X8X10				425512-000
4X4X11 1/2			425512-000	425512-000
5X5X11 1/2			425512-000	425512-000
6X6X11 1/2			425512-000	425512-000
8X8X11 1/2			425512-000	425512-000

<b>BAR CODES</b>		
CONSTRUCTION	PART NUMBER	BAR CODE
B.F. - A.I. - A.B.	425697-000	
B.F. - A.I. - A.B.	425512-000	

**VERTICAL IN-LINE - SPLIT COUPLER  
MODEL 4300  
PUMP PARTS**

**EQUAL SUCTION AND DISCHARGE**

**GROUPS 1 & 2 - 7/8" IMPELLER BORE - 1 1/8" MECHANICAL SEAL OR PACKING GLAND**

<b>ITEM 147 COUPLER RING KEY ( Motor Shaft )</b>				
<b>PUMP SIZE</b>	<b>FR. 143-145</b>	<b>FR. 182-184</b>	<b>FR. 213-215</b>	<b>FR. 254-256</b>
1 1/2X1 1/2X6	425698-000	425513-000		
2X2X6	425698-000	425513-000	425513-000	
3X3X6	425698-000	425513-000	425513-000	
4X4X6	425698-000	425513-000	425513-000	425513-000
1 1/2X1 1/2X8	425698-000	425513-000	425513-000	
2X2X8	425698-000	425513-000	425513-000	425513-000
3X3X8	425698-000	425513-000	425513-000	425513-000
4X4X8	425698-000	425513-000	425513-000	425513-000
5X5X8	425698-000	425513-000	425513-000	425513-000
6X6X8	425698-000	425513-000	425513-000	425513-000
1.5X1.5X10	425698-000	425513-000	425513-000	425513-000
2X2X10	425698-000	425513-000	425513-000	425513-000
3X3X10	425698-000	425513-000	425513-000	425513-000
4X4X10		425513-000	425513-000	425513-000
6X6X10			425513-000	425513-000
8X8X10				425513-000
4X4X11 1/2			425513-000	425513-000
5X5X11 1/2			425513-000	425513-000
6X6X11 1/2			425513-000	425513-000
8X8X11 1/2			425513-000	425513-000

<b>BAR CODES</b>		
<b>CONSTRUCTION</b>	<b>PART NUMBER</b>	<b>BAR CODE</b>
B.F. - A.I. - A.B.	425698-000	
B.F. - A.I. - A.B.	425513-000	

**VERTICAL IN-LINE - SPLIT COUPLER  
MODEL 4300  
PUMP PARTS**

EQUAL SUCTION AND DISCHARGE

GROUPS 1 & 2 - 7/8" IMPELLER BORE - 1 1/8" MECHANICAL SEAL OR PACKING GLAND

**PARTS FOR 1 1/8" OUTSIDE SEAL**

ITEM NO.	DESCRIPTION	CONSTRUCTION	PART NUMBER	BAR CODE
62	<b>MECHANICAL SEAL</b>			
	<b>ARMSTRONG SEAL</b> Standard 1.125 Ab2 C-SC316-V	ALL	975002-304	
	DURAMETALLIC STD.	ALL	975002-003	
	DURAMETALLIC T.C.	ALL	975002-001	
	JOHN CRANE STD.	ALL	975000-955	
	JOHN CRANE T.C.	ALL	975000-965	
52	<b>CAPSCREW - 4REQ'D</b> 3/8"-16NCX1 1/2" S/S	ALL	911121-412	
163	<b>WASHER - 4 REQ'D</b> 3/8" FLAT	ALL	927114-100	
54	<b>SEAL COVER</b>	BF - DBF	426484-002	
		AI - DI	426484-001	

**NOTES:**

BF - DBF ---- DENOTES BRONZE FITTED - DUCTILE BRONZE FITTED

AI - DI ----- DENOTES ALL IRON - DUCTILE IRON

**VERTICAL IN-LINE - SPLIT COUPLER  
MODEL 4300  
PUMP PARTS**

**EQUAL SUCTION AND DISCHARGE**

**GROUPS 1 & 2 - 7/8" IMPELLER BORE - 1 1/8" MECHANICAL SEAL OR PACKING GLAND**

<b>PARTS FOR 1 1/8" INSIDE MECH. SEAL ARRANGEMENT</b>				
ITEM NO.	DESCRIPTION	CONSTRUCTION	PART NUMBER	BAR CODE
62	MECHANICAL SEAL	ALL	810150-143	
52	CAPSCREW - 4 REQ'D 3/8" - 16NC X 1" S/S	ALL	911121-408	
163	WASHER - 4 REQ'D 3/8" FLAT	ALL	927114-100	
54	SEAL COVER	BF - DBF	426464-011	
		AI - DI	426464-001	
55	GASKET	ALL	426467-001	
160	RETAINING RING	ALL	923104-434	

<b>PARTS FOR 1 1/8" PACKED GLAND ARRANGEMENT</b>				
ITEM NO.	DESCRIPTION	CONSTRUCTION	PART NUMBER	BAR CODE
52	STUDBOLT - 2 REQ'D 3/8"-16NCX2 1/2" S/S	ALL	915221-420	
53	NUT - 2 REQ'D 3/8"-16NC S/S	ALL	913121-400	
163	WASHER - 2 REQ'D 3/8" FLAT	ALL	927113-100	
54	SPLIT GLAND	ALL	426461-011	
65	PACKING - 2 REQ'D 1 1/8"X3/8" JC #1340	ALL	913121-400	
66	LANTERN RING	ALL	426451-001	

**NOTES:**

BF - DBF ---- DENOTES BRONZE FITTED - DUCTILE BRONZE FITTED

AI - DI ----- DENOTES ALL IRON - DUCTILE IRON

# VERTICAL IN-LINE - SPLIT COUPLER MODEL 4300 PUMP PARTS

**EQUAL SUCTION AND DISCHARGE**

**GROUPS 1 & 2 - 7/8" IMPELLER BORE - 1 1/8" MECHANICAL SEAL OR PACKING GLAND**

<b>COMMON PARTS FOR OUTSIDE AND INSIDE SEAL ARRANGEMENTS</b>				
<b>ITEM NO.</b>	<b>DESCRIPTION</b>	<b>CONSTRUCTION</b>	<b>PART NUMBER</b>	<b>BAR CODE</b>
57/58	MALE CONNECTOR	BF - DBF	93900-114	
	3/8" TUBE X 1/4"NPT	AI - DI	93900-214	
59	TUBING 12" REQUIRED	BF - DBF	997531-004	
	3/8"OD X .035 WALL	AI - DI	997153-004	
63	TEE	BF - DBF	935101-001	
	1/4" NPT	AI - DI	931101-101	
64	BUSHING	BF - DBF	935123-050	
	1/4" X 1/8" NPT	AI - DI	931123-150	
67	NIPPLE	BF - DBF	938103-001	
	1/4" X 2 1/2"	AI - DI	938003-101	
68	AIR RELEASE VALVE	BF - DBF	939018-101	
		AI - DI	218644-000	

**NOTES:**

**BF - DBF ---- DENOTES BRONZE FITTED - DUCTILE BRONZE FITTED**

**AI - DI ----- DENOTES ALL IRON - DUCTILE IRON**