

**SERVICE WORK INSTRUCTIONS**

# Series 4300 Vertical In-Line Pump

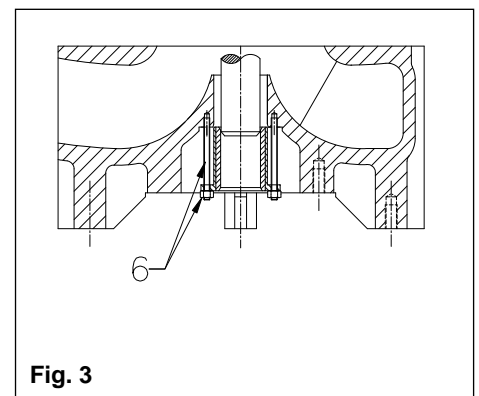
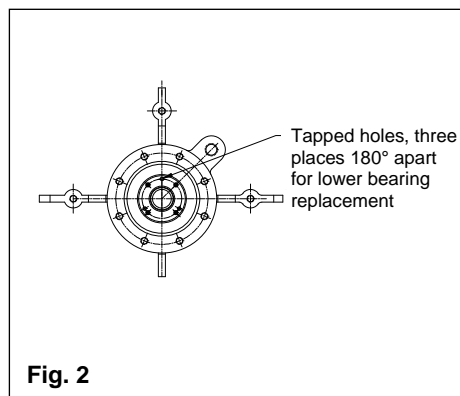
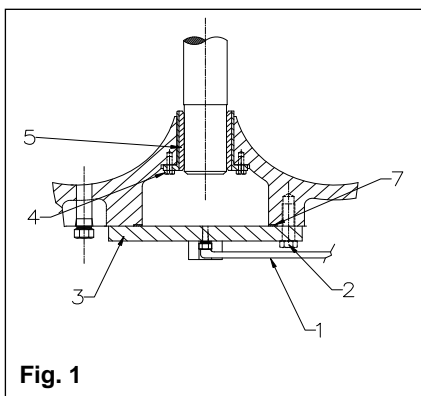
## Port Sizes: 16" x 16"

**LOWER BEARING REPLACEMENT PROCEDURE:**

1. Stop the pump. Lock off the breaker. Isolate and drain the pump.
2. Remove lower bearing flush line (1) from the bottom of casing.
3. Remove the eight bolts (2) from the lower bearing cover (3) and remove the cover and gasket.
4. Check clearance between shaft and bearing. If 0.015" (0.38 mm) or greater the bearing should be replaced.
5. Remove the four bolts (4) from lower bearing (5) and relocate three of them into the tapped holes on lower bearing flange.
6. Tightening three bolts in sequence slowly and evenly, jacking out the lower bearing. Bearing-puller or longer bolts (see item 8) can be used to complete the removal of the bearing.
7. Ensure mating bore on casing, between casing and lower bearing, is clean.
8. Insert new lower bearing into the casing bore. Use two studs 3/8-16 x 5" long with nuts (6) 180° apart to install lower bearing into the casing bore. Tightening stud nuts (6) slowly and evenly, lower bearing will slide into the casing bore (Fig. 3).
9. When lower bearing (5) is close to being fully installed, replace long studs (6) by bolts (4) and complete the installation.
10. Install new gasket (7) if necessary and place lower bearing cover (3).
11. Tighten all eight bolts (2) evenly and equally and re-install flush line (1).

**REPLACEMENT PART NUMBERS:**

1. Lower bearing for 16x16x15 – 427494-000
2. Lower bearing for 16x16x19 – 427524-000
3. Gasket - 426401-003



S. A. Armstrong Limited  
23 Bertrand Avenue  
Toronto, Ontario  
Canada, M1L 2P3  
T: (416) 755-2291  
F (Main): (416) 759-9101

Armstrong Pumps Inc.  
93 East Avenue  
North Tonawanda, New York  
U.S.A. 14120-6594  
T: (716) 693-8813  
F: (716) 693-8970

Armstrong Holden Brooke Pullen  
Wenlock Way  
Manchester  
United Kingdom, M12 5JL  
T: +44 (0) 161 223 2223  
F: +44 (0) 161 220 9660



© S.A. Armstrong Limited 2009